

TROPICALDISPATCH

JANUARY - APRIL 2014

INSIDE:

**People and "Their" Gardens at Selby
Bringing the Outdoors In
Uncovering a Local Botanical Mystery
What's a Family to Do?**



BOARD OF TRUSTEES

Cathy Layton, *Chair*
 Emily Walsh, *Vice Chair*
 Dr. Kelvin Cooper, *Secretary*
 Sandy Rederer, *Treasurer*
 Christopher N. Romine, *Immediate Past Chair*
 J. Allison Archbold, Esq
 Stephen Hazeltine
 Nora Johnson
 Thomas B. Luzier, Esq
 Alice Rau
 Wayne Rollins
 Michael Saunders
 Arthur M. Wood, Jr
 Carlyle Luer, MD, *Trustee Emeritus*
 Carmen Baskind, *Associates President (ex-Officio)*
 Thomas Buchter, *CEO and President*

MISSION

To provide an oasis of inspiration and tranquility, while furthering the understanding and appreciation of plants, especially epiphytes.

VISION

To touch as many people as possible through our urban waterfront garden that is the world leader in conservation and display of epiphytes. Visitors and volunteers alike experience the Gardens' beauty, gaining a better understanding and greater appreciation of the natural world.

PROGRAM SPONSORS

Selby Gardens programs are sponsored in part by the State of Florida, Department of State, Division of Cultural Affairs, the Florida Council on Arts and Culture, and are paid for in part by Sarasota County Tourist Development Tax Revenue



ADDRESS CHANGES

Mail: Membership
 Marie Selby Botanical Gardens
 811 South Palm Avenue, Sarasota, FL 34236
Email: membership@selby.org
Phone: (941) 366-5731, ext. 231

Tropical Dispatch ©2013 Marie Selby Botanical Gardens
 Produced By Carlson Studio Marketing,
 Gulfshore Media and The Versatility Group

Cover: Ann Goldstein Children's Rainforest Garden (which opened last November) is having a desired effect: children and their families are finding even more reasons to put Selby Gardens on their must-do lists. Photo by Kathleen Kinney



A Message from the CEO

Marie Selby's garden is not only an urban, bayfront oasis, but a world leader in the study and conservation of tropical plants, especially epiphytes.

It's impossible to protect what we do not know and understand. Selby Gardens is dedicated to conservation through research and education. Tropical rainforests are home to half the world's known plant and animal species. Yet these habitats are threatened and the plants that live there, endangered. Since 1975, scientists from Marie Selby Botanical Gardens have ventured into some of the wildest places on the planet to study and learn from these resourceful, remarkable plants.

As a result we've developed a rich body of knowledge to share with present and future generations. The Ann Goldstein Children's Rainforest Garden will facilitate those efforts. The new garden, and the gardens as a whole, showcases what we've learned and how humans benefit from better understanding of plants. Here children and their families will learn about the interconnectivity between plants and people. Through self-directed exploration and interactive play, we are cultivating future champions for the environment.

Being a nonprofit institution our work is made possible through the generosity of others, beginning with Marie Selby's legacy. We are grateful for the numerous community donations of support we have received in the past and more recently for the children's rainforest garden. As sources of funding continue to shrink, like the plants we study, our survival depends on our resourcefulness. Collaborations and partnerships are an invaluable way to share knowledge as well as advance our mission. Just as plants in the wild have adapted to an ever changing environment, we know we must constantly seek common ground and find ways to work cooperatively. Selby Gardens looks forward to continuing to partner with any individual or group serious about plant conservation so that every child might have a place where they can learn to make a difference.

Cordially,

Thomas Buchter, CEO, Marie Selby Botanical Gardens

Hours & Admissions

Garden Hours	The Gardens are open 10:00 AM – 5:00 PM every day except Christmas Day. Please check the website for special event and weather closings.
Admission	Members Free, Adults \$19, Children 4-11 \$6, 3 & under free
Find Us Online	www.selby.org Facebook - facebook.com/selbygardens Twitter - twitter.com/selbygardens Google + - plus.ly/selbygardens

News from the Gardens



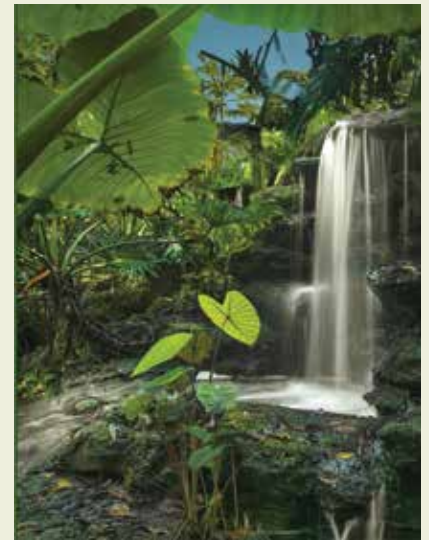
The Gift of Quality Time

The amazing adventures and memories of family time fun and learning in Ann Goldstein's Children's Rainforest Garden don't have to end when the visit to the Gardens does. Bring home the gift of the quality time spent together with a rainforest treasure from the Garden Shop. Choose from attire, water bottles, magnets and other fun items. Stop in the Garden Shop to see all the new spring merchandise.

Call for Entries

With this year's theme being "Focus on the Tropics," Selby Gardens announces a call for entries the 2014 Annual Juried Photographic Exhibition. Cash prizes will be distributed among the "Best of Show" as well as First, Second and Third Place for each of five categories: Selby Gardens, Plant Life, Scenic, Animal Life, and Black & White.

This year's exhibition represents the 34th anniversary for this popular competition with work submitted from across the state and even some out-of-state entries. Photographers may download an entry form from www.Selby.org. Hand-delivered photographs will be accepted on Monday, April 21 from 1:00 p.m. to 6:00 p.m. in the Museum of Botany and the Arts at Selby Gardens on South Palm Avenue. Mailed entries must be received by April 14, 2014. Mail to: 811 South Palm Avenue, Sarasota, Florida 34236. All accepted entries and prize winners will be announced at Selby.org.



A New *Selbyana* Rolls off the Presses

A special issue of *Selbyana*, the peer-reviewed journal of Marie Selby Botanical Gardens, was made available at the first of the year and includes the proceedings from the 2010 World Gesneriad Research Conference (WGRC 2010). Held in mid-October, 2010 at Marie Selby Botanical Gardens, the Conference was an international meeting designed to bring together the world's Gesneriaceae researchers, students, and lay enthusiasts. The specific objectives of the conference were to promote the understanding and knowledge of the plant family Gesneriaceae, provide opportunities for new researchers and students of the family to enter into working groups, formalize international collaborations, explore opportunities to create a web-based Gesneriaceae coalition, and summarize the current state of knowledge on Gesneriaceae phylogenetics. The journal has been in production since 1975 (the year Selby Gardens opened) and contains research from Selby Gardens' botany staff members and other scientists. Write to selbyana@selby.org for subscription and back issue information.



Bringing Outdoor Orchids Inside



Southwest Florida's hot, humid climate is ideal for growing orchids such as Vanda and Dendrobiums outside year round. Outdoors can be as small as a screened-in lanai or as big as a backyard. Either way, it IS possible to bring the beauty of a blooming orchid indoors for all to enjoy.

Here are a few varieties of orchids that do well outside in the climate of this region along with some gardening advice to care for and maintain them while enjoying their blooms indoors. The larger and more diverse the orchid collection, the more opportunities there are to rotate blooming plants indoors for display.

Phalaenopsis is a flexible orchid variety that can endure less-than-perfect growing conditions.

A large and diverse genus, **Dendrobium** is popular because of the ease of culture and prolific flowering habits with blossoms that typically last 3-4 weeks.

Considered fairly rugged, **Oncidiums** are easy to grow even in adverse growing conditions.

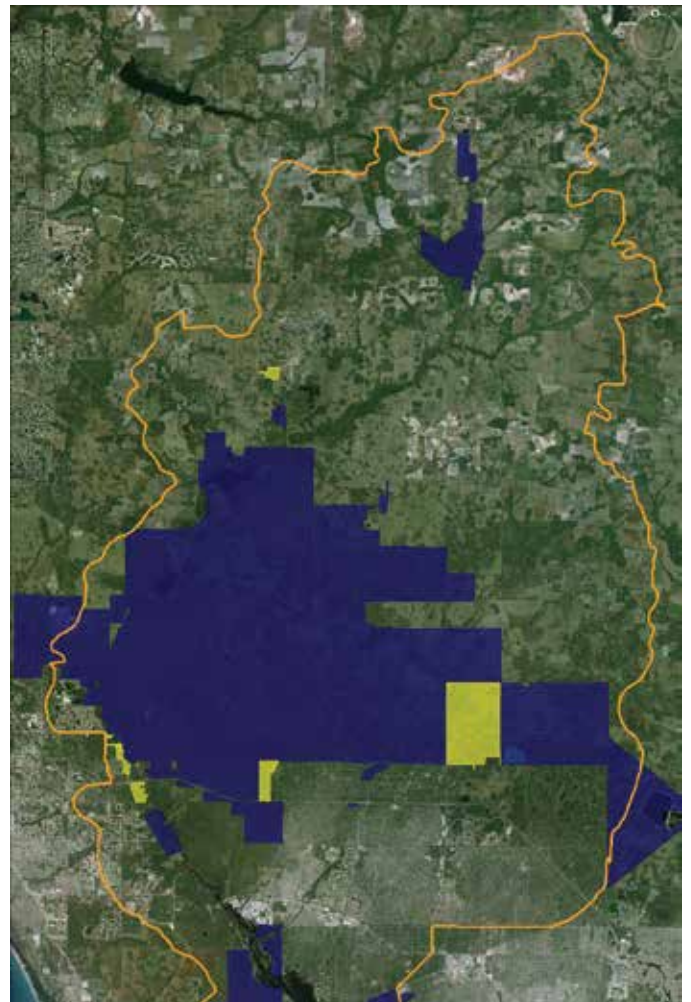
The **Vanda's** bloom spikes are sturdy and most frequently appear during the warmest months. Its flowers can last three weeks or more, depending upon conditions.

Among the easiest and most prolific orchids (seen growing natively on tree branches in Florida), **Encyclia** produces delicate flowers on long stems plentiful throughout most of the year.



Light, temperature, humidity, watering tendencies, and fertilization all play a role in keeping orchids alive while indoors. The single most important variable when bringing an outdoor, blooming orchid indoors may be moisture. This is critical because overwatering OR underwatering can ultimately contribute to the plant's demise. Since the objective is to keep the plant alive long enough to return it to nature so it propagates new flowers, misting may be a more apt method of hydrating an indoor orchid that's in bloom.

How frequently orchids are watered while indoors depends on several variables. For reference, there are a variety of plant care guides available at www.selby.org/learningandgrowing/plant_library. Selby Gardens frequently offers classes about care and maintenance of orchids. Also friendly horticulture staff members are happy to answer questions when they are on duty. First perform some basic research and then be rewarded by bringing the outdoors inside!



Myakka Island

A Mystery Waiting for Scientific Exploration and Discovery

One of the last remaining wilderness expanses in Southwest Florida containing a natural ecosystem exists at the eastern edges of Sarasota and Manatee counties (and slightly in DeSoto, Hardee, and Charlotte counties).

From satellite images (as displayed here), the Myakka Island (or Myakka River Basin) appears as an emerald oasis. Overall, the island is made up of more than 375,000 acres, of which about 30%, or 111,960 acres, are currently protected from development (shaded in purple and yellow). Only a fraction of that has ever been subject to scientific observation and documentation. This is significant because it's impossible to know the impacts that future nearby development might have on threatened or endangered species – not only plants, but animals also. As the foundation for all life, healthy botanical biodiversity is essential.

Of the area where plant inventories have been conducted, botanists with Marie Selby Botanical Gardens have studied approximately 5,000 acres (yellow shading). “Within this relatively small area, we have documented nearly 800 plant species, including 65 not previously known to occur in the various counties that make up the island,” remarked Bruce Holst, Selby Gardens’ director of botany. “This data is invaluable to helping land managers improve management practices and enhance biodiversity. Imagine what we’ll find when we inventory the remaining areas!”

For additional information on this important field work and how to support it, contact bholst@selby.org or call 941-366-5731, ext. 312.



Rainforest Mask

10-Year Anniversary & Cultural Heri

Centuries ago when the natives of Boruca, Costa Rica needed a way to protect themselves against invading conquistadors, they turned to their native environment for help. Balsa and cedar trees were abundant. So they began carving ornate, menacing masks with malevolent spirits, known as Diablitos, to scare away any would-be conquerors.

The March 7 opening will also mark the 10th anniversary of this enormously popular exhibition. Visitors to Selby Gardens' Museum of Botany & the Arts will be astounded by the newest collection of hand carved masks from these talented Costa Rican craftsmen – and can even take them home! This year's exhibit and sale boasts a collection of more than 300 brightly colored and fanciful masks that reflect the native flora and fauna of the Central American island, as well as the evil spirit masks. A preview reception will be held Thursday, March 6 from 5:30 pm to 7:30 pm.

Many of the artists are descended from the original mask carver families. In the years since the annual



tradition began at Selby, a wonderful cross cultural exchange has been fostered. The Borucan villagers have become extended family to the Gardens and vice versa. As a result of the interplay, Selby's botany team is conducting exploratory discussions with tribal chiefs and Costa Rican university officials about future plant inventories and expeditions. Proceeds from the mask sales provide valuable financial support to the village and support the Gardens' mission and scientific work.



Masks of Costa Rica

Stage Celebration March 7 – April 18



More ways to learn about these fascinating and gifted artists, their culture and region

Meet the Artists

March 8, 9, 15 & 16 1PM – 3PM

A unique opportunity to meet the Borucans, observe their artistic ability and experience the passion for nature conveyed in their work. A Spanish translator will be present to help with questions and answers.

Every Mask Tells a Story

March 12 12PM – 1PM

Discover how the masks reveal each artist's distinctive personality while preserving their profound respect for the culture and community they share.

Create Your Own Rainforest Mask

March 13 10AM – 2PM

Paint an authentic rainforest mask alongside Borucan artists to commemorate 10 years of rainforest art. What vibrant colors will you select to capture your inner "devil"?

For more information and to register visit www.selby.org.

Calling All Families!

Anyone who believes it is important for adults and children to enjoy regular experiences in the natural world needs to check out the playful new space dedicated to building connections between people and plants at Selby Gardens.

The Ann Goldstein Children's Rainforest Garden is garnering attention and accolades since opening last November. Indeed, national arts and cultural leaders



are scheduled to appear in the children's rainforest. In January acclaimed children's author Lynne Cherry (*The Great Kapok Tree*) is offering two programs as part of an expanded family program series, Rainforest Friends.

International dance phenomenon Sidiki Conde (*You Don't Need Feet to Dance*) of Guinea, West Africa, will bring his inspiring, motivational message in March.

Generous financial support from Community Foundation of Sarasota County, First Watch, Koski Family Foundation and Woman's Exchange, Inc., has made it possible for Selby Gardens to enrich its offerings of popular family-friendly programs. Little Sprouts' Club, for preschoolers, will expand from once to three times a month beginning in



January. The newest initiative, Rainforest Friends, will be held monthly on Saturdays through June for children ages 3-11. Participation may be limited. For programs requiring registration, email education@selby.org or call (941) 366-5731, ext. 239. Visit www.Selby.org for a complete schedule, details on these talented educator/performers and the programs they will present.

Rainforest Friends

For families SATURDAY JANUARY 25 • 1 PM

Kids Making a Difference through Books & Films

A Selby Gardens exclusive PREMIERE! Chalk Talk with Lynne Cherry, author of the "Great Kapok Tree," in the children's rainforest. Registration required.

For teens SATURDAY JANUARY 25 • 3:30-5 PM

Young Voices for the Planet

Lynne hosts a special screening in Selby's Great Room by the Bay of "Young Voices for the Planet," a film that depicts eight inspiring stories of young people making a difference for the environment. Registration required.

SATURDAY FEBRUARY 15 • 1 PM

Project Rainforest

Conservationist Bruce Segal leads youngsters on a rainforest expedition. Registration required.

SATURDAY MARCH 29 • 1 PM

You Don't Need Feet to Dance

Sidiki Conde, a dancer, drummer, and singer from Guinea, West Africa, who despite losing the use of his legs when he was 14, followed his dream to become a dancer. Registration required.

SATURDAY APRIL 19 • 1 PM

Music of the Forest with Stephanie Heideman

Music is a language the whole world speaks! A stunning performance from a graceful and talented educator/performer. Registration required.

Little Sprouts' Club: The Rainforest from A to Z

A favorite time for children to interact with their favorite adults in the great outdoors!

Tuesday 1/7 Wednesday 1/8 Saturday 1/11
10:30-11:30 a.m.

Tuesday 2/4 Wednesday 2/5 Saturday 2/8
10:30-11:30 a.m.

Tuesday 3/4 Wednesday 3/5 Saturday 3/8
10:30-11:30 a.m.

Tuesday 4/1 Wednesday 4/2 Saturday 4/5
10:30-11:30 a.m.

Community Classes

January to April 2014

Class Registration Policies:

Register online at www.selby.org or in person at Selby's Welcome Center.

In the event that a class is cancelled by Selby Gardens, students will receive a full refund. Student cancellations made less than 72 hours prior to class time will not be entitled to a refund nor class credit.

Please visit our website for updates and additional information.

Class sizes are limited - please register early.

Material lists are available online and can be emailed or mailed upon request.

Pre-Registration is required. Tuition is due with registration. Pay online or use charge, check or cash in our Welcome Center.

Registration fees are not prorated. If you do not attend any portion of the class, your registration fee is forfeited.

There are no make-up classes for students who miss a regular class session.

Proceeds from classes support the Gardens.

ART CLASSES

Intermediate Watercolor

Session I: Jan 7, 14 & 21

Session II: Feb 4, 11 & 18

Session III: Mar 11, 18 & 25

Session IV: Apr 1, 8 & 15

Tuesdays, 10:00 am – 2:00 pm

Each 3-class session focuses on demonstrations and a variety of watercolor techniques. Students with previous experience will feel free to experiment, create their own compositions, or paint along with the instructor.

*Instructor: Carolyn Merenda
Member, \$85; Non-member, \$105*

Advanced Watercolor

Session I: Jan 9, 16 & 23

Session II: Feb 6, 13 & 20

Session III: Mar 6, 13 & 20

Session IV: Apr 3, 10 & 17

Thursdays, 10:00 am – 2:00 pm

Refine techniques using instructor-provided reference or work on subjects of individual choice. Class critiques will provide stimulus for growth. This course is for the more experienced painter.

*Instructor: Carolyn Merenda
Member, \$85; Non-member, \$105*

Painting Beautiful Botanicals in Watercolor

Jan 11

10:00 am – 5:00 pm

This one-day introduction to watercolor in the French Court Tradition also offers a glimpse into the fascinating history of botanical art. New and advanced students will benefit from reinforcing instructor's advice and lessons learned in class with Ms. Braid's "Ten Steps..." book series. Beginners welcome. Students may pursue a Certificate in Botanical Art if desired.

*Instructor: Olivia Braid
Member, \$95; Non-member, \$120
Materials Fee: \$25 (pay instructor)*

Beautiful Botanicals Workshops

Session I: Jan 13, 14 & 15

Session II: Feb 10, 11 & 12

Session III: Mar 17, 18 & 19

Session IV: Apr 28, 29, 30, May 1 & 2

12:00 pm – 5:00 pm each day

Discover enthralling detail of Botanical Art! By concentrating on one subject to develop drawing and/or watercolor skills in the style of the French Court, students will gain an understanding of the importance of Gesture and Contour, and explore the Five Elements of Geometric Form. Reinforce techniques learned in class by taking home Ms. Braid's "Ten Steps..." book series. Beginners welcome. Students may pursue a Certificate in Botanical Art if desired.

*Instructor: Olivia Braid
3-day Sessions: Member, \$350; Non-member, \$375
Materials Fee: \$25 (pay instructor)
5-day Session: Member, \$480; Non-member, \$495
Materials Fee: \$25 (pay instructor)*

Print the Gardens

Session I: Jan 16 & 17

Session II: Apr 2 & 3

10:00 am – 3:00 pm each session

Selby Gardens' plants inspire one-of-a-kind nature print designs. Day One focuses on the technique of transferring leaf and flower images onto both paper and fabric to create natural art on clothing, and linens, etc. Day Two, students create note cards and small botanical prints. No previous experience necessary.

*Instructor: JoAnn Migliore Campisi
Member, \$70; Non-member, \$85
Materials Fee: \$10 (pay instructor)*



Zen Watercolor Workshops

Paint Selby's botanical "gems" using Deborah Ross' fun and loose Zen-style painting techniques. Both novice and experienced students will become "enlightened" while capturing Selby's beautiful orchids, birds, butterflies and more. Register for one or more workshops.

Instructor: Deborah Ross

2-Day Workshops:

Jan 21 & 22, 10:00 am – 1:00 pm

Mar 26 & 27, 10:00 am – 1:00 pm

Member, \$100; Non-member, \$120

1-Evening Workshops:

Jan 22, 5:00 pm – 8:00 pm

Mar 27, 5:00 pm – 8:00 pm

Member, \$50; Non-member, \$60

1-Day Workshops:

Jan 23, 10:00 am – 1:00 pm

Mar 28, 10:00 am – 1:00 pm

Member, \$50; Non-member, \$60

Stained Glass

Jan 29, 30, Feb 5 & 6, 10:00 am – 1:00 pm

Selby Garden plants are the inspiration for making stained glass using copper foil technique. Students can design their own or use the instructor's designs to create two projects in this inspiring, creative 4-week workshop. Tools and most supplies will be provided.

*Instructor: Alice Sciarrino
Member, \$95; Non-member, \$115
Materials Fee: \$20 (pay instructor)*

Drawing Beautiful Botanicals

Session I: Feb 8

Session II: Apr 26

10:00 am – 5:00 pm

Plant images date back over 20,000 years and record our civilization. This workshop will focus on this rich history while students draw a live plant found in the Gardens. Advanced and beginning students interested in developing this art form will receive invaluable advice. Students can practice techniques from this class using Ms. Braid's "Ten Steps..." book series. Students may pursue a Certificate in Botanical Art if desired.

*Instructor: Olivia Braid
Member, \$95; Non-member, \$120
Materials Fee: \$20 (pay instructor)*

New! Hand Printed Botanical Journal

Feb 19 & 20, 10:00 am – 2:00 pm

Learn the simple art of bookmaking by folding and stitching hand-painted and nature-printed papers into a very personal and unique botanical journal. Explore direct and indirect methods of printing botanicals and create delicate color washes on paper. All skill levels welcome.

*Instructor: Sandy Frick
Member, \$65; Non-member, \$80
Materials Fee: \$20 (pay instructor)*

Beginners' Only Watercolor

Feb 25 & Mar 4

Tue, 10:00 am – 2:00 pm

Beginning watercolor students will move from inexperienced to being comfortable with the basic tools and techniques of this medium. Students will learn color mixing, creating a basic palette, brush techniques, perspective and more.

Instructor: Carolyn Merenda Member, \$65; Non-member, \$85

New! Fabulous Brushstroke Flowers

Feb 26 & 27, 10:00 am – 3:00 pm

Paint beautiful flowers with Asian and Western flair in watercolor and sumi ink. Learn from master brush-stroke painter Frederica Marshall how to capture the energy and character of different flowers, learn their symbolic meanings, and enjoy the stream of wind off the tip of the brush. Class is for all levels, beginner to experienced. Art materials supplied.

Instructor: Frederica Marshall Member, \$140; Non-member, \$155



Borucan Mask Painting

Mar 13, 10:00 am – 2:00 pm

Celebrate the mask-making traditions of the Borucan Indians of Costa Rica by painting along with a visiting native artist. Learn design techniques and take home an authentic rainforest-inspired mask.

Instructor: Marilyn Shelley Member, \$40; Non-member, \$55 Materials Fee: \$25 - \$40 per mask

Ikebana: Traditional vs. Art Deco

Apr 2, 10:00 am – 1:00 pm

Explore the Japanese Art of Ikebana by creating two beautiful and unique arrangements: a traditional Ikebana design based on the structural triad of heaven, man and earth and an Art Deco-inspired arrangement, suitable for a modern home. All materials are included; students need only bring floral clippers and scissors.

Instructors: Pat Bonarek and Adrienne Wagner Member, \$35; Non-member, \$45 Materials fee: \$35 (pay to instructor)

Nature's Impressions in Clay

Apr 7 & 8, 10:00 am – 2:00 pm

Create beautiful nature impressions by pressing leaves, feathers and other natural objects into clay slabs. These oven cured tiles will then be painted and arranged into a finished wall mosaic.

Instructor: Sandy Frick Member, \$65; Non-member, \$80 Materials Fee: \$20 (pay instructor)

Ikebana: Morimono

Apr 9, 10:00 am – 1:00 pm

Create a three-dimensional, nature-inspired arrangement from fruits, vegetables, leaves, roots, and branches. Learn the importance of balancing the materials with line, mass and color. All materials are included; students need only bring floral clippers and scissors.

Instructors: Pat Bonarek and Adrienne Wagner Member, \$35; Non-member, \$45 Materials fee: \$25 (pay to instructor)

New! The Art of Selby's Rainforest

Apr 18, 10:00 am – 2:00 pm

Let Selby's Tropical Conservatory become your muse – the display house is brimming with colorful, exotic rainforest plants! Once classroom instruction begins, you'll be guided through oil pastel techniques to create your own mini-masterpiece. Designed for all abilities, all that's required is interest and enthusiasm!

Instructor: Karen J. Schunk Member, \$35; Non-member, \$50



HEALTH & DISCOVERY

New! Winter Yoga Pass

Valid Jan 6 through Apr 28, 2014

Due to popular demand, a Winter Yoga Pass offers the freedom of attending 8 sessions at student's convenience from January through April at a significant savings. See Yoga in the Gardens for complete description and valid dates.

Instructor: Nancy Zampella Member, \$100; Non-member, \$140

Yoga in the Gardens

Session I: Jan 6, 13, 20 & 27

Session II: Feb 3, 10, 17 & 24

Session III: Mar 3, 10, 17 & 24

Session IV: Apr 7, 14, 21 & 28

9:00 am – 10:00 am

Treat yourself to a peaceful mind/body Yoga experience in a beautiful Garden or indoor setting. This class, for beginners and advanced students, focuses on alignment, breathing techniques and relaxation.

Instructor: Nancy Zampella Member, \$55; Non-member, \$75



New! Rainforest Tea Tasting

Session I: Jan 27

Session II: Mar 10

Mon, 10:00 am – 11:30 am

Partake in a tea tasting featuring teas infused with tropical flavors that celebrate our local treasures. Experience a new tea commemorating the opening of the new children's rainforest at Selby. Learn techniques to brewing your favorites at home.

Instructor: Glynis Chapman Member, \$25; Non-member, \$35

New! Entertaining Tropical Style

Mar 24, 11:30 am – 2:00 pm

LOCATION: Mattison's Forty-one, 7275 S Tamiami Trail

Partake in a delicious three-course luncheon created by Executive Chef Paul Mattison. Menu will consist of items demonstrated in laid-back class setting with wine pairings. Chef Mattison will share gourmet recipes and tips on easy entertaining inspired by the Tropics and answer culinary questions during class. Students will take home a recipe packet of the items demonstrated. Cash bar available. Early reservations are recommended as seating is limited.

Instructor: Executive Chef Paul Mattison Member, \$45; Non-member, \$55

New! Learn to Love Yoga Props

Mar 31, 9:00 am – 10:00 am

Practicing yoga without props is like eating peas with a knife. Just because you can, why would you want to? Learn how blocks, bolsters, straps and blankets translate to more fun and creativity. Bring props from home and discover how to experience greater range of motion with every asana.

*Instructor: Nancy Zampella
Member, \$20; Non-member, \$35*

New! Rainforest-Inspired Writing Retreat

Apr 5, 1:00 pm – 5:00 pm

Let the beauty of the Gardens and cultural symbolism of rainforest mask artists of Boruca, Costa Rica inspire you. Writer/Biologist Susan Blake and Journalist/Meditation Instructor Gail Condrick will offer creative writing exercises, nature walks, and guided meditations. This retreat is for those who want to be more creative writing a journal, poetry, a memoir, or fiction or non-fiction. No prior writing experience required.

*Instructors: Gail Condrick and Susan Blake -Gonzalez
Member, \$50; Non-member, \$60*

HORTICULTURE

Potting & Mounting Orchids

Jan 28 or Mar 25

11:00 am – 1:00 pm each session

Give your treasured orchid a new lease on life! Selby's experienced greenhouse manager will help you re-pot your orchid for an additional fee.

*Instructor: Angel Lara
Member, \$35; Non-member, \$45
Potting Fee: \$10 average, depending on size of plant.*

New! Rain Gardens

Feb 1, 10:00 am – 12:00 pm

What is a rain garden and why and where would you plant one? Learn from wildlife biologist, ecologist and owner of Florida Native Plants, Inc. how to minimize water use in your landscapes, how to redirect rain water to create new gardening opportunities, and how to limit storm water runoff into the Gulf. Helpful handouts and plant lists will be provided.

*Instructor: Laurel Schiller
Member, \$35; Non-member, \$45*

Growing Orchids in SW Florida

Feb 7, 10:00 am – 12:00 pm

Orchid enthusiasts with some experience will acquire information on how to grow many of Florida's native orchids and learn about orchids best suited for this area. A tour of the orchids growing in the Tropical Conservatory is included.

*Instructor: Monroe Kokin
Member, \$35; Non-member, \$45*

Bromeliads for Beginners

Feb 15, 10:00 am – 12:00 pm

Discover the beauty and unique qualities of 'Bromeliaceae' – a diverse and interesting plant family. Through discussion, visuals and examples, students will learn about the types of bromeliads, how to grow them, and how to start a bromeliad collection.

*Instructor: Maureen McCracken
Member, \$35; Non-member, \$45*



Orchids 101

Apr 4, 10:00 am – 12:00 pm

Orchid novices will be surprised at how easy orchid growing can be! Orchids will be demystified through insightful instruction, a power-point presentation and a tour of orchids in the Tropical Conservatory.

*Instructor: Monroe Kokin
Member, \$35; Non-member, \$45*

Container Gardening

Apr 12, 10:00 am – 12:00 pm

Add beauty and color to your lanai or patio without frying expensive plants in the Florida sun. Demos and step-by-step instructions will reveal how to create potted masterpieces, exploding with colors and textures using plants that thrive in Florida.

*Instructor: Maureen McCracken
Member, \$35; Non-member, \$45*

PHOTOGRAPHY

Picasa Workshop

Jan 29, 10:00 am – 1:30 pm

Immediately start to organize, edit and present your images using a free download program. Class includes a lecture, outline and demonstrations. Basic computer skills desirable.

*Instructor: Bob Fink
Member, \$35; Non-member, \$50*

Exposed: Behind-the-Scenes

Photography

Session I: Feb 8

Session II: Apr 10

2:30 pm – 6:00 pm

Refresh skills and learn new ones while exploring the greenhouse collection of plants, spaces and tools of the trade at Selby. Students will get unprecedented access to photograph several of Selby's non-public world class epiphytes collections, known for their sculptural qualities. Class is scheduled to capitalize on the changing light of sunset.

*Instructor: Daniel Perales
Member, \$55; Non-member, \$65*

Art in the Digital Age

Feb 14, 10:00 am – 1:30 pm

Create multimedia art from digital photographs using simple mounting tools and techniques and following instructor recommended presets for artistic and impressionist brushes. Students will learn how to print images at home on readily available artist's grade watercolor and canvas papers.

*Instructor: Bob Fink
Member, \$35; Non-member, \$50*

New! Preparing for Photo Exhibits

Mar 21, 10:00 am – 1:30 pm

Learn how to prepare for juried photography competitions to enter Selby's 34th Annual Juried Photographic Exhibition with confidence. The importance of adhering to the rules, conditions and topics for the show and an understanding of how to use creativity, composition, lighting, and focus to increase your odds of being accepted and win prizes will be covered. How to print and mount photos will also be discussed.

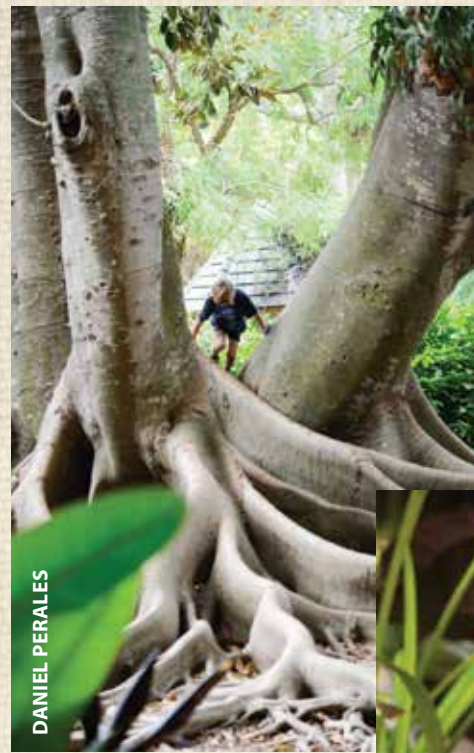
*Instructor: MaryAnne Hecht
Member, \$35; Non-member, \$50*

New! I-Phone Photography

Wed, Apr 9, 10:00 am – 1:30 pm

Is the i-phone camera all you need for your photo efforts? At first it wasn't, but new technology has changed this. This basic course will teach Mac users how to edit, add and use new advanced editing apps on their i-phones, and how to transfer phone images to a computer, i-pad or printer.

*Instructor: Bob Fink
Member, \$35; Non-member, \$50*



DANIEL PERALES



Grow A RAIN



WILLIAM SPEER



KATHLEEN KINNEY



DANIEL PERALES



KATHLEEN KINNEY

wing FOREST



WENDY CLARK



WENDY CLARK



“Selby Gardens has rolled out a ‘welcome mat’ for children and families!” And with that pronouncement from Selby’s CEO Thomas Buchter, officials cut an orchid-festooned vine to officially open the Ann Goldstein Children’s Rainforest Garden in November. Hundreds of donors, Gardens’ members and the community turned out to celebrate the happy occasion!

For the vine-cutting ceremony (from L to R): Sarasota City Commissioner Suzanne Atwell, Karly Keating, Selby board trustee Laurey Stryker, Thomas Buchter, lead donors Alfred Goldstein and Beverly Koski, landscape architect Herb Schaal and Selby board chair Cathy Layton.

Mother's Day Brunch



Sunday, May 11 • 10:00am • 11:30am • 1:00pm

GREAT ROOM BY THE BAY

Catered by Michael's on East

Brunch Item Highlights: ample buffet with favorite brunch items such as waffles, blintzes, eggs Benedict, carving stations, pastries in addition to mimosas and Bloody Marys!

Music by 2 Saxy

Ticket Price (includes Garden Admission): \$38 for members; \$18 for children ages 4-11; children 3 and under are free. Tickets will be available online and in the Welcome Center starting in April.

..... SELBY GARDENS ANNUAL

PLANT & GARDEN

New Programs! Expanded Activities!
A Horticultural Extravaganza! ☀



FESTIVAL

SATURDAY AND SUNDAY FEBRUARY 22 - 23, 2014 10:00 AM - 5:00 PM
(MEMBERS-ONLY ADMISSION 9:00 AM ON SATURDAY)



PHOTOS COURTESY JUSTIN DEMUTIS PHOTOGRAPHY

OA breathtaking botanical backdrop on Sarasota Bay provides an idyllic wedding setting for your once-in-a-lifetime day.

Selby Gardens, the place where magical memories are made, naturally

Priscilla “Pep” Ruddiman

1931 - 2013

She Made Selby Her Gardens



Retirement was not an excuse for Pep Ruddiman to rest on her laurels. Maybe that’s why she logged more than 14,000 post-retirement hours volunteering at Selby Gardens.

Pep’s generosity toward Selby Gardens even continued following her death last August. She provided resources in her will for the Gardens she loved to support botanical research, education, and horticultural displays.

Before she passed, Pep carefully planned her gift during conversations with Selby’s development team. She decided to designate her funds for general endowment. So each year, her perpetual gift will help keep Selby Gardens growing and blooming for visitors’ enjoyment where the funds are most needed.

Pep was an incredible woman – fascinating, intelligent, and generous. And it’s no surprise her family is just as interesting and just as generous. Her daughter, Chari Wurtzel, is thrilled that her mother’s spirit will live on through her gift. “It wasn’t my money. It was Mom’s to do with as she chose. Now I have the pleasure of seeing Mom’s name all over the garden. I have the pleasure of seeing Mom’s work moving forward. Children who never met Mom get to learn from her Gardens and enjoy them. How cool is that?”

While her passion and involvement with the Gardens will be missed, it feels like she never left because she has left an indelible mark on a place she cherished.

Calendar of Events

Learning, growing and exploring is an everyday happening at Selby Gardens!

JANUARY

1-31	10:00 am - 4:30 pm	Exhibit: Tropical Splendor, Garden Paintings by Anna Mason & Tom Stephens
7, 8, 11	10:30 am – 11:30 am	Little Sprouts' Club: The Rainforest from A to Z
15	12:00 pm – 1:00 pm	Ask an Expert: Climate Change: Come Hell or High Water
20	11:30 am	Selby Associates' Luncheon: Nature's Medicine Cabinet
25	1:00 pm	Rainforest Friends: Lynne Cherry (author of "The Great Kapok Tree")

FEBRUARY

1-27	10:00 am – 4:30 pm	Exhibit: Tropical Splendor, Garden Paintings by Anna Mason & Tom Stephens
4, 5, 8	10:30 am – 11:30 am	Little Sprouts' Club: The Rainforest from A to Z
5	12:00 pm – 1:00 pm	Ask an Expert: The John Tradescants: Gardeners, Travelers & Collectors
17	11:30 am	Selby Associates' Luncheon: Feng Shui in the Garden
22-23	10:00 am – 5:00 pm	Plant & Garden Festival

MARCH

4, 5, 8	10:30 am – 11:30 am	Little Sprouts' Club: The Rainforest from A to Z
6	5:30 pm – 7:30 pm	Opening Reception: Rainforest Masks 2014
7-31	10:00 am – 4:30 pm	Exhibit: Rainforest Masks 2014
11	11:30 am	Selby Associates' Luncheon: Grapes in the Garden
12	12:00 pm – 1:00 pm	Ask an Expert: Every Mask Tells a Story
18	1:00 am - 5:00 pm	Selby Gardens Nature Printers Exhibit & Sale
29	1:00 pm	Rainforest Friends: Sidiki Conde

APRIL

1-18	10:00 am – 4:30 pm	Exhibit: Rainforest Masks 2014
1, 2, 5	10:30 am – 11:30 am	Little Sprouts' Club: The Rainforest from A to Z
5	6:30 pm	Orchid Ball: Birds in Paradise
6	1:00 pm - 3:00 pm	Spring Music Series: SoulRcoaster
13	1:00 pm - 3:00 pm	Spring Music Series: June Garber & Hip Pockets
16	12:00 pm – 1:00 pm	Ask an Expert: More Mysteries of the Cabbage Palm
19	1:00 pm	Rainforest Friends: Music of the Rainforest
20	1:00 pm - 3:00 pm	Spring Music Series: Venturas http://theventuras.com/
21	11:30 am	Selby Associates' Luncheon: Bees, Our Friendly Helpers
27	1:00 pm - 3:00 pm	Spring Music Series: Pineview Jazz Band

Spring Music Series is paid for in part by Sarasota County Tourist Development Tax Revenues.



A Place in Her Heart for Butterflies

What began as a childhood fascination with butterflies has become a lifelong passion for Barb Feinberg, Selby Gardens volunteer curator for the butterfly garden.

Two decades ago, Selby Gardens established a demonstration garden in front of the Christy Payne Mansion to help people learn how to cultivate and care for butterfly habitats. Barb has been a regular fixture there since the garden opened. “A butterfly garden represents a microcosm of biodiversity,” she says. All sorts of insects, birds and reptiles – not to mention people! – are attracted to the garden.



And of course there are daily butterfly sightings. Depending on the season and sunlight, one might see up to 30 varieties of butterflies. While butterflies visit the garden year-round (except on very cold days) she says the best time of year to observe them is typically from April-October. She explains that because butterflies are cold-blooded, they need sun and heat to help them keep active. But all that activity means they burn a lot of energy, so they need concentrated sources of nectar for fuel. That’s where Selby’s butterfly garden comes into play.

Preparing plants for the garden is a careful and strategic exercise that is planned for not only the butterflies’ benefit but also human guests’ enjoyment. She explains that the foundation for the garden is bushes and perennials. Every spring and fall, annuals such as alyssum or black-eyed Susans, are introduced for color, fragrance and texture. Many different flowers attract adult butterflies, but caterpillars have specific host plants.

Barb cannot foresee ever growing weary of tending this garden. “It’s filled with elements of wonder, mystery and surprise. You never know who may fly in next.”

Barb’s advice for new butterfly garden enthusiasts:

Plant in as much sun as possible: more sun means more nectar, which in turn brings in more hungry butterflies.

Do not use pesticides except for oils and safe soaps. Avoid toxic substances.

If possible, plant the garden near a window so you can watch butterflies whether or not you are outside.

Butterfly gardens are a welcome addition at hospice or convalescence centers because of their ability to lift people’s spirits.

Use vertical surfaces in the garden to create more variety and diversity.

Butterfly gardens do require some maintenance which Barb refers to as “weeding, trimming, pruning and ‘editing’” so make sure you have time to care for your garden.

Caterpillars live in gardens where their “host plants” grow. To attract certain butterfly, learn what host plants their caterpillars need. Then butterflies will return to their egg laying source.



The Perfect Birthday Gift: A “Selby” Garden

There is an undeniable interdependence between people and plants. That’s why botanical gardens like Selby are especially popular as places where people enjoy gathering for ceremonies, celebrations and special occasions.

Several years ago when Selby Gardens member Doug Elder needed “just the thing” to help celebrate the occasion of his wife Betsy’s birthday that demonstrated how much she means to him, he thought of Selby. At the time, the Schimmel Wedding Pavilion with a perpetual view of Sarasota Bay and a refreshing sea breeze was newly completed and in need of some attractive landscaping. Doug thought a special garden in honor of his better half would be the perfect gift. He was right. The garden has become a favorite place for family get togethers and visits to the garden always make Betsy smile.

A decade later the Elders were attending a Chairman’s Circle event. The Chairman’s Circle is group of significant donors who support Selby Gardens’ mission. After a

conversation with Selby’s Chief Development Officer Ann Logan, Doug decided he wanted to rededicate his wife’s garden by giving it a horticultural update.

The garden’s eastern edge is the pavilion. Its other three sides are heavily shaded by a Texas ebony tree. It is also subject to cold, salty onshore breezes from the Bay making the re-design challenging. The suggestion of a river flowing to the sea represented by a wave of dwarf oyster plants was chosen as the central theme, then accented with limestone boulders and large ceramic pots. “Designing a garden for one of our members always takes on a special meaning for us,” says Mike McLaughlin, Selby’s director of horticulture.

A beautifully redesigned garden for a beautiful woman is now complete and what began a decade ago as a thoughtful gift for Betsy has also become a generous gift to the more than 135,000 annual visitors to Selby Gardens.

Happy Birthday, Betsy



A Beautiful Botanical Makeover

As guests to Selby Gardens wander south on the path just beyond the banyan grove, they chance upon the Succulent Garden. Succulents are a group of plants usually with thick, fleshy stems, leaves or roots designed to hold water. Easy to care for and drought-tolerant, succulents come in all kinds of interesting forms, textures, and colors.

Selby has had a succulent garden for more than 20 years. Not long ago, a longtime Selby advocate noticed this unique garden was not receiving enough sunlight to thrive. She helped connect the horticulture team with an out-of-state benefactor so nearby palms and shade trees could be trimmed to let in a little more light. But that was just the beginning! Now she’s made it possible for Dan Witten and others to give the succulent garden a whole makeover. In addition to infusing the garden with new species and varieties of succulents, the layout and configuration will be completely overhauled. When it reopens in 2014, the tall *Pachypodium* with its enlarged trunk adorned with clusters of spines will become a focal point. “When completed, the newly-renovated Succulent Garden will be bigger, brighter and better organized,” explained Witten.

IN RECOGNITION OF GIFTS RECEIVED JULY 1, 2013 THROUGH SEPTEMBER 30, 2013



Contributions

Chairman's Circle

Members of the Chairman's Circle enjoy exclusive benefits, including behind-the-scenes experiences for a true insider's look at the Gardens. For information about joining the Chairman's Circle, call Ann Logan at (941) 366-5731, ext. 266

We are pleased to recognize the following members of the Chairman's Circle:

Al Purmort Insurance
The Marie Selby Gardens Associates
Mr. and Mrs. Jack R. Allen
Amicus Foundation
Ms. J. Allison Archbold
and Mr. Hugh J. Bettendorf
Mr. and Mrs. Peter Bak
Bank of America Client Foundation
Mr. and Mrs. Antony Borthwick
Mr. and Mrs. Thomas Buchter
Casto Management Services, Inc.
Mrs. Pattie B. Clendenin
Dr. and Mrs. Kelvin Cooper
Mr. and Mrs. Thomas G. Cornell
Mr. and Mrs. Fernando Cuza
Dart Foundation
Mr. Dan Denton
Mr. and Mrs. David Denton
Mr. James E. Duffy
Mr. and Mrs. Douglas C. Elder
Dr. and Mrs. Fritz Faulhaber
Mr. and Mrs. Martin W. Faust
Mr. and Mrs. Joel D. Fedder
Mr. and Mrs. William T. Forrester
Founders Garden Club of Sarasota, Inc.
Mr. and Mrs. Alfred Goldstein
Mr. Robert D. Hevey
Mr. Charles Huisking
Gulf Coast Community Foundation
Mr. and Mrs. William Johnson
Mr. and Mrs. Steve Knopik
Mr. Marvin Kocian
Mrs. Beverly L. Koski
Ms. Cathy L. Layton
and Mr. Pete Russell
Mr. Harry Leopold
Linnie E. Dalbeck Memorial
Foundation Trust
Mr. and Mrs. Douglas G. Logan
Mr. and Mrs. J. Richard Matson
Mrs. Nathalie McCulloch

Ms. Virginia Miller
and Ms. Carol Miller
Mr. and Mrs. Francis Misantone
Mr. and Mrs. Keith Monda
Mrs. Gloria Moss
Mr. and Mrs. Charles Perret
Mrs. Alice W. Rau
Mr. Sandy Rederer
and Ms. Joni Steinberg
Rita B. Lamere Memorial
Foundation
Mr. and Mrs. O. Wayne Rollins
Mr. and Mrs. Chris N. Romine
Mr. and Mrs. Skip Sack
Ms. Michael Saunders
Mrs. Marjorie L. Schmiel
Mr. Steve Seidensticker
Mr. and Mrs. Thomas Shuff
Mr. and Mrs. Bayne Stevenson
Mrs. Betty Stewart
Mr. and Mrs. Charles Stottlemeyer
Mr. and Mrs. Elli Streit
Laurey and Charles Stryker
Mr. and Mrs. Hobart K. Swan
Mr. Ronald Taub
and Ms. Marcia Jean Taub
The Frank E. Duckwall
Foundation, Inc.
The Observer Group/
The Walsh Family
Mrs. Margarete van Antwerpen
Ms. Emily Walsh
Mr. and Mrs. Tom Watson
Mr. and Mrs. Leigh Weiner
Ms. Janet Wettlaufer
and Mr. Donald Miller
Mr. and Mrs. R. Elton White
Mr. Stephen V. Wilberding
and Ms. Teri Hansen
Mr. and Mrs. Arthur M. Wood Jr.
Dr. and Mrs. Fred Wurlitzer
Mr. and Mrs. Robert Zabelle

Mr. and Mrs. Stephen Kline
Mr. John Kokajko
Mrs. Sarah S. Krell
Ms. Emily C. Lane
Harley C. and Elizabeth Keedick Lee
Memorial Fund
Mr. William Lewis
and Ms. Susan Grundy
Ms. Kyle K. Lundquist
Mr. Robert Mannino
and Mrs. Denise Baker-Mannino
Mr. and Mrs. John A. Matta
Mr. and Mrs. Larry D. McCauley
Mr. and Mrs. Allan B. Miller
Ms. Joan C. Minoff
and Mr. Douglas Sharpe
Dr. and Mrs. William C. Morgan
Ms. Cassandra A. Nisbet
and Mr. Tim Smith
Dr. Betty Y. O'Dell
Ms. Carolyn S. Ripps
Mr. and Mrs. Frank Samponaro
Ms. Connie Schwartz
Mrs. Anita B. Scott
Ms. Barbara Shaver
Ms. Susan G. Simpson
and Ms. Mary Christina Simpson
Mr. and Mrs. Robert B. Spear
Mr. and Mrs. Jan D. Steber
Mr. and Mrs. Manuel Sturges
Mrs. Eva R. Talbert
and Ms. Sara de Godoi
Ms. Tamara Tazzia
and Ms. Martina Stewart
Mrs. Carolyn Wenzel
Dr. and Mrs. Joseph L. Wieczynski
Mr. and Mrs. Ty Wilkinson

Annual Fund

Ms. Peg Allen
and Mr. Steve Dixon
Ms. Susan R. Angermann
Mr. Robert M. Antonacci
and Mr. Timothy Maurer
Ms. Earleen M. Ashbrook
and Ms. Bulinna Dennis
Ms. Lesley Baker
Mrs. Virginia Baldau
Mr. and Mrs. Stephen W. Boesel
Mr. Walter K. Carlson
Mr. Calvin L. Elmendorf
Mrs. Esther Fishman
Mr. Robert W. Fleurant
Ms. Mary Foushi
and Mr. Phil Werdell
Mrs. Leila F. Frangie
Mr. Robert V. Garvin
Mr. and Mrs. William L. Guisewite
Gulf Coast Community
Foundation
Mrs. Dorothy B. Hamill
Mr. and Mrs. Mark Hammer
Mr. John R. Kline

Botany

Bromeliad Society International
Mr. and Mrs. Alan Esworthy
Sarasota Orchid Society, Inc.

Corporate Matching Gifts

The Boeing Company
ChevronTexaco Matching
Gift Program
ExxonMobil Foundation
H.J. Heinz Company
Walmart Corporate Giving

Estate Gift

The Estate of Priscilla "Pep"
Ruddiman

Grants

The Arts and Cultural Alliance of
Sarasota County
The Community Foundation of
Sarasota County, Inc.

Other Operating Support

Carlson Studio Marketing
Fawley & Bryant
SNN6
Serbin Printing
The Versatility Group
Wesco Turf



Membership

Stewards

Mr. and Mrs. James Armour
Mr. John W. Bean
and Ms. Alexandra Jupin-Bean
Mr. Ronald E. Boring
Mr. and Mrs. Stephen Buckley
Mr. and Mrs. C. Martin Cooper
Mr. John F. Cuneo, Jr.
Mr. and Mrs. Thomas J. Degnan
Mr. and Mrs. Michael Dow
Ms. Kimberly S. Dunn
Mrs. Ann M. Gamble-Blechta
Mr. and Mrs. Julian R. Hansen
Mr. and Mrs. Dennis Holly

IN RECOGNITION OF GIFTS RECEIVED JULY 1, 2013 THROUGH SEPTEMBER 30, 2013

Mr. and Mrs. E. Russell James
 Ms. Cornelia M. Kase
 and Mr. John Minton
 Ms. Deborah Knowles
 Mr. and Mrs. Brian Leaver
 Mr. Daniel R. Long III
 and Ms. Susan Kretz
 Mr. and Mrs. Thomas B. Luzier
 Mr. and Mrs. Allan B. Miller
 Mr. and Mrs. Francis B. Misantone
 Mr. and Mrs. Richard H. Nimitz
 Ms. Donna T. Rourke
 Mrs. Sylvia M. Thompson
 Mrs. Kate B. Wickham

Benefactors

Ms. J. Allison Archbold
 and Mr. Hugh J. Bettendorf
 Mrs. Jean R. Armour
 Mr. and Mrs. Jeffrey Bloch
 Mr. and Mrs. Stephen W. Boesel
 Mrs. Lois M. Cardinal
 Mr. and Mrs. Van G. Carlisle
 Mrs. Irene Chrisman
 Mr. and Mrs. Michael V. Corrigan
 Ms. Diane K. Deane
 and Mr. Jon A. Bakke
 Mr. and Mrs. Norman Dobiesz
 Ms. Arlena Dominick
 and Ms. Capri Blaskovich
 Mrs. Ann Esworthy
 Ms. Jane Famiglio
 and Ms. Talia Famiglio
 Ms. Marce Fuller
 and Mr. Lee De Ovides
 Mr. and Mrs. John Gartner
 Ms. Patricia A. Haas
 Mr. and Mrs. Larry Jamieson
 Mr. and Mrs. Michael V. Janes
 Dr. Diana Lager
 Dr. and Mrs. William Lahners
 Mr. and Mrs. Steve LaHood
 Mr. and Mrs. Rudolf J. Mueller
 Mr. and Mrs. Joseph Rewer
 Dr. Dennis A. Revicki
 and Ms. MaryLou Poe
 Mr. and Mrs. Jerry E. Robertson
 Dr. and Mrs. Frederick P. Romano
 Ms. Cathy A. Schawk
 Ms. Nancy Schroeder
 Mr. and Mrs. Robert M. Scully
 Dr. and Mrs. Stephen D. Smith
 Mr. and Mrs. Charles E. Stottlemeyer
 Mr. Thomas Wilson
 and Mr. Patrick Crimmings
 Dr. and Mrs. Robert L. Woods

Patrons

Mr. and Mrs. Darryl F. Allen
 Mr. and Mrs. Hal Alterman
 Mr. and Mrs. Arthur Armitage
 Mrs. Sylvia S. Barber
 Mr. and Mrs. William H. Bear
 Dr. Jeffrey S. Beard
 and Dr. Margita V. Beard
 Mr. and Mrs. Keith Bednarowski
 Mr. and Mrs. David Berkowitz
 Mrs. Libby Besse

Mr. and Mrs. Peter L. Biegel
 Mr. and Mrs. Douglas F. Blake
 Mr. and Mrs. Robert A. Blekicki
 Ms. Elsie S. Bracken
 Mr. and Mrs. Stephen P. Bradley
 Mr. and Mrs. David W. Brandenburg
 Mr. and Mrs. Peter F. Brennan
 Mr. and Mrs. Jonathan S. Bridgford
 Mr. and Mrs. Charles Cahn II
 Ms. Claudia N. Cannon
 Ms. Grace Carlson
 Mr. John F. Carson III
 and Ms. Agnes M. Schipper
 Mr. Michael K. Connelly
 and Ms. Meg Mahoney
 Mr. and Mrs. Philip L. Conover
 Ms. Helene Crawford
 Mr. and Mrs. Thomas Dentice
 Mr. and Mrs. Patrick Echlin
 Dr. and Mrs. Albert B. Eisenstein
 Mr. and Mrs. David D. Eller
 Mr. and Mrs. Leon Ellin
 Ms. Barbara B. Falcone
 Mrs. Ruth O. Frank
 Mr. and Mrs. John P. Gaffey
 Mr. and Mrs. Henry J. Gibeau
 Mrs. Valerie E. Gill
 Mr. and Mrs. Richard D. Godshalk
 Mr. Alfred R. Goldstein
 and Mrs. Jean Weidner-Goldstein
 Mr. and Mrs. Ronald R. Gossett
 Mrs. Cynthia J. Guiles
 Mrs. Hedwig Hamer
 Mrs. Janet E. Hevey
 Mr. and Mrs. George G. Hicks
 Mr. and Mrs. Bob Hoban
 Mr. and Mrs. Dennis R. Hollstadt
 Mrs. Janette Howard
 and Mrs. Martha Manning
 Mr. and Mrs. Charles Jacobson
 Dr. and Mrs. Harold Joels
 Mr. and Mrs. Donald R. Johnson
 Mrs. Betsy Kane-Hartnett
 Mr. John B. Kemp
 Mr. and Mrs. Donald Kreiss
 Ms. Sharon Leshner
 and Mr. Doug Hess
 Mrs. Nancy M. Marcotte
 Dr. Chetiva A. Maus
 and Mr. David W. Maus
 Mrs. Nathalie W. McCulloch
 Mr. Ben Meluskey
 Mr. and Mrs. Larry A. Merriman
 Mrs. Maria R. Molnar
 Mr. and Mrs. Peter Morris
 Ms. Christina Narr
 Mrs. Elinor M. Neal
 Mr. and Mrs. Patrick K. Neal
 Mr. and Mrs. Walter G. Neef
 Dr. and Mrs. Thomas L. Newberry
 Mr. and Mrs. Anthony Niewijk
 Mr. and Mrs. Fred Nobel
 Mr. and Mrs. James Padilla
 Dr. and Mrs. Daniel B. Pope
 Mr. and Mrs. Blaine Potter
 Mr. Charles J. Prizer
 Mr. and Mrs. Fred M. Richman

Ms. Sally Robinson
 Dr. Thaddeus S. Rodda
 Ms. Catherine S. Rodriguez
 Mr. and Mrs. Sam Rubinovitz
 Mr. and Mrs. Werner Schuele
 Dr. Judith F. Shank
 and Mr. Stephen G. Shank
 Ms. Sarah C. Skebba
 and Mr. Michael E. Bernstein
 Mr. and Mrs. Willie M. Stanfield
 Mr. and Mrs. Richard W. Starostecki
 Ms. Karen Stewart
 and Mr. Doug Zartman
 Dr. and Mrs. David Sugar
 Mr. and Mrs. Roger E. Thibault
 Ms. Barbara Thomason
 Mr. Charles Thomson
 and Mrs. Sara Fields-Thomson
 Mr. and Mrs. Albert J. Webel
 Ms. Phyllis Werber
 and Mr. Matthew F. Ruch
 Mr. Daniel West
 Mr. and Mrs. R. Paul Westpheling
 Mr. and Mrs. Robert Williams
 Mr. and Mrs. John A. T. Wilson

Supporters

Mr. and Mrs. Robin G. Adair
 Mr. Gary Albert
 and Mr. Jim Shoemaker
 Mr. and Mrs. Barry Alexander
 Mr. and Mrs. Jack R. Allen
 Dr. Janet E. Allgair
 and Dr. George W. Allgair
 Mrs. Patricia Anderson
 Ms. Dolores Andrew
 and Mr. Warren Clark
 Mr. and Mrs. Harold C. Andrews
 Mr. and Mrs. Michael J. Andriola
 Mrs. Elaine S. Arzberger
 Mr. and Mrs. Bud Aspatore
 Mr. and Mrs. Ken H. Bachman
 Mr. and Mrs. C. Dan Bailey, Jr.
 Mr. and Mrs. H. Whitney Bailey
 Mr. and Mrs. Peter Bak
 Mrs. Ruth A. Barker
 Mr. and Mrs. Andrew E. Barnes
 Mrs. Carmen Baskind
 Mr. and Mrs. Dexter P. Baum
 Mr. and Mrs. Gregory H. Belew
 Councilman
 and Mrs. James H. Bennett
 Mr. and Mrs. James Billingsley
 Dr. Janet Bisset
 and Dr. Kevin Madden
 Mr. Donald H. Bittner
 Mr. and Mrs. Charles Blackburn
 Dr. Daniel J. Blacklow
 Mr. and Mrs. Walter C. Bladstrom
 Mr. and Mrs. Robert Blalock
 Mr. and Mrs. Willard Block
 Mr. and Mrs. Michael Bommer
 Mr. Robert L. Booth
 Mr. and Mrs. Antony Borthwick
 Mr. and Mrs. Gil Bosse
 Mrs. Elaine M. Boyer
 and Mrs. Christy Boyer
 Mr. Edward Brickman

Mr. and Mrs. Paul Brodtkin
 Mr. and Mrs. Michael Brousseau
 Mrs. Margaret R. Brown
 Mr. and Mrs. Michael Brown
 Mr. and Mrs. Michael Brunett
 Mr. and Mrs. Thomas Buchter
 Mr. and Mrs. James J. Buck
 Mr. and Mrs. Thomas Budny
 Ms. Nancy S. Bushnell
 and Mr. Victor G. Reiling, Jr.
 Mr. and Mrs. Kevin Butler
 Ms. Patricia Buttenheim
 Mr. and Mrs. Louis W. Cabot
 Ms. Nancy W. Callis
 Dr. Richard Cardozo
 Mr. and Mrs. Kenneth D. Cardwell
 Mr. and Mrs. Lloyd W. Carter
 Mr. and Mrs. Robert W. Case
 Mr. and Mrs. James Cash
 Ms. Irene Cass
 Ms. Amy Chappell
 Mr. and Mrs. Stephen J. Chase
 Mr. and Mrs. Peter J. Christ
 Mr. and Mrs. Edward K. Christian
 Mrs. Mary H. Clark
 Ms. Patricia K. Clark
 and Ms. Cynthia Bloom
 Mrs. Pattie B. Clendenin
 Mr. and Mrs. Ralph L. Cobb
 Mr. and Mrs. Ric Coffey
 Ms. Marie Cohen
 Mrs. Phyllis C. Collins
 Mrs. Martha T. Combs
 Mrs. Marjorie Connor
 Mr. and Mrs. N. Perry Cook
 Dr. and Mrs. Kelvin Cooper
 Mr. Robert E. Copeland
 Mr. and Mrs. Jeff Cordes
 Mr. and Mrs. Thomas G. Cornell
 Mr. and Mrs. Warren Coville
 Mr. and Mrs. Richard Coyle
 Mrs. Catherine B. Cranor
 Mr. and Mrs. Anthony C. Crisci
 Ms. Herta Cuneo
 Mr. and Mrs. Fernando Cuza
 Mrs. Jane R. Daganhardt
 Mr. and Mrs. Joseph Daku
 Mr. and Mrs. Alfred D'Alessio
 Mr. and Mrs. William P. Danner
 Mr. and Mrs. Robert Dart
 Mr. and Mrs. John C. Davis
 Mr. and Mrs. J. David Day
 Mr. and Mrs. Dale De Haan
 Mr. and Mrs. James De Haan
 Mr. and Mrs. Philip A. Delaney
 Mr. Dan Denton
 Mr. and Mrs. David Denton
 Mrs. Zita Desenberg
 Mr. and Mrs. Richard J. Diedrich
 Mr. and Mrs. Matt Dobbins
 Mrs. Rebecca Donelson
 and Dr. Robert Blattberg
 Mr. and Mrs. Murray Duffin
 Mr. James E. Duffy
 Mr. and Mrs. Joel E. Dyckes
 Mr. and Mrs. George H. Edmonds
 Mr. and Mrs. Roger Effron

Dr. Alvar O. Elbing
and Dr. Carol J. Elbing
Mr. and Mrs. Douglas C. Elder
Dr. Catherine M. Elliott
and Dr. Douglas R. Elliott
Mr. and Mrs. Jim Ericson
Mr. and Mrs. Robert Essner
Mr. and Mrs. Zachary R. Estrin
Mr. and Mrs. William Eubank
Mr. and Mrs. Paul Euwer, Jr.
Mr. and Mrs. Richard Evans
Mr. and Mrs. Fred C. Falkner
Mr. and Mrs. S. David Farr
Dr. and Mrs. Fritz Faulhaber
Mr. and Mrs. Martin W. Faust
Mr. and Mrs. Joel D. Fedder
Dr. and Mrs. Cary Findlay
Ms. Mary A. Findling
and Mr. John Hurt
Ms. Tracy Fitzpatrick
Mr. and Mrs. William T. Forrester
Mr. and Mrs. Edward H. Foss
Mrs. Shirley Foss
Mr. and Mrs. Herman Frankel
Mr. and Mrs. Robert Fritsch
Mr. and Mrs. David D. Furer
Mr. and Mrs. Steve Fyffe
Mrs. Silvia K. Galmarini
and Mrs. Maria Galmarini
Mr. and Mrs. Ed Garno, Jr.
Mr. and Mrs. John W. Gawron
Mr. and Mrs. Theodore C. Geier
Mr. and Mrs. Paul H. Geithner, Jr.
Mrs. Martha S. George
Ms. Lisa Gialdini
Mr. and Mrs. Alan R. Giever
Mr. and Mrs. Edwin Gill
Mr. and Mrs. Jordan E. Gillman
Mr. and Mrs. Herbert B. Goffman
Mr. and Mrs. Joseph Goggin
Mr. and Mrs. Nelson Goldner
Mrs. Charlotte P. Gollobin
Mr. and Mrs. Dan Goloveyko
Mrs. Grace Gorlitz
and Ms. Gail Gorlitz
Mr. Samuel P. Gotoff
Mr. and Mrs. John H. Gove
Mr. Edward T. Green
Ms. Sandra R. Greenberg
Mr. and Mrs. Stephen Greene
Mr. and Mrs. Kenneth Grenier
Mr. and Mrs. Larry Grescoviak
Mr. and Mrs. Norman Gross
Mr. and Mrs. Gary Gulden
Mr. and Mrs. Albert Haab
Mr. and Mrs. Jonathan Haar
Mr. and Mrs. Edward Halloran
Mr. and Mrs. James P. Halstead
Mrs. Dorothy B. Hamill
Mr. and Mrs. Jeff Hamilton
Mr. and Mrs. Keith Hamilton
Mr. and Mrs. Joseph R. Hanson, Jr.
Mr. Richard C. Harmon
The Honorable Katherine Harris
and Mr. Anders Ebbeson
Mr. and Mrs. Glenn Harrison
Mr. and Mrs. James V. Hartlage, Jr.
Mr. and Mrs. Scott Hase
Dr. and Mrs. Jess Hawke
Mrs. Alice Hawrilenko
Mr. and Mrs. Garrett Heard IV

Mr. and Mrs. Norman Herber
Dr. and Mrs. Alfred D. Hernandez
Mr. and Mrs. Arthur Hersberger
Ms. Claire E. Herzog
Mrs. Michele Herzog
Mr. and Mrs. Henry Heusner
Mr. Robert D. Hevey
and Ms. Constance M. Filling
Mr. and Mrs. Lance Hewitson
Mr. Christopher L. Hicklin
Dr. Penny H. Hill
and Dr. Lawrence Wild
Lt. Gen. Jerome B. Hilmes
Ms. Jean Hall Hinckley
Mr. Emil G. Hirsch
and Mr. Bernard D. Hirsch
Mr. and Mrs. Rod Hollingsworth
Ms. Ann B. Hollins
Mr. Nick Hopkin
and Mr. Nick Lambert
Mr. and Mrs. John Hopper
Mr. and Mrs. Joseph C. Howe
Mr. and Mrs. Terry D. Hudson
Ms. Sandra R. Hughes
Mr. Charles Huiscking
Mr. Brett Hutchens
Mr. and Mrs. Christopher Hutchins
Mr. Peter Imrik and Mr. Eric Bowyer
Mrs. Barbara T. Ives
Mr. Orton P. Jackson, Jr.
Mr. and Mrs. Robert Jackson
Mr. and Mrs. Rick L. James
Mr. and Mrs. Oliver J. Janney
Mr. and Mrs. Arthur W. John
Mr. and Mrs. Poindexter M. Johnson
Dr. and Mrs. Robert L. Johnson
Mr. and Mrs. William R. Johnson
Mr. and Mrs. John P. Jones
Mr. and Mrs. Jack L. Jost
Mr. and Mrs. Michael Jowett
Mr. Jack Kallis
and Ms. Marna Cogswell
Dr. Michael Kalman
Ms. Margaret S. Kaminiski
Dr. and Mrs. Steven W. Kamm
Mr. and Mrs. David Karoub
Mr. Richard G. Katz
Mrs. Margretta P. Kauffman
Mr. and Mrs. George F. Keane
Mrs. Betty J. Keil
Mrs. Margaret Z. Kelley
Mr. Richard Kemmler
and Mr. Nicolas Curpluk
Mrs. Nancy Kennedy-Wood
and Mrs. Melissa Mohammed
Mr. and Mrs. Patrick W. Kenny
Mr. and Mrs. William Kestelik
Mr. and Mrs. John E. Kidd
Ms. Sara K. and Ms. Sarabeth King
Capt. James T. Kirk
Mr. and Mrs. Bruce M. Kleinberg
Mr. Lorin K. Klukas and Mr. Bill Wood
Mr. and Mrs. James J. Knicos
Mr. and Mrs. Stephen Knopik
Mr. Marvin Kocian
Mr. David Koehlinger
and Dr. William Ayer
Mr. and Mrs. Stewart L. Kohn
Mrs. Beverly L. Koski
Mr. Michael R. Krupp
Mr. and Mrs. Walt Kuerschner

Mr. and Mrs. William R. LaFollette
Ms. Louise Lamphier
Ms. Jean E. Langdon
Mr. and Mrs. Ellis L. Lasberg
Ms. Darlene Lawrence
and Ms. Jennifer LaFemina
Ms. Dorothy E. Lawrence
Mr. and Mrs. Richard L. Leach
Ms. Nancy C. Ledding
and Ms. Susie Berger
Ms. Margret Lehnert
and Mr. Leo Orye
Mr. Harry Leopold
Mrs. Alison Levin Bishop
and Mrs. Ruth Levin
Mr. and Mrs. Gordon I. Levine
Ms. H. Lee Levins
Ms. Leone Levy
and Ms. Cassandra Winters
Mr. and Mrs. Robert W. Lewis
Mr. and Mrs. Christopher Light
Mrs. Betty Lindenberg
Mr. and Mrs. Per-Erik Lindqvist
Mrs. Elizabeth Lindsay
Mrs. Joan M. Lipsky
Mr. John F. Lo Russo
Angelina Loetschert
and Christian Tschudi
Mr. and Mrs. Douglas G. Logan
Ms. Elizabeth Lucchesi
Ms. Kyle K. Lundquist
Mr. Philip Reiss and Mrs. Lynn Lyons
Ms. Jill Lyons
Mr. and Mrs. Vytas Maceikonis
Mr. and Mrs. Robert Maciag
Mr. and Mrs. Sean Maher
Ms. Laverne Mahloch
Mr. and Mrs. Ralph S. Major, Jr.
Mr. and Mrs. John Manatt
Mr. and Mrs. Morton Mandel
Ms. Rachel K. Mann
Mr. and Mrs. Thomas K. Marshall
Mr. and Mrs. Lawrence Maschino
Dr. and Ms. David Massari
Mr. and Mrs. Henk Mastenbroek
Mr. and Mrs. J. Richard Matson
Dr. and Mrs. Martin H. Max
Mrs. Lynn M. McBrier
Mr. and Mrs. Jonathan McCague
Mr. and Mrs. Dennis S. McChesney
Mr. and Mrs. Michael McCool
Mrs. Dawn C. McDonald
Mr. Michael McGrael
Mr. and Mrs. Jim McInteer
Ms. Joanne McIntyre
Mr. and Mrs. Robert McKean
Mr. and Mrs. Mike B. McKee
Mrs. Edith V. Mehiel
Mr. and Mrs. L. Scott Merritt
Mrs. Margrit Messenheimer
Ms. Carol L. Miller
Ms. Sally Miller
Mr. and Mrs. Don Miraco
Mr. and Mrs. Keith D. Monda
Mr. Dom Monge
Mr. and Mrs. Harry Moore
Mr. and Mrs. Paul E. Morrisroe
Mrs. Gloria Moss
Mr. and Mrs. Alan Mossberg
Dr. and Mrs. Earl M. Mumford
Mr. and Mrs. Richard M. Murray

Mr. and Mrs. Charles W. Naylor
Dr. and Mrs. Philip K. Nelson
Mr. William M. Neunder
and Dr. Joseph Neunder
Mr. and Mrs. Richard F. Newman
Ms. Cassandra A. Nisbet
and Mr. Tim Smith
Ms. Margaret Noble
Mr. James F. Noss
Mr. and Mrs. Gerald R. O'Connor
Ms. Leslie O'Dell
and Mr. Glenn Kelley
Ms. Chris A. Olson
and Mr. Jim Eccleston
Mr. Thomas L. Olson
and Ms. Elizabeth B. Fugazzi
Mr. and Mrs. Robert O. Orders
Ms. Beatrice M. Orive
Mr. and Mrs. David Osborn
Mr. and Mrs. Peter Osgood
Ms. Karen N. O'Shea
and Mr. Michael Strebek
Mr. and Mrs. Calvin P. Owen
Dr. and Mrs. Guillermo Oynick
Mrs. Babette and James Pachence
Mr. and Mrs. Jack Panoyan
Dr. and Mrs. Peter A. Pav
Mr. and Mrs. John W. Pearce
Dr. and Mrs. Thomas Pecsvaradi
Mr. and Mrs. Jim Peelor
Mr. and Mrs. David T. Peirce
Mr. and Mrs. John F. Peirson
Mr. and Mrs. Charles Perret
Mrs. Betty K. Phillips
Mr. and Mrs. William A. Phillips
Mrs. Audrey Pinney
Dr. and Mrs. Iren J. Pober
Mr. and Mrs. Michael D. Porter
Ms. Patricia Porter-Edwards
Mr. and Mrs. William E. Power
Dr. and Mrs. John A. Puleo
Mr. and Mrs. Al Purmort
Mr. and Mrs. Henri L. Quintal
Mr. and Mrs. Peter A. Rakowski
Mrs. Jean K. Ranallo
and Mrs. Rose Sujdak
Mrs. Alice W. Rau
Mr. and Mrs. Ronald Rayevich
Ms. Kelley Rea
Mr. and Mrs. Lawrence B. Reams
Mr. Sandy Rederer
Mrs. Nora Lea Reeve
Mr. and Mrs. Antone A. Reeves III
Mr. Gary Remmen
and Ms. Beverly Barish
Mr. and Mrs. James Repp
Ms. Joan K. Resker
Mr. and Mrs. M. William Rex
Ms. Gloria Rigopoulos
and Mr. Joseph Stout
Mr. Alex Rigopoulos
and Ms. Sachi Sato
Mr. and Mrs. Luis Rivas
Mr. and Mrs. John H. Rixse
Rev. Judith S. Roberts
and Mrs. Sarah R. Barton
Mrs. Mary Ann Robinson
Mr. Daniel E. Robinson
Mr. and Mrs. Leo H. Roi
Mr. and Mrs. O. Wayne Rollins
Mr. and Mrs. Chris N. Romine

Mr. and Mrs. Edward Rosenblum
 Mr. and Mrs. Arthur F. Rossberg
 Mr. and Mrs. Sam D. Roth
 Mr. and Mrs. Uzi Ruskin
 Ms. Cathy L. Layton
 and Mr. Pete Russell
 Mr. and Mrs. Alan Sachs
 Mr. and Mrs. Skip Sack
 Mrs. Maggie Samarco
 Mrs. Risha Samuelson
 Ms. Michael Saunders
 Mrs. Marjorie L. Schmiel
 Mr. and Mrs. William G. Schmus
 Mrs. Ina Schell
 and Dr. Arthur Ancowitz
 Mr. and Mrs. Richard W. Schoenke
 Mr. Thomas W. Schulte
 Mr. and Mrs. Robert G. Schwartz
 Mr. and Mrs. Charles B. Schwartz
 Mr. Steve Seidensticker
 Mr. and Mrs. Niranjan Seshadri
 Mr. and Mrs. Thomas Settle
 Mr. and Mrs. William C. Sexton
 Mr. and Mrs. Donald B. Shackelford
 Mr. and Mrs. Harvey M. Shapiro
 Ms. Mary Ann Shea
 and Ms. Bonnie Barton
 Ms. Marleigh C. Sheaff
 and Mr. Stephen Bracker
 Mr. and Mrs. Thomas R. Shepard, Jr.
 Mr. and Mrs. Simon Shlenker, III
 Mr. and Mrs. Thomas Shuff
 Mr. and Mrs. Murray Sidman
 Mr. and Mrs. Ralph A. Sieve
 Mr. and Mrs. John Simensen
 Mr. and Mrs. David Simmons
 Mr. Michael Sims
 and Ms. Grace W. Winkler
 Mrs. Millissa Skemp Gould
 and Mr. Arthur Gould
 Mrs. Nancy L. Smith
 Mr. and Mrs. Curtis L. Smith, Jr.
 Mr. Roderick Smith
 and Ms. Lois Patterson
 Mr. and Mrs. W. Haywood Smith
 Ms. Cynthia O. Smyth
 Ms. Christie Soffel
 Mr. and Mrs. Zuheir Sofia
 Mr. and Mrs. James Sortore
 Ms. Marilyn Spencer
 Mrs. Anne Spindel
 and Miss Stephani Spindel
 Ms. Linda L. Spivey
 Dr. and Mrs. Thomas C. Spoor
 Mr. and Mrs. Gerald A. Spore
 Mr. and Mrs. Harvey D. St. John
 Dr. and Mrs. John M. Steele
 Mr. and Mrs. David Stetson
 Mr. and Mrs. Bayne Stevenson
 Mrs. Betty A. Stewart
 Mr. and Mrs. Benjamin Strong
 Mr. and Mrs. Joseph A. Strosnik
 Dr. Laurey M. Stryker
 and Dr. Charles Stryker
 Ms. Elizabeth Sublett
 Mr. and Mrs. John J. Sullivan
 Mr. and Mrs. Hobart K. Swan
 Mr. and Mrs. Daniel L. Swanson
 Mr. and Mrs. Jack Tate
 Dr. Ronald H. Taub
 Mr. and Mrs. Scott B. Taylor

Mr. and Mrs. Thomas R. Testwuide, Sr.
 Mr. and Mrs. Richard Theidel
 Mr. and Mrs. Arthur R. Thevenin
 Mr. and Mrs. Harold N. Timmer
 Mr. John A. Timoshenko and Mr.
 Steven G. Timoshenko
 Mr. and Mrs. Roger Tinney
 Ms. Deborah Tomczyk
 Mr. and Mrs. Richard Toppel
 Ms. Janet C. Trettau
 Mr. and Mrs. William D. Troutman
 Mr. and Mrs. Robert P. Tschudy
 Mr. and Mrs. Robert Turffs
 Mr. and Mrs. Philip Turk
 Mr. and Mrs. Samuel Turner
 Mrs. Sylvia N. Turner
 Mr. and Mrs. Louis A. Urso
 Mrs. Margarete van Antwerpen
 Mr. and Mrs. James J. VanSuch
 Mr. and Mrs. Arnold Vance
 Ms. Shauna VanderHoek
 and Mr. Spencer Garrett
 Mr. and Mrs. Peter Vandermark
 Mr. and Mrs. Raymond Vecchi
 Mr. and Mrs. Vincent P. Ventimiglia
 Mr. and Mrs. Mike Venz
 Mr. and Mrs. E. John Wagner II
 Mr. and Mrs. Philip Wagner
 Mr. and Mrs. Rolf Wagschal
 Mr. and Mrs. Stephen M. Walker
 Ms. Emily A. Walsh
 Mr. and Mrs. Matt Walsh
 Mrs. Eleanor Watson
 Mr. and Mrs. Thomas H. Watson
 Mr. and Mrs. Dana Watts
 Mr. and Mrs. Dick Weerts
 Mr. and Mrs. Leigh Weiner
 Dr. Karen C. Weiner
 and Mr. J. L. Weiner
 Mrs. Mildred Weissman
 Dr. and Mrs. John D. Welch
 Dr. and Mrs. Stanley G. Werner
 Ms. Janet Wettlaufer
 and Mr. Donald Miller
 Ms. Kim L. Wheeler
 Dr. James J. White
 and Mrs. Anne M. Jacobi-White
 Mr. and Mrs. R. Elton White
 Mr. Stephen V. Wilberding
 and Ms. Teri Hansen
 Mr. and Mrs. William A. Wildhack
 Mr. and Mrs. Robert W. Wilson
 Dr. and Mrs. Stan Williams
 Mr. and Mrs. Tom R. Williams
 Mr. and Mrs. Thomas Winkofski
 Mr. and Mrs. Fred Wittlinger
 Mr. and Mrs. Arthur M. Wood, Jr.
 Mr. and Mrs. Dale Woodling
 Mr. and Mrs. John W. Woods III
 Dr. Elzbieta Wozniak
 Ms. Norma Jean Wright
 Dr. and Mrs. Fred Wurlitzer
 Mr. and Mrs. Thomas M. Yamin
 Mr. and Mrs. P. Brian Young
 Dr. John J. Yurosko
 Mr. and Mrs. Robert Zabelle
 Mr. and Mrs. W. Paul Zampol
 Dr. and Mrs. Ruan Jin Zhao
 Mr. and Mrs. Frank Zimmerman
 Mr. and Mrs. Johnnie M. Zinn

Memorials and Tributes

A memorial or tribute gift to the Gardens is a wonderful way to honor family and friends. Listed are gifts received between July 1, 2013 and September 30, 2013.

Memorial Contributions

In Memory of Grant Dazey
 Mr. and Mrs. Frederick C. Faulkner
 Ms. Molly M. Maguire
 Nine Hole Men's Golf Association
 at Palm Aire Country Club
 The Club Villas II at Palm Aire
 Condo Association

In Memory of Suzanne L. Dengel
 Ms. Catherine D. Brantley
 Mr. and Mrs. Robert Cappelmann
 Ms. Jeanne Czervionke
 Mr. and Mrs. Richard Elshans
 Mrs. Noreen M. Halbach
 Mrs. Deborah Hank
 Mr. and Mrs. Ronald Huse
 Mr. and Mrs. Victor R. Kruger
 Ms. Cindy Schatzle
 Ms. Elizabeth A. Shockley
 Zeta Associates

In Memory of Mary Anne Stallings
 Ingram
 Ms. Camille A. Bowman

In Memory of Michael Ingram
 Ms. Camille A. Bowman

In Memory of Karie Levin
 Ms. Diana Paver

In Memory of Priscilla "Pep"
 Ruddiman
 Mrs. Gail P. Blackmer
 Mr. and Mrs. William R. Brady
 Ms. Donna L. Carter
 DeKalb County Board of Health
 Mr. James Friedman
 Law School Admission Council
 Mr. Curt Lippe
 Ms. Carol A. O'Neill
 Mr. and Mrs. Jack Rosenbloom
 Ms. Elizabeth P. Ruddiman
 Ms. Cynthia O. Smyth
 Mr. and Mrs. Sowell
 Mr. Eric Wu

Tributes

Betsy Elder Garden
 Mr. and Mrs. Douglas C. Elder

In Honor of Janice Zoller
 Ms. Whitney Hyde

Butterfly Garden Walkway
 Bricks in Memoriam

In Memory of Suzanne L. Dengel
 Ms. Jonan G. Cohen and Family
 Mr. and Mrs. Douglas J. Wood
 and Family

In Memory of Maryanna D. Larsen
 Ms. Ann Duffy

In Memory of John Luxardo
 Corey Davis & Friends

In Memory of John Logan Walker
 Ms. Jean Walker

Bricks in Tribute

In Honor of Chris Romine
 Marie Selby Botanical Gardens
 Board of Trustees

Please notify us of omissions or errors. You may contact us at (941) 366-5731 or email development@selby.org.



**811 South Palm Avenue
Sarasota, Florida 34236
www.selby.org**

NON-PROFIT ORG.
U.S. POSTAGE
PAID
PERMIT #698
LEBANON JUNCTION, KY

SAVE THE DATE

2014 Orchid Ball
SATURDAY APRIL 5, 2014
6:30PM TO MIDNIGHT

Don't miss Sarasota's most beautiful gala –Orchid Ball 2014, "Birds in Paradise." The enchanted evening includes cocktails beside the waterfall in Selby Gardens' fabulous new rainforest, dancing by moonlight and a lavish dinner by Michael's on East. Tickets are \$300 per person on a first-come first-served basis. To purchase tickets, go to www.selby.org after February 1 or call Cynthia Dwyer at (941) 366-5731, ext. 229. Table sponsorships are available.