

MARIE
SELBY
BOTANICAL
GARDENS®

TROPICAL dispatch

JANUARY-APRIL 2019

JEAN & ALFRED GOLDSTEIN EXHIBITION SERIES

GAUGUIN



Voyage to Paradise



The dawn of a new year always brings excitement and anticipation for all the wonderful opportunities ahead. At Selby Gardens, the beginning of 2019 is off to a glorious start thanks to a strong end to 2018. In Sarasota, the new year also welcomes back many of our friends and guests who may have spent the summer away. I welcome you back to the Gardens.

To begin, last August, I was honored to commit to a 10-year contract as the President & CEO of Selby Gardens. I'm so appreciative of the trust the Board of Trustees has in me and the ability to enact dynamic changes that will ensure a vibrant future for Selby Gardens. I am entirely dedicated to bringing to realization all that I know this institution is capable of, which will be for the betterment of the entire Sarasota community and our world of scientific research.

Join me in bringing this transformation to fruition by being a part of **Innovating A Greener Future: Living Inspiration for a Living Museum—The Campaign for Selby Gardens**, which launched in October. What's most impressive about this campaign, led by Trustees, co-chairs and lead donors, Jean Weidner Goldstein, Cornelia Matson, and Pauline Wamsler, is that more than half of the funds for Phase One of the Master Plan transformation have been secured. Learn more about this campaign and the Master Plan on pages 4-5.

On pages 10-11, you will see a few of the plants our horticultural team will integrate into the living plant displays for **Gauguin: Voyage to Paradise** and an engaging essay by the curator, Dr. Carol Ockman, vividly explores Gauguin's South Pacific adventures and the people, places, and plants that influenced his work. There are many opportunities to explore and experience Gauguin through classes, special lectures, and performances by Sarasota's world-class arts and cultural organizations. As you can tell, there are many reasons to come back often to the Gardens.

In this issue you will also learn about awards for our outstanding volunteers and donors, including the well-deserved recognition for Trustee Jean Weidner Goldstein for her leadership in Sarasota's cultural community.

I look forward to having you, your families, and your friends experience the Gardens numerous times during the next few months!

Cheers,

Jennifer O. Rominiecki



"I AM ENTIRELY COMMITTED TO BRINGING TO REALIZATION ALL THAT I KNOW THIS INSTITUTION IS CAPABLE OF."

BOARD OF TRUSTEES

Michael J. Wilson, Esq., *Chair*
Pauline Wamsler, *Vice Chair*
Katherine A. Martucci, *Secretary*
Andrew M. Economos, Ph.D., *Treasurer*
J. Allison Archbold, Esq.
Norbert P. Donelly
Jean Weidner Goldstein
Teri A Hansen
Marcy Klein
Cornelia Matson
Marianne D. McComb
Daniel M. McDonald, *STAR Leadership Program*
Charlie Mueller
Sharyn Weiner
Margaret Wise
Jennifer O. Rominiecki, *President & CEO*
Dr. Carlyle A. Luer, *Trustee Emeritus*

ADVISORY COMMITTEE

Teri A Hansen, *Chair of the Advisory Committee*
Gerri Aaron
Maryann Armour
Eileen Curd
Ariane Dart
Dr. Calaway H. Dodson
Betsy Elder
Douglas C. Elder
Martin Faust
William Gamble
Scott Greer
Barbara Hansen
Katherine Harris
Stephen Hazeltine
Gary Heard
Rod Hollingsworth
Carolyn Johnson
Nora Johnson
Wilson M. Jones
GeeDee Kerr
Beverly Koski
Martin Kossoff
Richard Lawrence, Esq.
Flora Major
Dr. Elaine Marieb
Nathalie McCulloch
Charles Murphy
Anand Pallegar
Alice Rau
Sandy Rederer
Wayne Rollins
Michael Saunders
Nikki Sedacca
Charles Stottlemeyer
Dorothy Stottlemeyer
Joseph Strosnik
Dr. Laurey T. Stryker
Dr. Kiat W. Tan
Gwen Watson
Arthur M. Wood, Jr.
Peggy Wood

MISSION

To provide an oasis of inspiration and tranquility, while furthering the understanding and appreciation of plants, especially epiphytes.

PROGRAM SPONSORS

Selby Gardens programs are sponsored in part by the State of Florida, Department of State, Division of Cultural Affairs; the Florida Council on Arts and Culture; and are paid for in part by Sarasota County Tourist Development Tax Revenue



MEMBER ADDRESS CHANGES

Mail: Membership
Marie Selby Botanical Gardens
811 South Palm Avenue, Sarasota, FL 34236
Email: membership@selby.org
Phone: (941) 366-5731, ext. 231



Accredited by the American Alliance of Museums



Accredited by the Center for Plant Conservation

Message from the President and CEO 3

INNOVATING A GREENER FUTURE

Living Inspiration For A Living Museum: The Campaign For Selby Gardens 4-5

GAUGUIN'S "PARADISE"

Essay by Dr. Carol Ockman, Curator-at-Large 6-8

GAUGUIN-RELATED LECTURES 9

THE PLANTS OF PARADISE 10-11

GAUGUIN-RELATED CLASSES 11

EVENTS 13-15

THE GARDENS' GLOBAL REACH

Worldwide Collaboration with Plant Researchers . . . 16-17

THE FAMILY TOGETHERNESS PROGRAM

Community Foundation of Sarasota County Helps Introduce Children to Nature 17

SELBY GARDENS' AWARD-WINNING SUPPORTERS

Jean Weidner Goldstein and Bob LaRoe 18-19

CLASSES 20-22

SUPPORT & DONORS 23-27

Would you prefer to receive your *Tropical Dispatch* electronically? If so, please email us at marketing@selby.org to be part of our conservation efforts.

ABOUT THE COVER

Plumeria, or more commonly, Frangipani, is a flower found throughout French Polynesia and is popular for making leis. ID 4223225 © Robyn Mackenzie | Dreamstime.com

HOURS & ADMISSIONS

Garden Hours The Gardens are open 10 a.m. – 5 p.m. every day except Christmas Day. Please check selby.org for special event and weather closings.

Admission Members: Free Adults: \$20
Children 4-17: \$10 3 & under: Free
(Rates may vary for special exhibitions)

Connect with Us! @selbygardens

INNOVATING A GREENER FUTURE

Living Inspiration For A Living Museum: The Campaign For Selby Gardens

MORE THAN 40 YEARS AGO...

Marie Selby left her property in our care to preserve an oasis of green space in the midst of downtown Sarasota. Her executors created the world's only botanical research garden specializing in epiphytes, or air plants such as orchids and bromeliads.

Since then, Selby Gardens has become a leading botanical garden in the United States and is internationally recognized. Through research and education, we are committed to plant conservation and ensuring everyone we reach understands that plants are essential to all life on earth.

While our work has progressed, our 15-acre bayfront property found itself in need of the infrastructure a public botanical garden requires, especially to protect our collections from future sea level rise. As Selby Gardens moves into the future, we envision an improved master site plan that connects our more than 200,000 visitors each year with the important work conducted by our professional staff. These improvements move our scientific and living collections out of flood zones and into secure structures using the latest green building technology. We are proud that this plan upholds our past and also ensures Selby Gardens' future, which has significant scientific importance.

This thought-out plan also allows us to expand on Marie's original gift to the community at the highest level.

Of the \$42.5 million needed to implement the first phase of the master site plan, \$21.8 million has already been raised. The goal for funding the overall 10-year Master Plan is \$92 million, with \$72 million to be directed toward capital costs and the balance to be directed toward endowment and operational needs. Trustees, leadership donors and co-chairs Jean Weidner Goldstein, Cornelia Matson, and Pauline Wamsler are leading the campaign.

Visit selby.org for more information.



Jean Goldstein Welcome Center



Live Oak Arrival Court



Rooftop Restaurant



(1) Sky Garden and Parking Terrace Powered by Barancik Foundation

(2) Jean Goldstein Welcome Center

(3) Steinwachs Family Plant Research Center

- Elaine Nicpon Marieb Herbarium and Laboratory

- Nathalie McCulloch Research Library

(4) Palm Avenue Promenade (preserved, pedestrian-only)

(5) Payne Mansion/Museum of Botany & the Arts

(6) Michael's on the Bay

(7) Glass Houses

(8) Learning Pavilion

(9) Selby House/Garden Cafe

(10) Ann Goldstein Children's Rainforest Garden

(11) Great Lawn

LIVING INSPIRATION FOR SUSTAINABILITY

Selby Gardens will become a global model for horticultural display, botanical studies and green building technology:

- The plan will increase the botanical garden's green space by 50 percent, protect Selby Gardens' scientific collections, which are the best of their kind in the world, from future sea level rise and allow for expanded educational outreach.
- Selby Gardens will be the first botanical garden complex in the world boasting a Net Positive energy rating.

- A rooftop edible garden will provide fresh produce for the Sky Garden restaurant, the first Certified Net Positive Energy Restaurant in the world.

The Net Positive Energy rating is awarded by the Living Building Challenge, a green building certification program and sustainable design framework administered by the international Living Futures Institute. A net positive energy rating means that the buildings will generate more energy than they consume.

PRESERVING OUR HISTORY

As we prepare for our sustainable future, Selby Gardens will responsibly preserve and steward the historical treasures entrusted to us:

- A significant renovation of the Selby House, a recent recipient of a local historical designation by the City of Sarasota, is underway thanks to support from the William G. and Marie Selby Foundation.
- The historic Augusta Block that lines Palm Avenue will be preserved and become a pedestrian-friendly promenade.

- Key tenets of the Sarasota School of Architecture will be visible in all new construction.
- Future phases will focus on improving the Payne Mansion, which has served as the home of our Museum of Botany & the Arts since 1979, is on the National Register of Historic Places, and recently received a local historical designation by the City of Sarasota.
- Selby Gardens is pursuing a site-specific zoning district with the City of Sarasota that ensures this area will remain a botanical garden with context sensitive design in perpetuity.

For more information about the campaign, visit selby.org.

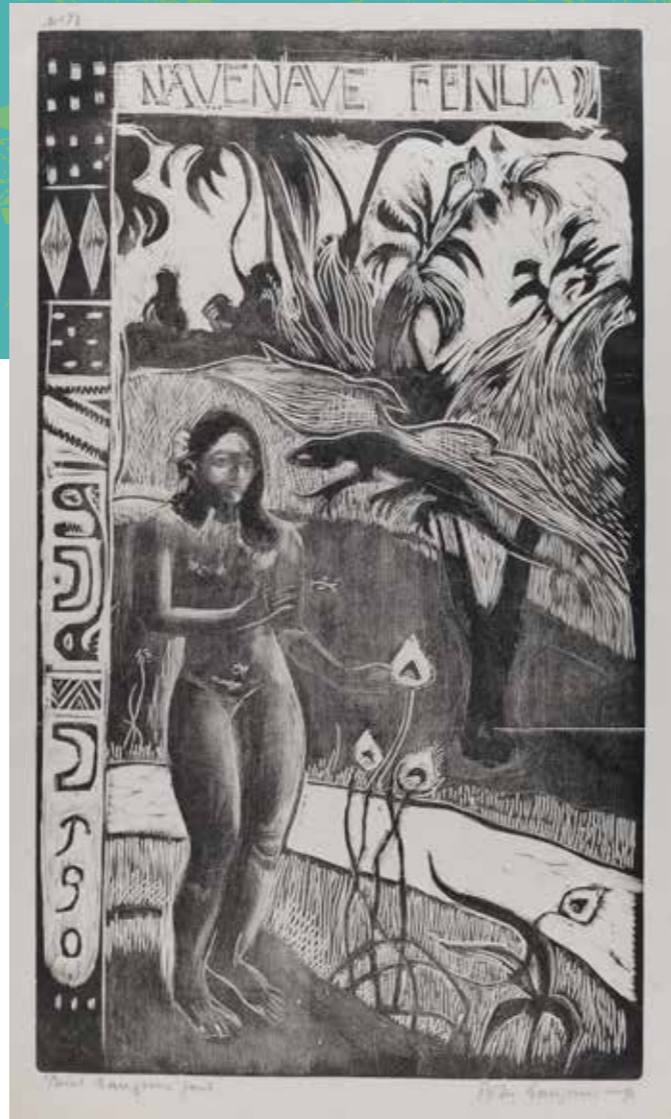
"GAUGUIN'S Paradise"

Dr. Carol Ockman, Ph.D.

CURATOR-AT-LARGE, SELBY GARDENS,
AND THE ROBERT STERLING CLARK PROFESSOR
OF ART AT WILLIAMS COLLEGE

The name Gauguin instantly conjures a paradisiacal image of Tahiti—lush vegetation, a brilliant palette of saturated reds and yellows infused with moody purples and fuchsias, often populated by block-like, dark-skinned figures in static poses. But Paul Gauguin (1848-1903) produced an enormous body of ground-breaking prints that were in constant dialogue with his better known paintings.

Gauguin: Voyage to Paradise focuses on Gauguin's paradigm-shifting woodcuts and lithographs. Culled from far-flung collections including the Israel Museum, Smith College, Bates College, and local private collectors Keith and Linda Monda, these works on paper explore Gauguin's abiding search for a primitive Eden untouched by the ills of the modern metropolis, a goal shared for centuries by countless explorers, colonizers, and artists. Counter to commonly held perceptions, Gauguin's quest for a purer, more natural place began in the province of Brittany in his native France 15 years before he first sailed to Tahiti.



Nave Nave Fenua, Paul Gauguin © The Israel Museum, Jerusalem by Elie Posner

The Gardens' exhibition will chart Gauguin's elusive search through his prints of Brittany, Martinique, and Tahiti, highlighting the essential role of natural motifs in achieving the artist's vision of the exotic. The Museum of Botany & the Arts will also feature archival photographs of Tahiti by colonial photographer Charles Georges Spitz (1857-1894), historic maps of Tahiti produced by explorers, historical photos of the colonial pavilions of the

Universal Exhibition of 1889 in Paris, and other ethnographic sources that shaped Gauguin's vision before he even set foot in Tahiti.

In the Tropical Conservatory, and throughout the Gardens, guests will encounter the colors of Gauguin's well-known palette represented by flowering plants and lush, tropical displays of palms, ferns and fruit trees. In 1891, Gauguin received funding from France's Ministry of Public Education and Fine Arts "to go to Tahiti to study and ultimately paint this country's costumes and landscapes." Gauguin developed a method for this. "In each locale I need a period of incubation, to learn each time the particular character of the plants, the trees—of the whole landscape."

His interest was in the landscape, the culture, and customs of the native peoples. In his fascination with the island inhabitants' use of the local flora to heal, he wrote about the Tahitian practice of using "the nuts and leaves of the autura tree and the pods and flowers of the hotu tree for medicinal purposes." The lush landscapes, thus serve as an ethnography, unlocking the customs of each culture, making them more than mere picturesque backdrops.

Our understanding of Gauguin is heavily inflected by the mythic persona he constructed for himself—a blend of self-described savage, Christian martyr, and outsider—which draws heavily on his storied biography and writings. Born in Paris, Paul Gauguin was one-eighth Peruvian and lived a luxurious life with his Spanish-Peruvian family in Lima for years as a child, then as a well-heeled French schoolboy, before becoming a merchant seaman and serving in the navy. Reclaiming bourgeois life as a stockbroker in Paris, he married and had five

children with the Danish Mette Gad, with whom he eventually separated to claim his freedom as a full-time artist.

Gauguin embraced woodcuts because they enabled simple and direct expression, spearheading the revival of the medium in early 20th century Expressionist works by artists such as Ernst Ludwig Kirchner and Emil Nolde. Characterized by stylized forms that were intended to represent peoples and cultures as more "natural" than their cosmopolitan European counterparts, their look—willfully vague, prone to darkness, unfinished, replete with the markings of his woodcutting tools—evinces Gauguin's reputed desire to "go native." The vanguard qualities of his imagery—exaggeratedly simplified, flat forms, either vibrant color or stark oppositions between light and dark—are renowned. However, the artist's imposition of Western stereotypes on his subjects—the naive and pure lifestyle of rural inhabitants and the greater carnal freedom and "natural" inclination toward idleness in exotic island cultures, has come in for criticism.

Highlights in the museum include *Manao Tupapau* (She Thinks of the Ghost and the Ghost Thinks of Her) and *Nave Nave Fenua* (The Land of Delights), 1894-95, remarkable for their evocation of tropical



Above: Anon., Iles Sous Le Vent (Océanie Française), ca. 1900, postcard. Collection of Elizabeth Childs

Right: Anon., Titi & Mata, ca. 1900, printed by Frank Homes, Papeete, postcard, 5.5x3.5 in. Collection of Elizabeth Childs



vegetation but also for the ways they suggest cultural difference. Both depict Teha'amana, the artist's model during his first two years in Tahiti. With its compelling contrast between the dark, fetal figure and the glowing bark cloth sheet on which she lies, *Manao Tupapau*, in the artist's account, depicts the nighttime terror occasioned by the spirit of death. The phosphorescent flowers in the background and the diminutive specter itself dramatize the figure's vulnerability as *Nave Nave Fenua* does. In the artist's Tahitian version of Eve in the Garden of Eden, Gauguin substitutes a twig or grass stem, perhaps to pollinate the nearby flower, for the proverbial apple and a winged lizard, regarded in Polynesia as fearful spirits of ancestors or divinities, for the serpent.

A short list of Gauguin's natural motifs in his Tahitian works includes banana, coco palm, breadfruit, ironwood and mango trees, and possibly peacock plants, caperbushes, pandanus leaves as well as vanilla orchid, hisbiscus, and hutu flowers. Inasmuch as he prefers suggestiveness to botanical accuracy, identification can be challenging, perhaps even beside the point. As the artist explains:

A flower does not consist only of what we see, the obvious and immediate. The artist who wishes to understand her reality must then re-create its essence. In other words, he must follow her as she grows, from a seed until fully bloomed. Only he has the right to deform the visible features of objects in order to express his vision.

(Charles Morice in Chapter 1 of *Paul Gauguin, Noa Noa*)

In other words, Gauguin's creative process favors the imagination over the seen.

Interpretations of Gauguin vary widely: Scholars reproach him for being a sexual imperialist—giving form to male erotic fantasies and imperialist narratives, which, in turn, crystallized such scenarios in the Western imagination. Other scholars vaunt Gauguin's hybridity, citing his position as a European man open to indigenous practices—religious and linguistic—and thus able to blur traditional oppositions between East and



Manao Tupapau (The Spirit of the Dead Watching), Paul Gauguin, 1894-1895 ©The Israel Museum, Jerusalem by Elie Posner

West. Still others signal his frequent blending of Southeast Asian cultures, such as Cambodia and Indonesia, as a sign of Western myopia. Undisputed, however, is his position as a modern artist, allied with the Symbolists, who depended on the art world of Paris for his livelihood and reputation.

Gauguin's art and life were mired in the myth of an untouched paradise. If wanderlust was his passport, it could not secure his dream. The fantasy—at once seductive and, in the context of cultural difference, disturbing—was unrealizable.

Gauguin: Voyage to Paradise will be on view at Selby Gardens from February 10-June 30, 2019. A keynote lecture by the Curator will take place February 12. (see p. 9)

Sources:

Gauguin Paintings, Sculpture and Graphic Works at the Art Institute of Chicago, https://publications.artic.edu/Gauguin/api/epub/141096/140629/print_view

Gauguin's Challenge, ed. Norma Broude, 2018

Elizabeth C. Childs, *Vanishing Paradise: Art and Exoticism in Colonial Tahiti*, 2013

Stephen F. Eisenman, *Gauguin's Skirt*, 1997

Gauguin: Artist as Alchemist, ed. Gloria Groom, 2017

Nancy Mathews, *Paul Gauguin: An Erotic Life*, 2001

GAUGUIN-RELATED BOTANICAL BRIEFINGS & LECTURES

Participants are invited to join us in Michael's on the Bay (unless otherwise noted) to enjoy presentations on topics such as field work, ecosystems and exhibitions. **Lectures are**

held Noon-1 PM and are free to members and complimentary with admission (unless otherwise noted). RSVP required at selby.org.

FEBRUARY 12 • 11 AM – 1 PM

KEYNOTE LUNCHEON: GAUGUIN'S 'PARADISE'

WITH CURATOR-AT-LARGE, AND THE ROBERT STERLING CLARK PROFESSOR OF ART AT WILLIAMS COLLEGE, DR. CAROL OCKMAN

Dr. Carol Ockman, curator-at-large for Selby Gardens, presents an engaging presentation on Gauguin, accompanied by a delightful luncheon catered by Michael's On East.

Dr. Ockman will explore Gauguin's search for a primitive Eden untouched by the ills of the modern metropolis, a goal shared by countless explorers, colonizers, and artists for centuries. She locates Gauguin's quest for a purer, more natural place in the province of Brittany in his native France 15 years before he first sailed to Tahiti, then tracks it

MARCH 15 • NOON – 1 PM

GAUGUIN'S POLYNESIAN PARADISE

WITH DR. ELIZABETH CHILDS

This talk considers the role that the tropical milieu, Polynesian culture, and the French colonial played in Gauguin's art during the 1890s. In particular, we will explore how he was inspired by the nature and culture of Tahiti and the Marquesan Islands in his art of this time. We will look in particular at his representations of Tahitian individuals, customs, and landscapes, in an art that reimagined this distant "exotic" world with a Parisian audience in mind. Particular attention will be given to the flora

APRIL 10 • NOON – 1 PM

PLANTS OF THE SOUTH PACIFIC

WITH SMITHSONIAN BOTANIST DR. WARREN WAGNER

Dr. Wagner's talk will help connect Paul Gauguin to the plants of the South Pacific at the turn of the 20th century. Some of the most culturally and economically important plants of the South Pacific such as coconut, hibiscus, taro, bananas, sugar cane, breadfruit, and the charismatic Pandanus, or screw pine, exist in Selby Gardens. Many of these plants were introduced to the islands by Polynesian settlers from Southeast Asia and Taiwan. Our exhibition



© Steveheap | Dreamstime.com

SPONSORED BY:



to Martinique, Arles, and, after Tahiti, the Marquesas Islands. While Gauguin's works often highlight the abundant natural resources of these far-flung locales, they also raise complex questions about "going native."

Following her lecture, Dr. Ockman will invite **Mette Gauguin** to join her for a conversation. Mette is the great granddaughter of Gauguin and his wife, also called Mette. Mette Gauguin is a printmaker and lives in Oxfordshire, England.

Tickets: Members \$50, Guests \$75. Reserve your ticket at selby.org.



© Painless | Dreamstime.com

and fauna Gauguin represents, and to the ways he used tropical woods in his sculpture.

This botanical briefing is free of charge (paid admission to the Gardens is not required) thanks to the generous support of the Florida Humanities Council. Before or after the talk, guests are invited to visit all parts of the Gauguin exhibition.

Dr. Childs is the author of *Vanishing Paradise: Art and Exoticism in Tahiti*.



© Tomi Tenetz | Dreamstime.com

speaks to the migration of plants including "Tahitian" vanilla, a plant indigenous to the Americas and introduced to Tahiti in the mid-19th century, where it escaped into the wild and now forms a part of the indigenous flora and culture.

Dr. Warren Wagner is a Research Botanist & Curator at The Smithsonian's National Museum of Natural History. His forte is the native flora, ecosystems and conservation of the Hawaiian Islands.

The PLANTS of PARADISE

Paul Gauguin was intrigued by the everyday use of plants in the lives of native people, so the lush landscapes he encountered in the South Pacific were much more than picturesque backdrops to the artist. When landing in a new location, he focused on studying the plants and their relationship to the culture and native people.

Many of the plants Gauguin studied and incorporated into his paintings of "paradise" were consumed for nutritional and medicinal purposes.

During the *Gauguin: Voyage to Paradise* exhibition they will be integral parts of displays throughout the Gardens, evoking a voyage to French Polynesia. Complemented by authentic structures, handicrafts, and Polynesian fabrics, the plants will help visitors envision the paradise Gauguin encountered during his travels.

Here are a few of those plants that grow at Selby Gardens:



Vanilla tahitensis, or "Tahitian vanilla," is a member of the orchid or Orchidaceae family native to the Americas. In the mid-19th century it was introduced to Tahiti, where it is now an important part of the local flora.

A vine that grows on trees for support, it has zig-zag stems, narrow, elliptic leaves and yellowish-green flowers, which are followed by bean-like pods. As compared to the more widely grown *Vanilla planifolia*, the pods are shorter and broader, and its taste and fragrance are also distinctive.



Artocarpus altilis, or breadfruit, is a species of flowering tree in the fig or Moraceae family, with origins in the South Pacific. A high-yielding plant whose name derives from the interior texture and appearance resembling bread, a single tree can produce upwards of

200 cantaloupe-sized fruits.

Breadfruit is a multi-faceted plant having nutritional value as a common staple of the native diet. The timber is used for outriggers and homes and is a handsome plant for the tropical landscape.



Cocos nucifera, or coconut tree, is a member of the palm or Arecaceae family.

Coconut trees are a ubiquitous symbol of tropical islands. Originating in the region between India and Indonesia, their fruits were likely carried

by sea-faring traders throughout the tropics. They flourish close to the sea on low-lying land.

The inner flesh of the mature seed forms a regular part of the diets of many people in the tropics. Oil derived from the flesh is used worldwide for frying. The "meat" may also be grated and mixed with water to make coconut milk. The husk yields coir, a fiber used in ropes, mats, baskets and brushes; the fronds are used as clothing; and the trunks for construction.



Pandanus utilis, a member of the Pandanaceae family, is commonly referred to as the screw pine, yet its relationship to pine trees is distant. Its exact native range is unknown but it may have been spread through the Pacific Islands by early Polynesians.

Selby Gardens has two plants, a male and a female, the latter producing large, inedible fruit. The leaves are

boiled and used to complement flavors in Southeast Asian cooking. The flowering canopies are often top-heavy with linear leaves often used in Southeast Asia to create commercial goods such as mats.



Musa x paradisiaca, or banana trees, are members of the Musaceae family. Banana tree plants aren't trees, but rather perennial herbs that never produce hardened tissues in their stems. Gingers, heliconias, and bird-

of-paradise flowers are close relatives of bananas. They are in the same order, Zingiberales.

Banana trunks consist of multiple leaf stalks wrapped around each other. New leaves start growing inside, below the ground. They push up through the middle and emerge from the center of the crown. So does the flower cluster, which finally develops into a bunch of bananas.

The banana tree plant is one of the largest fruit crops in the world and has been part of the human diet since pre-recorded history. Banana trees thrive in every tropical region, but can also be grown in temperate climates of North America if protected from the cold.

GAUGUIN-INSPIRED CLASSES



Voyage to Paradise: Gauguin-Inspired Writing Retreat

March 8
10 am - 3 pm

Ready to take your own exotic voyage in Sarasota? This half-day writing retreat is inspired by the botanical imagery of the *Gauguin: Voyage to Paradise* exhibition and the beauty of the Gardens. As

Gauguin said, "I'd like to write the way I do my paintings, that is, as fantasy takes me, as the moon dictates." Writing exercises will be interspersed with time in the gardens for you to experience new inspiration as you learn to write like an artist. Join journalist/meditation instructor Gail Condrick for this special event. No prior writing experience is necessary. Bring a journal and a pen.

Instructor: Gail Condrick
Class fee: \$65 (Members \$55)
Collage Materials Fee: \$5 (pay instructor)

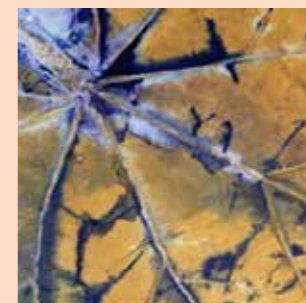


NEW! Tropical Tahitian Scenes!

March 26
10 am - 2 pm

Create a beautiful Tahitian scene with colorful tropical flowers, plants, and island features that evoke Gauguin's paradise. Paint along as the instructor demonstrates helpful tips for producing a successful watercolor

painting. Open to all levels.
Instructor: Carolyn Merenda
Class Fee: \$65 (Members \$50)



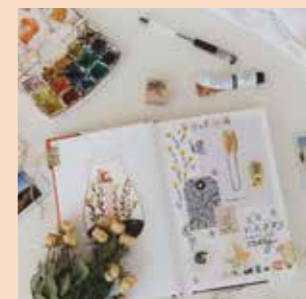
NEW! Print the Gauguin-Inspired Gardens

April 24 & 25
10 am - 3 pm

Draw on the incredible diversity of Selby Gardens' plants as your inspiration to design one of a kind nature prints in this two-day class. Learn exciting techniques to

transfer leaf and flower images onto both paper and fabric. Create natural art on clothing and linens the first day, followed by note cards and small botanical prints the next. Special emphasis will be placed on printing flowers. No previous experience is necessary.

Instructor: JoAnn Migliore Campisi
Class Fee: \$90 (Members \$75) each session
Materials Fee: \$15 (pay instructor)



Release Your Inner Gauguin - Writing & Collage Retreat

April 12
10 am - 2 pm

Get ready to release your Inner Gauguin through the inspiration of the Gardens, the Voyage to Paradise Exhibition, creative writing and collage. Let your inner artist, traveler, and visionary

speak through guided writing exercises and journaling. Tour the exhibition and the Gardens and turn your reflections into your own artwork as you create a collage to access your subconscious and decode your own symbolic messages. Join journalist/meditation instructor Gail Condrick for this special event. No prior writing experience is necessary; just bring a journal and a pen. Materials provided to create collages.

Instructor: Gail Condrick
Class Fee: \$65 (Members: \$55)
Collage Materials Fee: \$5 (pay instructor)

More classes can be found on pages 20-22.

EXCELLENCE

for Events & Dining with

The award-winning Michael's On East organization is privileged to serve as the official culinary partner for Marie Selby Botanical Gardens.

MICHAEL'S
ON EAST

Whether you seek an elaborate garden wedding, stunning backdrop for a business function, or a modern affair under the stars, the Gardens provide you an ideal one-of-a-kind oasis for a variety of private events.

Selby Gardens is divided into two rental locations, which include ceremony, cocktail hour, and

reception areas for weddings, as well as the perfect pre-function and presentation or reception space for corporate and non-profit events. As the exclusive caterer for all events celebrated on the grounds as well as the Michael's on the Bay waterfront ballroom, the Michael's team has shared a few photos to help inspire your next affair!



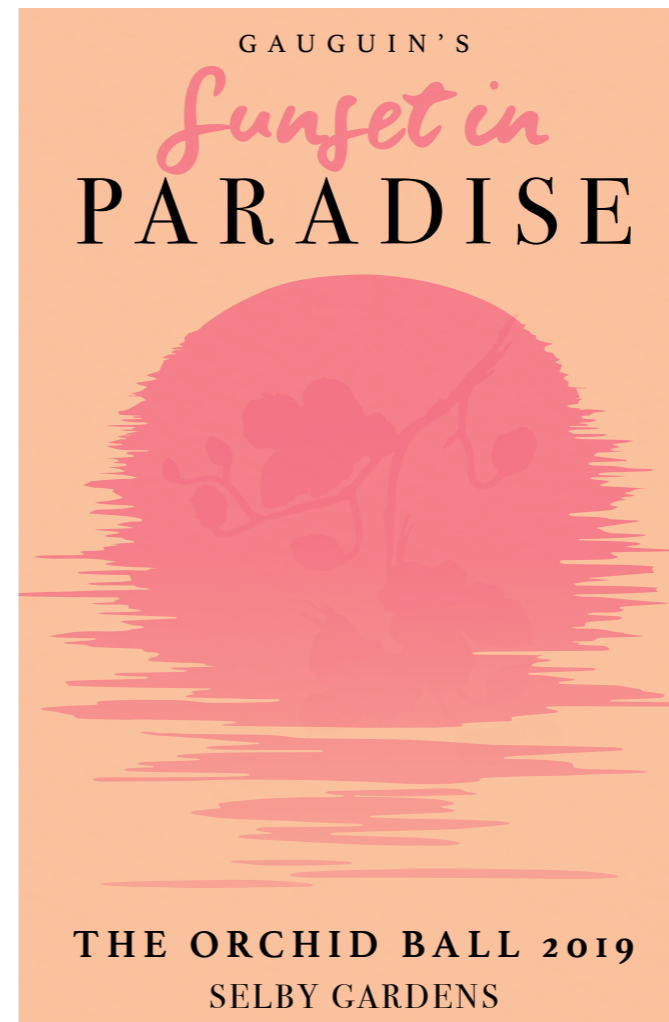
Michael's co-proprietors Michael Klauber and Philip Mancini, as well as their entire team, are also thrilled about the Gardens' Master Site Plan and the world's first certified net-positive energy restaurant, currently in planning and development stages. Stay tuned for more details about the

transformative culinary experiences led by Michael's On East at Selby Gardens!

Learn more about hosting an event at Selby Gardens by contacting Amy Allen at Michael's On East: 941-366-0007, ext. 238 • amy.allen@bestfood.com.


selby house café
by **MICHAEL'S**
ON EAST

Be sure to stop into the Selby House Café by Michael's On East during your next visit to the Gardens! In addition to the popular menu featuring seasonal sandwiches and salads, grain bowls, and baked goods prepared by Michael's in-house pastry shop, tropical dishes inspired by *Gauguin: Voyage to Paradise* will be debuting this season! For groups touring the Gardens, keep in mind a special group menu and other accommodations are available from the Café when making advance reservations.



THE ORCHID BALL 2019

SATURDAY, FEBRUARY 9

HOSTED BY:

LIEBE GAMBLE • KATIE HOLLINGSWORTH
ASHLEY KOZEL • EMILY STROUD

Marie Selby Botanical Gardens' 2019 Orchid Ball, Gauguin's Sunset In Paradise, will take place on the Gardens' Great Lawn.

Please consider participating as a sponsor of the Orchid Ball, where you will have the honor of experiencing the opening night of the exhibition *Gauguin: Voyage to Paradise* with an exclusive preview of the dynamic horticultural interpretations of his art within our conservatory and grounds.

The proceeds from the Orchid Ball support Selby Gardens' community education programs, international research, conservation, and beautiful world-class horticulture displays. Your support is paramount to the sustainability of Marie Selby Botanical Gardens.

If you would like to reserve sponsorships or tickets to the Orchid Ball, please visit selby.org/orchidball or call 941-248-3585.

GARDEN MUSIC SERIES

The Garden Music Series is proud to present an eclectic variety of local and international musical artists who perform music of nearly every style and genre. Guests enjoy a world-class outdoor concert experience along with beautiful views and relaxing walks through the Gardens. Grilled foods will be available for purchase from the Michael's on East grill along with beer, wine, Bloody Marys, and mimosas. B's Cool Treats will have their cart on-site with a wide assortment of frozen treats. The events are on the following Sundays from 1 to 3 p.m.

FEBRUARY 24: Chuchito Valdés

MARCH 10: ensembleNEWSRQ

APRIL 14: The Hydramatic

MAY 19: Alexis Cole

JUNE 16: Ari and the Alibis

FREE for members and with general admission.

SPONSORED BY: **THE WESTIN**
SARASOTA



RAINFOREST MASKS of COSTA RICA

JANUARY 6-27

OPENING RECEPTION:

JANUARY 5 • 4:30 – 6:30 PM

(Includes Lights in Bloom admission)

\$35 for guests, \$25 for members, tickets available at selby.org

These artfully carved and painted balsa wood masks are living testimony of the resilience, passion for life, and collaborative spirit of the Brunca Artist Collective. The remarkable artists in this exhibit have spent more than 30 years perfecting their talent and their exuberant art speaks for itself.

Each step in the creation of an authentic Boruca Mask requires extraordinary skill. First the artist envisions and draws a new design onto the balsa or cedar log. Then a carver interprets and shapes the flat drawing into a 3-D mask. Finally, an artist paints it with bold acrylic colors to bring the mask to life. The 15 years of exhibits at Selby Gardens and a growing number of art collectors have been instrumental in allowing these artists to reach new creative heights.

SPONSORED BY: **Lucuma Designs**



JANUARY 9 • NOON – 1 PM

BORUCAN ARTISTS OF TODAY AND THEIR EVOLVING ART

WITH ALESSANDRA BRAVO AND DON BLACKOWIAK OF LUCUMA DESIGNS

Come closer to learn about the inspiration and dreams of the artists behind the Rainforest Mask exhibit at Selby Gardens. Don and Alessandra will share highlights from their recent visit to the village where they interviewed and filmed artists, including Esteban Morales Lazaro and Marcos Rojas Morales,



who will be in attendance at the lecture. Also learn how the efforts to incorporate Fair Trade principles within the artist collective are progressing.

FREE to members and with general admission, at Michael's on the Bay. Reserve a seat at selby.org.



Wine & design



EVENT CO-CHAIRS: Nikki Sedacca and Montana Ross Taplinger

SERIES CHAIRS: Jean Weidner Goldstein, Teri A Hansen, and Margaret Wise

SERIES SPONSORS:



Andrew & Judith Economos Charitable Foundation



MARCH 8 • GARDEN TO PLATE WINE DINNER

CHAIRS: Nora & Billy Johnson and Jenny & Ken Pendery

Join us in the Gardens for a casually-elegant, outdoor Garden to Plate dining experience. One continuous table will be set for guests on the Great Lawn where you will enjoy fine wines selected by Michael Klauber that complement an extravagant, multi-course dinner personally designed by Phil Mancini.

\$200 per person

SPONSORED BY: **PNC WEALTH MANAGEMENT**

WINE & DESIGN

MARCH 13 • TROPICAL PARADISE featuring So Staged

Join us for Wine & Design floral design workshops, a hands-on date for you and your friends. Our instructors will provide a flattering selection of flowers and guide you through the construction of your very own fresh floral arrangements while our partners at Michael's on East keep the wine and fromage flowing.

\$75 for guests, \$65 for members

APRIL 21 • EASTER BRUNCH

Celebrate Easter Sunday with a buffet brunch, a leisurely egg hunt, games, children's activities, and family photos with the Easter Bunny, all overlooking beautiful Sarasota Bay. Three seatings are available at Michael's on the Bay. A springtime menu includes a carving station, omelets made to order and a dessert bar.

\$80 for guests, \$70 for members

\$30 for children ages 4-11, free for children 3 and under

MAY 1 • LUNCH IN THE GARDENS: FLOWERS AS ART IN PARADISE with Ian Prosser

Ian Prosser is recognized as one of the top floral and event designers in the world today. He has worked for Queen Elizabeth and a long list of celebrity clientele. He was selected by the Society of American Florists as the floral designer for the 1993 inauguration of President Bill Clinton and both inaugurations of President George W. Bush.

Ian is based in Tampa and has two companies; Botanica International and Ian Prosser Productions. He has an active worldwide speaking and design schedule, including design work for many signature private events at Marie Selby Botanical Gardens.

Celebrate May Day at the Gardens and join us for a delightful luncheon and presentation featuring highlights of Ian's career in floral and event design. Ian will present a veritable floral design master class incorporating flowers from paradise as he connects his presentation and floral demonstration to the Gauguin exhibition.

Groundworks will have an on-site boutique. See page 23.

\$150 for guests, \$75 for associates. Tables starting at \$2,500.

MAY 13 • MOTHER'S DAY BRUNCH

Sweeping views of Sarasota Bay provide the perfect backdrop for honoring mothers at Selby Gardens. With an exquisite buffet provided by Michael's on East, mothers and their families are sure to have a delightful day. Three seatings are available. Fun games, children's activities and family photos are included.

\$80 for non-member adults, \$70 for members

\$30 for children ages 4-11, free for children 3 and under

RESERVE YOUR TICKETS AT SELBY.ORG

Selby Gardens' AWARD WINNING supporters

Selby Gardens is grateful for the support of donors and volunteers whose dedication to the Gardens' mission and vision does not go without notice, both here at the Gardens and in the community-at-large.

Join us in congratulating the following for their sustained commitment to Selby Gardens:

Jean Weidner Goldstein



In recognition of her long-standing service and philanthropy to the Sarasota community, Jean Weidner Goldstein received the Cultural Champion-Arts Leadership Award presented by the Arts & Cultural Alliance of Sarasota County at a celebration on October 22, 2018. Jean's impact on Sarasota's cultural community is legendary.

A Trustee of Marie Selby Botanical Gardens, Jean has been responsible for important contributions in the Gardens' history. One of her key contributions has been her role in establishing the Jean and Alfred Goldstein Exhibition Series. The first two Goldstein Exhibitions, *Marc Chagall, Flowers, and the French Riviera: The Color of Dreams* and *Warhol: Flowers in the Factory*, received international acclaim, including coverage in *The New York Times*, *USA Today* and *The Financial Times (UK)*, and have drawn tremendous interest from the world's top gardens. The Goldstein Exhibition Series has made a game-changing impact on visitation and revenue

and established Selby Gardens as a national and international leader in creating world-class horticulture and art exhibitions. Jean also was instrumental in the creation of the Ann Goldstein Children's Rainforest Garden, and the new Welcome Center to be built at the Gardens as part of the Master Site Plan will bear her name. Donations from her late husband, Al Goldstein, were among the earliest gifts to these campaigns and served to inspire other leadership level gifts.

Jean has made a true difference and serves as a role model for others. Further, Jean's impact on Sarasota's cultural community is remarkable. She is a founder of the Sarasota Ballet and its Dance: The Next Generation program; co-Founder of Designing Women Boutique; and past board member of Sarasota Opera, Asolo Repertory Theatre, and the Arts & Cultural Alliance of Sarasota County.



Long time Selby Gardens volunteer Bob LaRoe was recently honored with the title of "2018 Outstanding Volunteer" by the Florida Association of Museums (FAM). At the age of 88, Bob has contributed almost 9,000 volunteer hours to the Gardens and has been a Conservatory guide and Adult Tour Group leader since 1992.

Bob LaRoe wanted to be a botanist from a young age, and every free moment was a chance to study and explore nature. Eventually he became a teacher of carpentry at a technical college. Coupling these talents, Bob is known for his ability to explain the workings of orchids and other tropical plants in a way that is understandable and relatable. In addition to his love of teaching and plant life, he actively studies botanical Latin. To many staff members and volunteers' surprise, he believes everyone should have that skill. As Bob says, "Latin is universal, and it allows me to talk with visitors to the Gardens from all over the world."

Every Friday morning Bob can be found at his post in the Tropical Conservatory with his extendable

Bob LaRoe

pointing stick, greeting visitors and sharing plant facts. As guests gather around to listen, Bob retrieves plant pictures from his shirt pocket to better explain details about the Conservatory and the plants inside. One of his favorite ways to surprise visitors is by pointing out the orchids with beautiful floral scents because sometimes people believe orchids do not have a scent.

For Bob, working in the Conservatory is more than discovering new plants. "My favorite part of working at the Gardens is all the interesting people I get to meet and talk to," he says.

"Bob has been a permanent and respected voice in the Tropical Conservatory, and if the Conservatory had a narrator, it would be Bob. His tall commanding stance and his trademark conductor's baton captures your attention as he passionately speaks about the plants," according to Angel Lara, Director of the Gardens' Glasshouse Collections. This sharing of knowledge and information all happens while Bob is talking and getting to know each guest personally.

Selby Gardens volunteers like Bob make our "living museum" come to life and add a personal touch of knowledge that guests can relate to and take with them. This may be the reason why this is the second consecutive year that Selby Gardens has received the Outstanding Volunteer Award by FAM. To honor Bob's long standing commitment, Selby Gardens staff nominated him for this opportunity to show their appreciation for his support, knowledge, and sharing of the mission of Selby Gardens with our community and beyond.

Volunteers are the heart of Selby Gardens and play a vital role in our mission of research, conservation, and horticultural display. Outnumbering staff by more than 15 to 1, volunteers add the equivalent of more than 32 full-time

workers to the Selby Gardens workforce each year. They continually tell us that they get back much more than they give: new friends, new interests, and opportunities to learn and grow in some of Sarasota's most beautiful surroundings.

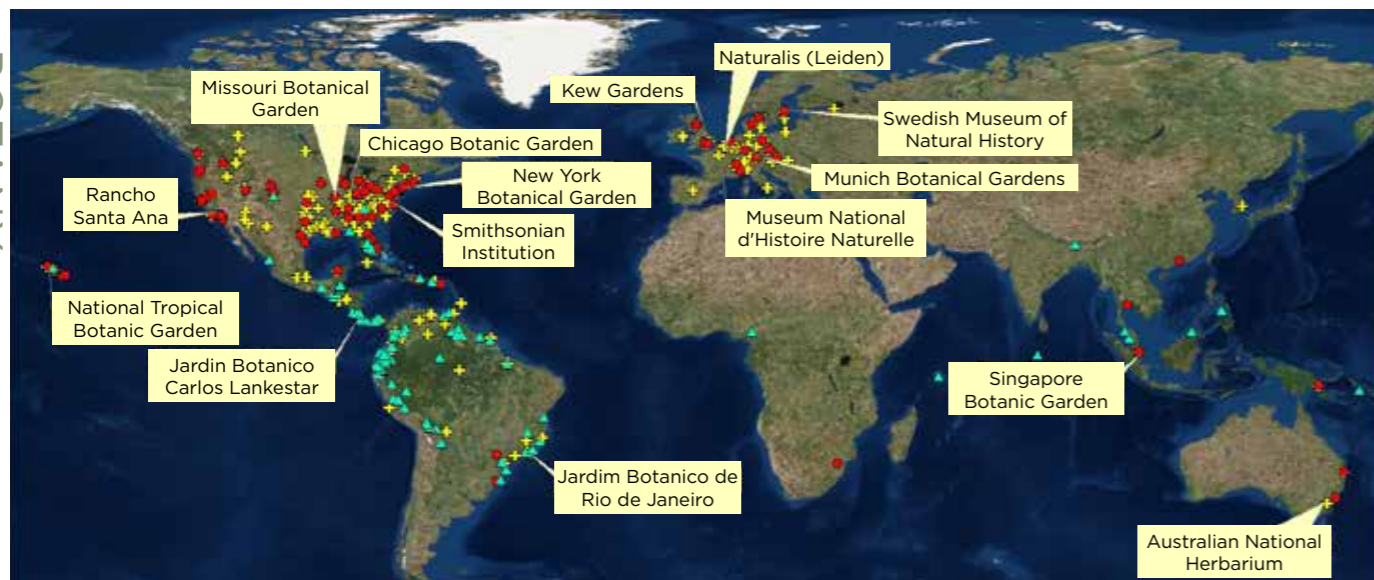
TYPES OF VOLUNTEER POSITIONS

- Mansion Docent • Tour and Conservatory Guides
- Welcome Center/Gift Shops • Ask Me Cart
- School Group Guide • Kids Corner
- Walk & Talk Guides • Research Assistant
- Horticulture Assistant • Special Events
- Teen Camp Counselor

HOW TO GET STARTED

Simply visit:
www.selby.org/get-involved/volunteer/
for details and upcoming orientation dates.

Questions? Call 941-366-5731 x227
or email volunteer@selby.org.



▲ Expeditions (217 Localities) + Herbarium Exchange (198 Institutions) ● Live Plant Exchange (120 Institutions)

THE GARDENS' GLOBAL REACH

Collaboration with researchers worldwide aims to preserve plant diversity

Selby Gardens is a local treasure to Sarasota residents and visitors, but many may not realize that its impact spans the globe. The Gardens' botanists have conducted research expeditions in more than 200 locales, exchanged herbarium specimens with 198 institutions and swapped live plants with 120 institutions around the world. Now, thanks to a grant from the National Science Foundation (NSF), the Gardens' scientific staff will be able to digitize a significant portion of its collection of preserved epiphytes and make them easily accessible to the global scientific community.

"Among botanists, it is widely known that Selby Gardens has the best scientifically-documented collections of orchids and bromeliads," says Jennifer O. Rominecki, President & CEO of Selby Gardens. "Through this grant we will be able to share this vast knowledge with many more individuals and institutions worldwide."

Selby Gardens' NSF grant is part of a massive effort to digitize herbarium collections of universities, natural history museums and botanical gardens throughout the United States. A global network called IDigBio is the clearinghouse to receive the millions of digitized specimens.

The NSF project is called the Endless Forms Thematic Collection Network, a group of U.S. herbaria that have significant collections of certain types of plants including epiphytes, succulents and

carnivorous plants. Selby Gardens, invited to join the team because of its significant epiphyte collection, will digitize 52,000 specimens for the network, which has a goal of digitizing two million specimens in three years.

"Anyone will be able to go in and see where the specimens are found on earth, both in herbaria where the specimens are maintained as well as where they occur in nature, so we will be able to paint a much more complete picture of plant diversity and distribution," says Bruce Holst, Selby Gardens' Vice President for Botany.

Beyond digitization, the project encompasses full databasing, capturing all the information from the labels, and includes geo-referencing for specimens lacking coordinates. "So when it's done, you'll be able to map out two million specimens," Holst says. "For example, we will have an incredible map of where all the bromeliads grow." Care will be taken to protect the locality information for rare species.

Sixteen other top tier botanical research institutions are involved, including The New York Botanical Garden, Harvard University, Missouri Botanical Garden and the Field Museum of Natural History. Selby Gardens is one of four botanical gardens chosen to participate. The Gardens' grant will fund a one-year temporary position plus imaging equipment and travel funds to attend two conferences.

"This project demonstrates the collaborative nature of the work," Holst says. "No one institution can do it all."

THE ULTIMATE OBJECTIVE IS PRESERVING THE DIVERSITY OF THE PLANT KINGDOM

"The overarching effort by Selby Gardens and by other institutions that study plant diversity and distribution is to document the natural distribution of a species," Holst says. "Years from now when

we measure it again, we can see if there have been significant changes."

This is critical work as climate change affects where particular plants will grow. "Knowing a plant's natural distribution will help us manage the plant and help keep it from going extinct," Holst says, "because we can't keep every plant in a botanical garden." In fact, less than 10 percent of all the flora in the world are represented in the world's botanical gardens.

FAMILY TOGETHERNESS



Family Togetherness Program introduces children to nature with support from the Community Foundation of Sarasota County

The Community Foundation of Sarasota County recently honored Marie Selby Botanical Gardens with a \$50,000 grant in support of the Gardens' programs and events. This includes the Family Togetherness Program, which gives vulnerable youth from Title I schools the opportunity to visit the Gardens and interact with nature in a fun way.

The Family Togetherness program was piloted with the Community Foundation in 2017, and in its first year more than 1,200 children and families attended the events. The Community Foundation has tripled its support this year to allow more families to experience the program. The students are identified by school administrators and non-profit, human service organizations. The opportunity allows them to be immersed in nature through educational

and cultural experiences at family-friendly Selby Gardens' events, such as Spooktacular, Lights in Bloom and Family Saturdays in Paradise to be held monthly starting in February 2019.

Additionally, the grant will support Gauguin Nights, a series of nighttime viewings of the exhibition, along with inspired performances by some of Sarasota's arts and cultural organizations, and the Orchid Ball. The support from the Community Foundation of Sarasota County is integral to the further growth of these programs and events, and the sharing of these opportunities with the community.

FAMILY TOGETHERNESS PROGRAM ALSO SPONSORED BY:



Michael & Marcy Klein

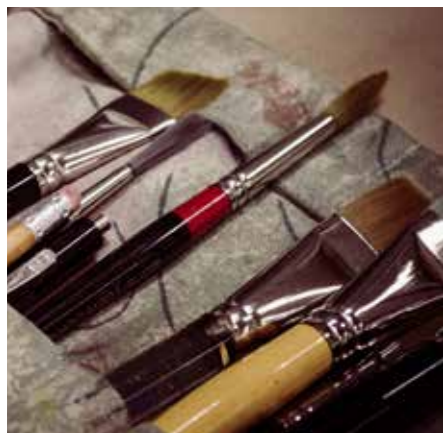
COMMUNITY CLASSES

NOTE: Please see page 11 for Gauguin-related classes.

ART CLASSES

Borucan Mask Painting

Jan 7
10:30 am – 2:30 pm
 Class Fee: \$55 (Members \$40)
 Materials Fee: \$35 – \$50 per mask (pay instructor)



Advanced Watercolor

Session I: Jan 14, 21 & 28
Session II: Feb 4, 11 & 25
10:30 am – 2:30 pm
 Instructor: Carolyn Merenda
 Class Fee per Session: \$140 (Members \$125)

Intermediate Watercolor

Session I: Jan 8, 15 & 22
Session II: Feb 5, 12 & 26
Session III: Mar 5, 12 & 19
Session IV: Apr 9, 16 & 23
10 am – 2 pm
 Instructor: Carolyn Merenda
 Class Fee per Session: \$140 (Members \$125)

NEW! Visions/Memories Collage

Jan 17
10 am – 3 pm
 Instructor: Marilyn Shelley
 Class Fee: \$65 (Members \$50)
 Materials Fee: \$15 (pay instructor)

Gelli Plate Botanical Printing

Jan 18
10 am – 3 pm
 Instructor: JoAnn Migliore Campisi
 Class Fee: \$65 (Members \$50)
 Materials Fee: \$5 (pay instructor)

NEW! Watercolor Workshop for Beginners

Jan 23
10 am – 2 pm
 Instructor: Carolyn Merenda
 Class Fee: \$65 (Members \$50)

Sumi-e + Color

Jan 24 & 25
10 am – 3 pm
 Instructor: Marcy Chapman
 Class Fee: \$105 (Members \$90)
 Materials Fee: \$15 (pay instructor)

Rivers, Mountains & Waterfalls in Watercolor

Jan 29
10 am – 2 pm
 Instructor: Carolyn Merenda
 Class Fee: \$65 (Members \$50)

Print the Gardens

Jan 31 & Feb 1
10 am – 3 pm
 Instructor: JoAnn Migliore Campisi
 Class Fee: \$90 (Members \$75) each session
 Materials Fee: \$15 (pay instructor)

Marie Selby Botanical Gardens offers a wide variety of classes taught by experts in their field. Whether you want to brush up on your watercolor skills or create a scrapbook, get your hands dirty planting orchids or improve your photography, or even if you just want to start your day with relaxing yoga, there's a class for you.

NEW! Botanical Illustration: Flowers & Their Features

Feb 8
10 am – 5 pm
 Instructor: Olivia Braid
 Class Fee: \$120 (Members \$95)
 Materials fee: \$5 (pay instructor)

Zen Watercolor Workshops

One-Day Workshops: Feb 14, 15 or 16
10 am – 1 pm
 Instructor: Deborah Ross
 Class Fee per Session: \$65 (Members \$50) each

Amazing Animals and Flowers in Sumi-e

Feb 18 & 19
10 am – 3:30 pm
 Instructor: Frederica Marshall
 Class Fee: \$160 (Members \$140)
 Materials Fee: \$15 (pay instructor)



NEW! Gong Bi

Feb 21 & 22
10 am – 3:30 pm
 Instructor: Frederica Marshall
 Class Fee: \$160 (Members \$140)
 Materials Fee: \$15 (pay instructor)



NEW! Sketch Your Life! An Introduction to Sketchbook Journaling

Feb 27 & 28
10 am – 4 pm
 Instructor: Leslie Fehling
 Class Fee: \$215 (Members \$195)
 Materials fee: \$20 (Pay instructor)

Eco-Printing Flowers and Leaves

Mar 1
10 am – 4 pm
 Instructor: Sandy Frick
 Class Fee: \$75 (Members \$65)
 Materials Fee: \$20 (pay instructor)

Beginning Watercolor

Session I: Mar 4, 11 & 18
Session II: Apr 8, 15 & 22
10:30 am – 2:30 pm
 Instructor: Carolyn Merenda
 Class Fee per Session: \$140 (Members \$125)

NEW! Artful Bamboo-an Asian Approach

Mar 6 & 7
10 am – 3 pm
 Instructor: Marcy Chapman
 Class Fee: \$90 (Members \$70)
 Materials Fee: \$45 (Pay instructor)

NEW! Create a Journal with Gelli Plate Prints

Mar 28
10 am – 3 pm
 Instructor: JoAnn Migliore Campisi
 Class Fee: \$65 (Members \$50)
 Materials Fee: \$10 (pay instructor)

NEW! Botanical Illustration: Composite Flowers & Their Features

Mar 29
10 am – 5 pm
 Instructor: Olivia Braid
 Class Fee per Session: \$120 (Members \$95)
 Materials fee: \$5 (pay instructor)

Capture Nature with Alla Prima Painting

Apr 10
10 am – 1 pm
 Instructor: Joyce Ely Walker
 Class Fee: \$65 (Members \$50)

Everything's Coming Up Roses!

Apr 29
10:30 am – 2:30 pm
 Instructor: Carolyn Merenda
 Class Fee: \$65 (Members \$50)

HEALTH & DISCOVERY



Yoga in the Gardens

Session I: Jan , 14, 21, 28S
Session II: Feb 4, 11, 18 & 25
Session III: Mar 4, 11, 18 & 25
Session IV: Apr 1, 8, 15 & 22
10 – 11 am
 Instructor: Michelle Roy
 Class Fee per Session: \$75 (Members \$55)

Yoga II in the Gardens

Session I: Jan 9, 16, 23, 30
Session II: Feb 6, 13, 20 & 27
Session III: Mar 6, 13, 20 & 27
Session IV: Apr 3, 10, 17 & 24
9 – 10 am
 Instructor: Michelle Roy
 Class Fee per Session: \$75 (Members \$55)

Winter Yoga Pass

Valid Jan 7 through Apr 24, 2019
 Instructor: Michelle Roy
 Pass Fee: \$150 (Members \$110)

Dancing in the Gardens

Session I: Feb 1, 8, 15 & 22
Session II: Mar 1, 8, 15 & 22
Session III: Apr 5, 12, 19 & 26
9 – 10 am
 Instructor: Kathy Oravec
 Class Fee: \$75 (Members \$55)

Winter Dance Pass

Valid Feb 1 through Apr 26, 2019
 Instructor: Kathy Oravec
 Pass Fee: \$150 (Members \$110)

NEW! Introduction to Nature Writing

Mar 20, 27 & Apr 3
10 am – 2 pm
 Instructor: Gail Condric
 Class Fee for session: \$140 (Members \$125)



NEW! Beauty in Sea Salt

Mar 22
10 – 11:30 am
 Instructor: JoAnn Mancuso
 Class Fee: \$50 (Members \$35)
 Materials Fee: \$15 (pay instructor)

HORTICULTURE

NEW! Aromatherapy Basics

Jan 16, Feb 13, Mar 13 or Apr 17, One-Day Classes
10 am – 12:30 pm
 (Register for all four and receive a discount. See Aromatherapy Pass.)

The Nature of Plants and Essential Oils

Jan 16
 Instructor: Patricia Ann Star
 Class Fee per Session: \$65 (Members \$50) each
 Materials fee per session: \$5 (pay instructor)

Common Scents: A Practical Guide in the World of Essential Oils and Distillation

Feb 13
 Instructor: Patricia Ann Star
 Class Fee per Session: \$65 (Members \$50) each
 Materials fee per session: \$5 (pay instructor)

NEW! Fragrance and Wellbeing: Three Things to Know

Mar 13
 Instructor: Patricia Ann Star
 Class Fee per Session: \$65 (Members \$50) each
 Materials fee per session: \$5 (pay instructor)

NEW! Aromatic Skin Care for Aging Gracefully

Apr 17
 Instructor: Patricia Ann Star
 Class Fee per Session: \$65 (Members \$50) each
 Materials fee per session: \$5 (pay instructor)

CLASS REGISTRATION POLICIES

- **REGISTRATION PROCEDURES (1)** Register online at www.selby.org or **(2)** in person at our Welcome Center.
- In the event that a class is cancelled by Selby Gardens, students will receive a full refund. Student cancellations made less than 72 hours prior to class time are not entitled to a refund nor class credit.
- Material lists are available online and can be emailed or mailed upon request.
- Please visit our website for updates and additional information.
- Class sizes are limited - please register early.
- **Pre-Registration is required.** Tuition is due with registration. Pay online or use charge, check or cash in our Welcome Center.
- Registration fees are not prorated. If you do not attend any portion of class, your registration fee is forfeited.
- There are no make-up classes for students who miss a regular class session.
- Proceeds from classes support the Gardens.

HOW YOU CAN HELP

To qualify, you must meet the following restrictions:

- You must be at least 70 and a half years old.
- The funds must come from a non-Roth IRA. If you want to give from a 401K or other retirement plan, you should roll your funds over to a traditional IRA first.
- You may give up to \$100,000 annually to qualified nonprofits (your spouse may contribute up to \$100,000 as well).
- You cannot, at any time, take possession of the funds – they must be contributed directly to the nonprofit.
- Gifts must be made by December 31 each year.
- If the funds would have been taxable if paid to you, the gift cannot be counted as a charitable deduction, but it will not be included in your taxable income for the year.
- Here's the fun part - many IRA custodians will send you a check book so you can distribute (or spend) funds easily rather than having to request a distribution.

Interested in learning about other creative ways to give? Talk to your tax advisor, or contact Ann Logan, Vice President for Development, at (941) 366-5731 ext. 267 or alogan@selby.org.



Barbara Hansen

You can make a charitable gift to Selby Gardens from your IRA and when you do it correctly, that income will never be taxed.

Barbara Hansen, a Botany volunteer, past Chair of Selby Gardens' Board of Trustees and member of the Gardens' Advisory Committee, describes herself as decidedly not wealthy. However, she is fortunate to be able to allocate some of the annual minimum distribution from her traditional IRA to charitable giving.

"I'm excited about the future of Selby Gardens," says Barbara. And she is delighted that her annual gift helps the Gardens she loves to accomplish its mission. A one-time accountant, Barbara had the financial savvy to figure out an easy way to give and save on taxes.

How does this work? After you reach age 70 and a half your IRA custodian sends a statement each year indicating the minimum amount you must withdraw from your IRA that year. If you contributed pre-tax funds to the IRA and withdraw the amount for your own use, you will be taxed on the withdrawal at your ordinary income tax rate. But if you contribute those funds to any 501(c)3 not-for-profit, they will never be counted as part of your taxable income.

GROUNDWORKS SIDEWALK SALE



On Saturday, February 9 from 9 a.m. to 4 p.m. Selby Gardens will be a proud participant in the Designing Women Boutique (DWB) GroundWorks Sidewalk Sale, an upscale outdoor consignment event at Designing Women Boutique, 1226 N. Tamiami Trail, Sarasota.

Selby Gardens welcomes donations of high-end vintage and limited selection accessories, jewelry, handbags and art to be consigned through DWB at this sidewalk sale. In turn, the proceeds will be used to fund scholarships and outreach programs at the Gardens.

Shop to support Selby Gardens and DWB. To make a donation through this program, contact Ann Logan at 941-366-5731 ext. 266 or email alogan@selby.org.

About DWB: Established in 2002, DWB is Sarasota's premier non-profit boutique featuring upscale fashions, jewelry, fine art, and home goods. Through their sale of consigned, donated, and new merchandise as well as sponsorships, donations, and other fundraising activities, DWB has granted over \$2.5 million to more than 75 local recipients. Their mission is to grow funding for the benefit of Sarasota's arts and human services organizations.

Aromatherapy Pass

Valid Jan 16 through Apr 17, 2019

Instructor: Patricia Ann star

Pass Fee: \$225 (Members \$165)

NEW! Winemaking with Fruit

Jan 30, 10:00 am - 12:30 pm & Feb 6, 10 - 11:30 am

Instructor: JoAnn Mancuso

Class Fee: \$75 (Members \$65)

Materials Fee: \$60 (pay instructor)

Care & Mounting of Bromeliads

Mar 21
1 - 3 pm

Instructor: Addie Worth

Class Fee: \$50 (Members \$35)

Mounting Fee: \$10 average depending on size of plant



NEW! SHIBORI with Indigo Dye

Apr 2
10 am - 12 pm

Instructor: JoAnn Mancuso

Class Fee: \$50 (Members \$35)

Materials Fee: \$35 (pay instructor)

Potting & Mounting Orchids

Session I: Mar 14
Session II: Apr 18
11 am - 1 pm

Instructor: Angel Lara

Class Fee per Session: \$50 (Members \$35)

Potting Fee: \$10 average, depending on size of plant.

The Wisdom of Trees

Apr 4
10 am - 2:30 pm

Instructor: Beverly Gordon

Class Fee: \$65 (Members \$55)

Explore Coastal Mangroves and Seagrass Beds on the Carefree Learner Boat

Apr 30
12:30 - 3 pm

Instructors: Dr. Megan Ehlers & Capt.

Randall Patterson and Darcy Young, Public

Outreach Manager for the Sarasota Bay

Estuary Program

Class Fee: \$35 (Members \$25)

PHOTOGRAPHY

NEW! Creative Camera Techniques

Jan 11
10 - 11 am

Instructor: Perry Johnson

Class Fee: \$75 (Members \$55)



NEW! iPhoneography

Session I: Jan 19
Session II: Apr 5
10 am - 1 pm

Instructor: Olivia St. Claire

Class Fee per session: \$75 (Members \$55)

Tripod Tuesdays

Feb 19, Mar 12, Apr 2 or Apr 23
9 - 10 am

Fee per day: \$20 (Members \$15)

Photomicroscopy

Feb. 20
10:00 am - 12:00 pm

Instructor: Dennis Brock

Class Fee: \$65 (Members \$50)

NEW! Still Life & Flat Lay Photography

Mar 15
10 am - 1 pm

Instructor: Olivia St. Claire

Class Fee: \$75 (Members \$55)

Exposed: Behind the Scenes Photography

Session I: Mar 15
Session II: Apr 26
2:30 - 5:30 pm

Instructor: Daniel R. Perales

Class Fee per session: \$85 (Members \$65)

NEW! Beyond the JPEG

Mar 22
1 - 4 pm

Instructor: Perry Johnson

Class Fee: \$75 (Members \$55)

20 Quick Tips to Improve Your Photography

Apr 11
10 am - 1 pm

Instructor: Perry Johnson

Class Fee: \$75 (Members \$55)

New Perspectives in Photography

Apr 26
10 am - 1 pm

Instructor: Perry Johnson

Class Fee: \$75 (Members \$55)

MARIE SELBY BOTANICAL GARDENS

MARIE SELBY
LEGACY

Society

Each year, Selby Gardens celebrates the legacy of our founder, Marie Selby, and of all those who have made the gift of a lifetime through their own estates. Members of the Marie Selby Legacy Society have named Selby Gardens in their wills or included the Gardens in other gifts using life insurance, IRAs, and more. The Marie Selby Legacy Society allows us to recognize you during your lifetime and plan for the use of your gift.

If you have included the Gardens in your will or made other long term plans to benefit Selby Gardens, or if you would like to learn more about creative ways to make a gift, contact Ann Logan, (941) 366-5731 ext. 266.

CHAIRMAN’S CIRCLE

(As of September 2018)

Sponsor

Mrs. Gerri Aaron
Amicus Foundation
Maryann and James Armour
Bank of America Client Foundation
Charles & Margery Barancik Foundation
Mr. and Mrs. Robert G. Bartner
Better-Gro
BMO Private Bank
Ed and Betsy Cohen/Areté Foundation
Community Foundation of Sarasota County
Mr. and Mrs. Howard R. Curd
Dart Foundation
Mr. and Mrs. Norbert P. Donelly
Drs. Andrew and Judith Economos
Mr. and Mrs. Douglas C. Elder
Mrs. Jean Weidner Goldstein
Gulf Coast Community Foundation
The Jewish Federation of Sarasota-Manatee
Mr. and Mrs. Michael H. Klein
Mr. and Mrs. William L. Knapp
Mrs. Beverly L. Koski
Koski Family Foundation
Mr. Ernest R. Kretzmer
Rita B. Lamere Memorial Foundation
Dr. and Mrs. Carlyle A. Luer
Elaine Nicpon Marieb Charitable Foundation
Mr. and Mrs. Frank A. Martucci
Cornelia and J. Richard Matson
Mrs. Nathalie W. McCulloch
Mr. and Mrs. William L. McComb
Michael’s On East
Ms. Carol L. Miller
Ms. Virginia A. Miller
MISH New York
Mr. and Mrs. Jonathan E. Mitchell
Mr. and Mrs. Keith D. Monda
Northern Trust Bank
Dr. and Mrs. Thomas J. Russell
Mr. David J. Sales
Mr. and Mrs. Wayne F. Seidl
William G. Selby and Marie Selby Foundation
Steinwachs Family Foundation
Mr. Joseph A. Strosnik
Mr. and Mrs. Hobart K. Swan
Ms. Pauline Wamsler
Mrs. Jean Weidner Goldstein
Williams, Parker, Harrison, Dietz & Getzen

Co-Sponsor
Allegiant Private Advisors
Bank of America
Mr. and Mrs. Robert A. Bernhard
The Honorable and Mrs. Vernon G. Buchanan
Mr. and Mrs. Warren J. Coville

*Deceased

Dr. and Mrs. William Gill
Ms. Teri A Hansen
Mr. Dale S. Kammerlohr
Mr. and Mrs. F. John LaCivita
Ms. Marietta F. Lee
D. R. Long Foundation
Mr. and Mrs. Thomas E. McInerney
Mrs. Evelyn S. Mink
Jeff and Vicki Moore
Mr. and Mrs. Gregory T. Mutz
PNC Wealth Management
Mr. and Mrs. George Quester
Mr. David E. Sessions
Mr. and Mrs. Zuheir Sofia
Mr. and Mrs. Thomas H. Watson
The Woman’s Exchange

Patron

Ms. Peggy C. Allen and Mr. Steve Dixon
Anonymous
Ms. J. Allison Archbold, Esq and Mr. Hugh J. Bettendorf
Mr. and Mrs. Robert G. Arthur
Mr. and Mrs. Travis Brown
The Chrisman Foundation
Ms. Jeanne L. Coleman and Mr. Stephen R. Leinhart
Ms. Carole Crosby and Mr. Larry Wickless
Mr. and Mrs. Robert N. Davies
Mr. and Mrs. Robert Essner
Ace & Lillian Fessenden Family Foundation
Ms. Donna L. Fisher
Mrs. Shirley Foss
Ms. Carolyn Keystone and Mr. James Meekison
Mr. Marvin Kocian
Ms. Cathy L. Layton and Mr. Pete Russell
Dr. and Mrs. Bart H. Levenson
Dr. and Mrs. Richard A. Moskovitz
Mr. and Mrs. James M. Oates
Mr. and Mrs. Roy H. Park
Charlotte and Charles Perret
Mr. Alice W. Rau
Schloss Family Foundation
Mr. Peter G. Swain
The Swart Family Foundation
Ms. Marcia Jean Taub
Mr. and Mrs. William D. Tompkins
Triad Foundation, Inc.
Dr. and Mrs. Frederick Wurlitzer
Judith Zuckerberg Family Foundation

Benefactor
Anonymous
Mr. and Mrs. Michael R. Baker
Mrs. Sylvia S. Barber
Ms. Isabel Becker
Mrs. Libby Besse
Mr. and Mrs. Gerald Biller
Anne and Walter Bladstrom
Ms. Sherran Blair
Mrs. Rose Marie Bowles
Ms. Barbara Brizdle

Susan and Jim Buck
Mr. and Mrs. Robert E. Carter
Mr. and Mrs. Christopher D. Cianfaglion
Mr. and Mrs. Ron Ciaravella
Mrs. Pattie B. Clendenin
Mr. and Mrs. Christopher Cogan
Dr. Deborah E. Cohen and Mrs. Maxine Spitzer
Mr. and Mrs. C. Martin Cooper
Tom & Katie Cornell
Cumberland Advisors
Mr. John F. Cuneo Jr.
Mr. and Mrs. Peter J. Daley
Mr. Dan Denton
Mr. and Mrs. David Denton
Mrs. Bernice M. Davis
Mr. and Mrs. Neil P. DeFeo
Mrs. Kay DeLaney and Mr. Murray Bring
Frederick Derr & Company
Designing Women Boutique
Mr. and Mrs. James Dewey
Mr. and Mrs. Pat Dorsey
Mr. James E. Duffy and Ms. Julie N. Baker
Mr. and Mrs. Charles A. Eckert
Leon and Marge Ellin
Mr. and Mrs. Chris Elser
Mr. and Mrs. John E. Evans
Mr. and Mrs. Martin W. Faust
William C. and Joyce K. Fletcher
Mr. and Mrs. William T. Forrester
Marce Fuller and Lee DeOvies
Gold Coast Eagle Distributing L.P.
Mr. and Mrs. Robert C. Goree
Mr. David A. Hagelstein and Mr. Stephen Heffron
Ms. Katherine Harris and Mr. Richard Ware
Dr. Martha M. Harrison and Peter B. Miller
Peter and Katie Hayes
Mr. and Mrs. Allen Heise
Henson Personal Cardiology and Internal Medicine
Carolyn and Bob Johnson
Mr. and Mrs. William R. Johnson
Mr. and Mrs. Larry S. Kabinoff
Ms. Amy Jo Katz
Mr. and Mrs. Thomas L. Koski
Dr. and Mrs. William J. Lahners
Mr. Harry Leopold and Ms. Audrey Robbins
Mr. and Mrs. Thomas B. Luzier
Mrs. Flora Major
Mr. Kenneth McKinnon and Ms. Erin McKinnon
Francis and Barbara Misantone
Edward D and Anna Mitchell
Family Foundation
Mrs. Gloria Moss
Dr. and Mrs. Philip K. Nelson
Mrs. Isabel S. Norton and Ms. Leslie Norton
Mr. Richard E. Perlman and Ms. Ellen Hanson
Mr. and Mrs. Peter S. Powers

Mr. Sandy Rederer
Ms. Rosemary A. Reinhardt and Mr. David P. Welle
Mr. and Mrs. Skip Sack
Sarasota Magazine
Mrs. Ina L. Schnell
So Staged Events & Rentals
SRQ Magazine
Mrs. Betty A. Stewart
Dr. Laurey M. Stryker and Dr. Charles Stryker
Mrs. Lois Stulberg
Ms. Jessica Swift
Mrs. Sylvia M. Thompson
Total Wine & More
In memory of Paul van Antwerpen
Dr. Richard and Monica Van Buskirk
Ms. Emily A. Walsh
Mrs. Elisabeth Waters
Marianne and Doug Weiss
John and Myrna Welch
Ms. Michael Ann Wells and Mr. Dave E. Soltis
Mr. and Mrs. Daniel A. West
The Westin Sarasota
Mr. Martin J. Wilhelm
Ms. Janet Wettlaufer and Mr. Donald Miller
Robert and Barbara Wetzel
Mrs. Margaret P. Wise
Mr. and Mrs. Arthur M. Wood
Ms. Jane Y. Woods

INDIVIDUAL AND CORPORATE DONORS

(Recognizing gifts given between June and September 2018)
Allegiant Private Advisors
Mr. and Mrs. Donald W. Ames
Mr. and Mrs. Charles Annaloro
Mr. and Mrs. James A. Armour
Baltimore Orioles
Bank of America
Bank of America Client Foundation
Dr. Marguerite Barnett
Ms. Patricia Baron
George Barrie Foundation
Mr. and Mrs. Richard Barrie
The Benevity Community Impact Fund
Mr. and Mrs. Michel Bishay
Mr. and Mrs. Michael Bishop
Mr. and Mrs. Robert A. Bleckicki
Mr. and Mrs. Howard H. Bondy
Mrs. Rose Marie Bowles
Mrs. Veronica B. Brady
Mr. and Mrs. Richard A. Brown
Mrs. Terrie L. Brown
Mr. and Mrs. John M. Brownell
The Honorable and Mrs. Vernon G. Buchanan
Buchanan Family Foundation
Ms. Ruta Bukauskas
Mr. and Mrs. David S. Burton
Ms. Nancy S. Bushnell and Mr. Victor G. Reiling, Jr.

Cactus Succulent Society of America
Mr. and Mrs. Julian Catala
Mr. and Mrs. John C. Collins
Community Foundation of Sarasota County, Inc.
Ms. Janet Coughlin
Mr. and Mrs. Warren J. Coville
Mrs. Carole Crosby and Mr. Larry Wickless
Mr. and Mrs. Jeff Crotty
Dart Foundation
Mr. and Mrs. Dick Davison
Mr. and Mrs. Michael J. Day
Mr. John De Kanel
Dr. and Mrs. Carlo R. De Rosa
Neil & Sandra DeFeo Family Foundation
Mrs. Fay K. Donaldson
Mr. Richard O. Donegan
Mr. and Mrs. Wells B. Dow
Mr. and Mrs. Joel E. Dyckes
Drs. Andrew and Judith Economos
Andrew and Judith Economos Foundation
Mr. and Mrs. Roger C. Effron
Mrs. Linda Egerbrecht
Elaine Nicpon Marieb Charitable Foundation
Mr. and Mrs. Edward D. Eliasberg
ExxonMobil Foundation
Ms. Gerry Fabrikant and Mr. Tim Metz
Rev. Reid D. Farrell and Mr. Dale L. Willard
Florida State University
Mrs. Mary Anne Foss
Ms. Carole Friedman
Mr. and Mrs. Lou Fusilli
Dr. and Mrs. David F. Gage
Gardener Foundation
Mr. and Mrs. John Gatesy
Mr. and Mrs. Paul E. Geck
Mr. Larry Geimer
Larry Geimer & Associates CPAs
Mr. and Mrs. David Glosser
GodwinGroup
Ms. Margaret Goldberger
Mr. and Mrs. John T. Goltiz
Mr. and Mrs. Joseph C. Grabowski
Gulf Coast Community Foundation
Mr. and Mrs. Philip N. Hammersley
Ms. Eileen Hendrick
Mrs. Claudia M. Hennigan
Mr. and Mrs. George R. Hofmann, Jr.
Hudson Bayou Neighborhood Assoc, Inc.
Dr. Mary L. Jelks
Jelks Family Foundation
Ms. Hilary P. Jones
Mrs. Marie P. Jones
JP Morgan Charitable Giving Fund
Mr. and Mrs. Ronald L. Karns
Mr. Patrick Keeling
Mr. and Mrs. Jonathan B. Kellogg
Mrs. Helen H. Kelly
Mr. and Mrs. Patrick Kennedy
Mr. and Mrs. Patrick W. Kenny

Mr. Bob Kleiser
Mr. and Mrs. William L. Knapp
Mr. George M. Kole and Ms. Judith Zuckerberg
Kona Ice Sarasota
Mrs. Beverly L. Koski
Mr. Robert C. Koski
Koski Family Foundation
Ms. Mary Ann Kowalski
Mr. and Mrs. E. Ramsey Kraft
Ms. Emily C. Lane
Larry Geimer & Associates CPAs
Ms. Philippa J. Le
Mrs. Betty K. Lindenberg
Mr. John P. Lipkin
Mrs. Katherine Lipkin
Mr. and Mrs. Gene A. Lodge
James M. and Patricia R. Lombard Foundation
Dr. and Mrs. Carlyle A. Luer
Ms. Eleanor S. Lyons
Ms. LaVerne Mahloch
Mr. and Mrs. Frank A. Martucci
Mr. and Mrs. Allan Mason
Mr. and Mrs. J. R. Matson
Mrs. Gail Maynard
Mrs. Dawn C. McDonald
Mrs. Ginny McGee
Ms. Carol McKeone
Mr. and Mrs. James W. McLane
Mr. Mike McLaughlin
Dr. James McLeod and Ms. Mary Ann Kowalski
Mr. and Mrs. Robert Merrill
Mrs. Karen S. Milam
Mr. Robert Milner
Mr. and Mrs. Joseph Moccia
Mr. Gerald R. Moody
Morgan Stanley Global Impact Funding Trust
Mrs. Gloria B. Moss
Network for Good
Mr. and Mrs. Stanley Newman
Mr. John Owen and Ms. Lynne Lockie
Ms. Nancy S. Palmer and Mr. Roger Palmer
Mr. and Mrs. Edward H. Papish
Mr. and Mrs. Robert J. Paulishak
Mrs. Jane A. Pecsvaradi
Mrs. Ann T. Peek
Mr. and Mrs. Charles M. Perret
Pfizer Foundation Matching Gifts Program
Ms. Julie A. Planck
Mrs. Patricia D. Plotkin
Mr. Richard A. Plotkin
Mr. and Mrs. Jon S. Pohl
Mr. and Mrs. Chris L. Poulos
Ms. Ingrid A. Presser
Mr. Robert A. Richard and Mr. Thomas G. Devouton
Mrs. Grace H. Riker
Dr. and Mrs. Howard E. Rotner
Mr. David Rovine
Ms. Rosalind Sorbello Rowe and Ms. Joan Leonard

Dr. and Mrs. Brent Rubin
Mr. and Mrs. Richard Ruck
Mr. and Mrs. Peter M. Ruggles
Mr. and Mrs. Stefan L. Rusnak
Ms. Barbara G. Ryder
SagaCity Media Inc
Mr. Hans R. Salheiser and Mrs. Lynette Velez
Sarasota Bromeliad Society
Sarasota Government
Ms. Marci G. Saunders
Ms. Susan B. Schulman
Ms. Marcy Secor-Harrington
Mrs. Joan S. Shaver
Sheboygan Progressive Care Center
Mrs. Marilyn R. Shelley
Dr. and Mrs. Alan M. Shuman
Mr. and Mrs. Hudson Smith
Mr. Roderick Smith and Ms. Lois Patterson
Mrs. Cristina Soares
Mr. Jose Soares and Mrs. Michelle Ladeira
Mr. David E. Soltis and Ms. Michael Ann Wells
Mr. and Mrs. Paul C. Spangler
Mr. and Mrs. Harvey D. St. John
State of Florida Department of Economic Opportunity
State of Florida, Department of State, Division of Cultural Affairs; the Florida Council on Arts and Culture
Ms. Catherine Steigmeyer and Mr. Gregg Steigmeyer
Mr. and Mrs. James G. Stewart
Ms. Arlene E. Sullivan
Mr. and Mrs. John M. Swiatkowski
Mr. Hans R. Salheiser and Mrs. Lynette Velez
Mr. Stanley Vickers
Visit Florida
Dr. Eleanor Wachs
Ms. Sandra Waller
Ms. Pauline Wamsler
Dr. and Mrs. John D. Welch
Mr. and Mrs. Garry L. Wharton
Mrs. Kathryn Wheeler and Ms. Philippa Le
Ms. Julia D. White
Mr. and Mrs. Robert Williams
Williams, Parker, Harrison, Dietz & Getzen
Mr. and Mrs. Michael J. Wilson
Mr. and Mrs. Matthew S. Winters
Mr. and Mrs. Michael Wojnowski
Woman’s Exchange
Mr. and Mrs. Glenn R. Zastrow
Dr. and Mrs. Seymour Ziegelman
Ms. Judith Zuckerberg and Mr. George M. Kole

GIFTS IN KIND

(Recognizing gifts given between June and September 2018)

Mrs. Nancy Edmondson

Mr. and Mrs. Stan B. Kaplan
Mrs. Nathalie W. McCulloch
Ms. Alice Sciarrino
Serbin Printing
Suncoast Environmental Group, Inc.
Williams, Parker, Harrison, Dietz & Getzen
WUSF Public Media
Mr. Keith Zimmerman

TRIBUTES

(Recognizing gifts given between June and September 2018)

Memorial Bench Contributions

In Memory of Mr. Michael C. Corbino
Mrs. Sharon C. Black
Mrs. Nancy L. Blackburn
Pamela Hughes & Co. Inc.
Mr. and Mrs. Jeffrey B. Sedacca
Mrs. Margaret P. Wise
In Memory of Susan Alison Gregory
Mr. and Mrs. James M. Gregory
Mrs. Barbara G. Pittenger
Ms. Kathryn Rowan

Memorial Contributions

In Memory of Mrs. Adele M. Liberi Gorman
Ms. Candice Brady
In Memory of Mr. Freeman W. Hiscox
Mr. Scott McLaughlin
In Memory of Sara Ellen Krinsk
Mr. and Mrs. Kenneth Bistany
Mrs. Iris F. Perkins
In Memory of Mr. Donald C. Leidel
Mrs. Annette Isaacson
In Memory of Mrs. Mary B. Perry
Simson-First Foundation
In Memory of Mrs. Lillian Friedman Rivera
Mr. and Mrs. Michael E. Catalinotto
Gruber Palumberi Raffaele Fried, PC
Ms. Elinor Friedman
Mrs. Nancy Levy and Dr. Gerald Yosowitz

Honorarium Contributions

In Honor of the mother of Ingrid Farenheim
Mr. and Mrs. Larry Lesko
In Memory of Pamela H. Piazza
Mr. Richard N. Piazza and Ms. Lorrie Brouse
In Honor of Ms. Mary D. Rabone
Ms. Nancy Smith
In Honor of Jennifer L. Rominiecki
Dr. and Mrs. Jeffrey Driver
In Honor of Lenore Treiman and Family
Ms. Susan B. Schulman

Butterfly Garden
Walkway Bricks

In Memoriam
In Memory of Captain Jeff
Ms. Nancy Palmer Dixon
In Memory of Jack Cook
Mr. and Mrs. Kevin Cook
In Memory of Martha and Anthony Girese
Mr. and Mrs. Anthony Girese, Jr.
In Memory of Illit
Ms. J. Allison Archbold and Mr. Hugh J. Bettendorf
In Memory of Debbie and Gabe Michael
Ms. Naomi Fieman
In Memory of Lyn Troxler
Mr. and Mrs. Randy White

In Honor
In Honor of Amy and Chris Allen
Mr. Greg Bortnichak and Ms. Erin Murphy
In Honor of Judie and Jack Bauer
Ms. Denise Stiebel

CONTRIBUTING
MEMBERS

(Recognizing gifts given between June and September 2018)

Stewards of the Earth
Mr. John W. Bean and Mrs. Alexandra Jupin-Bean
Mr. and Mrs. C. Martin Cooper
Mr. and Mrs. Thomas J. Degnan
Dr. Kimberly S Dunn
Mr. and Mrs. Don Friedrich
Mr. and Mrs. John Gartner
Mr. and Mrs. Charles H. Hamilton
Mr. and Mrs. Julian R. Hansen
Ms. Amy Jo J. Katz
Dr. Diana Lager
Dr. and Mrs. Keith March
Mr. and Mrs. Richard H. Nimitz
Mr. and Mrs. Frederick Ozdoba
Ms. Marjorie L. Pflaum
Dr. Dennis A. Revicki and Ms. MaryLou Poe
Mr. and Mrs. John Robenalt

Jennifer and Robert Rominiecki
Mr. and Mrs. Michael Scharf
Mr. and Mrs. Scott Schechter
Mr. and Mrs. James I. Uihlein

New Benefactor Members
Ms. Barbara M. Pickrell

New Patron Members
Mr. Matt G. Maier
Mr. and Mrs. Ken Sternad

New Family Members
Ms. Gail Barnes
Mr. and Mrs. Robert Bergs
Mr. and Mrs. Reese Bowen
Mr. Sebastien Brion and Dr. Katherine Brion
Ms. Helene Caetano
Mr. and Mrs. William Douglas
Mrs. Paula Drake
Mr. and Mrs. Swen P. Ekstrom, Jr.
Ms. Melanie Fischer
Mr. and Mrs. John Goss

Dr. Elizabeth Guancial and Dr. Davender Khera
Ms. Carolyn Gundersen
Mr. and Mrs. Urban Hecker
Mr. and Mrs. Daniel Huk
Mr. and Mrs. John Jefferson
Ms. Sacha Knop
Mrs. Joni Koontz
Mr. and Mrs. Kyle Kranzo
Mr. and Mrs. Vince Macciocchi
Mrs. Giuliana Meany
Mr. and Mrs. Richard Miller
Mr. Ngung Van Nguyen and Mrs. Thanh Thi Tran
Mr. Chris Schale and Ms. Michelle Pufnock
LCDR and Mrs. Donald Roser
Mr. and Mrs. Jared Sedam
Mrs. Jude Smith and Mrs. Ember Harker
Mr. Shawn Stevens
Mr. and Mrs. Eric Suescun
Mrs. Lauren Weems
Mr. and Mrs. Ezekiel Wentworth



our PAST



The Selby House, circa 1930s.

Preserving our history at Selby Gardens is of paramount importance to us, especially as we embark on the Master Site Plan transformation. As we prepare for our sustainable future, Selby Gardens is committed to responsibly preserving and stewarding the historical treasures entrusted to our care. We are currently undergoing an extensive renovation of the Selby House, thanks to support from the William G. and Marie Selby Foundation, and it recently received local historic designation from the City of Sarasota. The Payne Mansion, home to the Museum of Botany & the Arts since 1979, also recently received local historic designation from the City of Sarasota, in addition to its National Register of Historic Places designation. Preservation efforts will continue in Phase One of the Master Plan whereby the historic Augusta Block that lines Palm Avenue will be preserved and become a pedestrian-friendly promenade for all guests of the Gardens to enjoy. Finally, the Gardens is pursuing a site-specific zoning district with the City of Sarasota that will ensure the Gardens remain a botanical garden



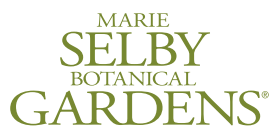
Top: Selby House, watercolor by Carolyn Merenda. Above: Renovation of Selby House in 2005.

corporate
PARTNERSHIPS

Investments made in Selby Gardens by corporate partners help us accomplish our mission of conservation, botanical research, education and beautiful display of the Gardens' world-class collection of living and preserved plants. To become involved, or for more information, contact Ann Logan at alogan@selby.org

THANK YOU to our corporate partners.





811 SOUTH PALM AVENUE
SARASOTA, FLORIDA 34236
www.selby.org

JEAN & ALFRED GOLDSTEIN EXHIBITION SERIES

GAUGUIN

Voyage to Paradise

AT SELBY GARDENS

OPENS FEBRUARY 10, 2019

LEAD SPONSORS



GULF COAST
COMMUNITY FOUNDATION

MAJOR SPONSORS

Gerri Aaron; Maryann and James Armour; Better-Gro; BMO Private Bank; Ed and Betsy Cohen/Arête Foundation; Gold Coast Eagle Distributing; Ernest Kretzmer; Flora Major for the Kutya Major Foundation; Keith and Linda Monda; Northern Trust; So Staged; Total Wine & More; Williams Parker Harrison Dietz & Getzen

SUPPORTING SPONSORS

Bank of America; Beverly and Bob Bartner; Doris M. Carter Family Foundation; Community Foundation of Sarasota County; Linnie E. Dalbeck Memorial Foundation; Dart Foundation; Drs. Andrew and Judith Economos; The Jewish Federation of Sarasota-Manatee; Marcy and Michael Klein; Katherine and Frank Martucci; Harry Sudakoff Foundation; The Woman's Exchange

ADDITIONAL SPONSOR SUPPORT

Alliance Française de Sarasota; Florida Humanities Council; Teri A Hansen; Maria and Allen Heise; Charlotte and Charles Perret; Jennifer and Robert Rominiecki; State of Florida, Department of State, Division of Cultural Affairs; Florida Council on Arts and Culture



6 - 9 PM
\$50 adult guests, \$45 members

Experience the exhibition and grounds using all five senses with Gauguin Nights. A variety of cultural performances will add to the sensory experience throughout the five month exhibit. Each evening performance will include full access to the Gardens, hors d'oeuvres, and cocktails. Tickets available at selby.org.

FEB 20 • Perlman Music Program/Suncoast

MAR 6 • Sarasota Opera

APR 10 • Sarasota Ballet

MAY 8 • Florida Studio Theatre performing selections from South Pacific

JUNE 12 • Sarasota Music Festival – a program of Sarasota Orchestra

SPONSORED BY:



SPONSORED BY:

Flora Major for the Kutya Major Foundation

FEB. 23, MAR. 16, APR. 13, MAY 11, JUNE 15

Calling all kids (and kids at heart)! Enjoy art and nature as part of the Paul Gauguin experience at Selby Gardens. Held monthly through June, Family Saturdays in Paradise will offer artistic children's activities in the great outdoors. During the morning hours from 10 a.m. to noon, kids will have the opportunity to create their own paradise-inspired art with tempera paint, crayons, colored pencils, markers, colored paper, and other materials.

Free for members and with general admission.