

MARIE  
SELBY  
BOTANICAL  
GARDENS®

# TROPICAL dispatch

MAY-AUGUST 2019



*Voyage to  
Paradise*

THROUGH  
JUNE 30

GAUGUIN

JEAN & ALFRED GOLDSTEIN EXHIBITION SERIES

VOLUME 46, ISSUE 2

*Message from the President and CEO* ..... 3

**SUPPORT OF THE MASTER PLAN**  
Dr. Calaway H. Dodson, the First Executive Director  
of Selby Gardens, Pens An Op-Ed Piece .....4

**MASTER PLAN UPDATES** .....5

**AN OUTDOOR CLASSROOM**  
Selby Gardens and The Ringling Museum .....6

**NATIONAL GEOGRAPHIC GRANT AWARDED** ... 7

**SELBY GARDENS' TOP SHOP**  
Garden Shop Makes the Top Garden Gift Shop List ..... 7

**FINANCIAL TIMES VISITS SELBY GARDENS**...8-9

**TEAM SELBY GARDENS VISITS COSTA RICA** 10-11

**AMERICAN PUBLIC GARDENS ASSOCIATION  
AWARD** .....12-13

**EVENTS** ..... 14-16

**MICHAEL'S ON EAST AT SELBY GARDENS** .... 17

**20 YEARS OF SERVICE: LISA WADE** ..... 18

**IN MEMORIUM**  
Nathalie McCulloch, 1920-2019 ..... 19

**CLASSES**.....20-22

**SUPPORT & DONORS** .....23-27

Would you prefer to receive your *Tropical Dispatch* electronically?  
If so, please email us at [marketing@selby.org](mailto:marketing@selby.org) to be part of our conservation efforts.

**ABOUT THE COVER**

A Polynesian tiki looks out over taro plants at Selby Gardens as part of the *Gauguin: Voyage to Paradise* exhibition. Photo by Darren Erickson.

**HOURS & ADMISSIONS**

**Garden Hours** The Gardens are open 10 a.m. – 5 p.m. every day except Christmas Day. Please check [selby.org](http://selby.org) for special event and weather closings.

<b>Admission</b>	Members: Free	Adults: \$20
	Children 4-17: \$10	3 & under: Free

(Rates may vary for special exhibitions)

Connect with Us!     @selbygardens

**BOARD OF TRUSTEES**

Michael J. Wilson, Esq., *Chair*  
Pauline Wamsler, *Vice Chair*  
Katherine A. Martucci, *Secretary*  
Andrew M. Economos, Ph.D., *Treasurer*  
J. Allison Archbold, Esq.  
Norbert P. Donelly  
Jean Weidner Goldstein  
Teri A Hansen  
Marcy Klein  
Cornelia Matson  
Marianne D. McComb  
Daniel M. McDonald, *STAR Leadership Program*  
Charlie Mueller  
Sharyn Weiner  
Margaret Wise  
Jennifer O. Rominiecki, *President & CEO*  
Dr. Carlyle A. Luer, *Trustee Emeritus*

**ADVISORY COMMITTEE**

Teri A Hansen, <i>Chair of the Advisory Committee</i>	Flora Major
Maryann Armour	Dr. Joel Morganroth
Eileen Curd	Charles Murphy
Ariane Dart	Anand Pallegar
Dr. Calaway H. Dodson	Alice Rau
Betsy Elder	Sandy Rederer
Douglas C. Elder	Wayne Rollins
Martin Faust	Jeannie Russell
William Gamble	Michael Saunders
Scott Greer	Nikki Sedacca
Barbara Hansen	Susan Sofia
Katherine Harris	Charles Stottlemeyer
Stephen Hazeltine	Dorothy Stottlemeyer
Gary Heard	Joseph Strosnik
Rod Hollingsworth	Dr. Laurey T. Stryker
Carolyn Johnson	Dr. Kiat W. Tan
Nora Johnson	Martin M. Wasmer
Wilson M. Jones	Gwen Watson
GeeDee Kerr	Arthur M. Wood, Jr.
Beverly Koski	Peggy Wood
Martin Kossoff	
Richard Lawrence, Esq.	

**MISSION**

*To provide an oasis of inspiration and tranquility, while furthering the understanding and appreciation of plants, especially epiphytes.*

**PROGRAM SPONSORS**

Selby Gardens programs are sponsored in part by the State of Florida, Department of State, Division of Cultural Affairs; the Florida Council on Arts and Culture; and are paid for in part by Sarasota County Tourist Development Tax Revenue



**MEMBER ADDRESS CHANGES**

Mail: Membership  
Marie Selby Botanical Gardens  
811 South Palm Avenue, Sarasota, FL 34236  
Email: [membership@selby.org](mailto:membership@selby.org)  
Phone: (941) 366-5731, ext. 231



Accredited by the American Alliance of Museums



Accredited by the Center for Plant Conservation

PHOTO CREDIT: Sarasota Herald-Tribune/Thomas Bender



"YOUR  
CONTINUED  
SUPPORT IS  
CRITICAL  
AND MUCH  
APPRECIATED."

**P**lus ça change, plus c'est la même chose." Coined by the nineteenth century French writer Jean-Baptiste Alphonse Karr, it translates to "the more things change, the more they stay the same." This particular phrase came to mind when reading an op-ed by Dr. Calaway H. Dodson, the first executive director of Selby Gardens. (Read the op-ed on page 4). As we embark on the Master Plan transformation, I'm reminded that while we are in the season of change, the intent for the Gardens to be an oasis of green space in downtown Sarasota remains.

In this issue, you will learn that the Gardens continue to contribute to the international world of science. Staff from the Botany, Horticulture, and Education teams went on a recent visit to Costa Rica (pages 10-11) and Dr. Sally Chambers won a *National Geographic* grant to study on the island of Domenica.

Another fact that remains the same is our incredible staff. I invite you to flip to page 18 to learn about Lisa Wade, our Horticulture Coordinator and 20-year veteran of the Gardens. Our staff cannot run a world-class institution without the help of our 800+ volunteer corps. We celebrated and honored them in April. We also honored one of the longest serving Gardens' volunteers, Nat McCulloch (page 19).

The Master Plan continues to move forward and your support, in all forms, is very much appreciated. In late January, we announced a major milestone in our fundraising efforts with 74 percent of the phase one goal secured thanks to the largest gift in the Gardens' history as well as other leadership donors (page 5). In both February and March, we presented our plan to the Development Review Committee, a committee comprised of City of Sarasota planning department staff. We eagerly await our presentations to the Planning Review Board and City Commission. Your continued support is critical and much appreciated.

Our Jean & Alfred Goldstein Exhibition continues to be a hit and as the seasons change, *Gauguin: Voyage to Paradise*, can be seen in a different light. There is still plenty of time to bring your friends as it is on view through June 30.

Finally, summer is a wonderful time for families and children to visit the Gardens. Summer camp registration is off to a fast start and Splashin' Saturdays return (page 16). I look forward to seeing you at the Gardens this summer and remember "*plus ça change, plus c'est la même chose*."

Cheers,

Jennifer O. Rominiecki



## A Voice in Support of the Master Plan

Dr. Calaway H. Dodson, the first Executive Director of Selby Gardens penned an op-ed in the *Sarasota Herald Tribune*.

It tells a remarkable story of Selby Gardens' place in the Sarasota community, both then and now.

Original story published in the *Sarasota Herald Tribune* February 24, 2019.

As the first Executive Director of The Marie Selby Botanical Gardens and serving the institution from 1973 to 1983, I was among the first stewards of Marie Selby's legacy. Many of the beliefs and visions we shared in the Selby Gardens' original member's magazine, the Bulletin, in 1974, just prior to the Gardens' opening still ring true today. I think the people of Sarasota should know a few of these.

In the first edition of the Bulletin our founding group wrote "we believe The Marie Selby Botanical Gardens will become one of the finest gardens for its size in all the world."

It was a daunting vision, but steadfast passion propelled us on the path towards international renown. Through the years, and not by much of my own accord, the level and quality of our operations have put the gardens decidedly in the category of the "finest gardens for its size in all the world. The current Master Plan only further ensures that the Gardens will continue as a botanical garden where "one may enjoy the splendor of the plant world in one of the most lovely natural settings in Florida."

Today, we find ourselves at a crossroads in not only Selby Gardens' history, but the history of Sarasota. Selby Gardens must evolve with the times or risk its very existence both in Sarasota and in the world of scientific research. Indeed, the Gardens must incorporate modern amenities to properly welcome guests, connect them with the Gardens mission, and create the infrastructure necessary to protect its invaluable living and preserved plant collections.

Though the Board of Trustees acquired adjacent parcels of land expanding the original seven acres

to 15 today, conserving it as a place of nature and learning has not always been the easiest route. It is no surprise that the peninsula on which Selby Gardens' sits caught the eye of many developers throughout the years, yet the lure of such lucrative development deals, especially during times of hardship, were rejected in favor of Marie's original intent.

"...in one stretch, this file [referring to march of condominium construction on the bayfront] has been stopped by the last will and testament of Marie Selby, and with its stopping, the irreplaceable loss of one of the loveliest stretches of waterfront in Florida has been prevented. The property is now the legacy of the citizens of Sarasota, and one for which the inhabitants of the existing condominiums and apartments will be especially thankful. To augment Sarasota's stature as a center of culture, the city will now have added praise for botanical gardens of beauty and future scientific renown."

The above statements, penned in 1974, could easily describe Sarasota today, underscoring the vital role Selby Gardens plays in the fabric of the Sarasota community. From what I know, more than 13,000 member households and 220,000 guests visit the Gardens on an annual basis, unequivocal evidence that these statements remain true to this day. The Gardens are one of the few areas where nature is still served in downtown Sarasota today and the zoning being requested for the Master Plan will designate the land as a botanical garden in perpetuity strengthening Marie Selby's intent for a garden in downtown Sarasota.

There are many opinions about the way progress should happen at the Gardens, but one thing remains certain in my mind—the direction the Gardens is headed. It is one that preserves green space in downtown Sarasota, protects world-renowned scientific collections, and ultimately betters both the community and the people in Sarasota.



We are thrilled to report that since the launch of the campaign in October 2018, several new leadership gifts totaling nearly \$10 million, have been made to *Innovating a Greener Future - Living Inspiration for a Living Museum: The Campaign for Selby Gardens*. A total of **\$31.5 million** has now been secured, which is **74 percent** of what is needed to reach the Phase One goal of \$42.5 million!

The significant progress attained toward the Phase One goal has been made possible by a 5-million dollar gift by visionary Sarasota donors **Drs. Joel and Gail Morrison Morganroth**. This is the largest gift in Selby Gardens' history!

## NEIGHBORHOOD INPUT

Through fifteen meetings with neighbors and community stakeholders during the past two years, our Master Plan has been revised to incorporate their feedback resulting in \$1.5 million in additional project costs and improvements.

### Traffic Improvements

- Out of our property, we will add a second left-hand turn lane on northbound Orange Avenue, a dedicated right-hand turn lane on southbound Orange Avenue, and we will combine our two existing driveways on Orange Avenue into one driveway, with directional curbing and signage prohibiting right-hand turn exits southbound on to Orange Avenue.

### Accommodations for Public Access

- We will build and maintain a Multi-Use Recreational Trail (MURT) with a dedicated public access easement that ends at a public Bayfront pocket park.
- We will open the Oak Oval Parklet, Glades Garden, and Hammock Arrival Garden spaces to the public.

# MASTER PLAN CAMPAIGN UPDATES

## Largest Gift in Selby Gardens' History Secured

Upon completion of the Master Plan, the Gardens will add fifty percent more garden space, safeguard and showcase the world's best scientifically documented collections of orchids and bromeliads, accommodate our rapidly growing visitor base, and connect more underserved families and children in the region to nature and Selby Gardens. It will also set us on-course as an internationally recognized leader in sustainability through the addition of a 500,000 gallon storm water management system, and through serving as the first Net Positive Energy complex at any botanical garden in the world.

### Noise Mitigation

- In calendar year 2019, we will install a gardens-wide centrally-controlled sound mitigation system.
- We relocated all planned loading docks, solid waste, and recycling operations to a climate-controlled room in the ground floor of the Sky Garden.
- We eliminated the chiller plant.
- We redesigned back-of-house operations to allow operational vehicles to function face-forward and minimize back-up "beeping" noises.

### Reductions in the size and scale of buildings and their proximity to our neighbors

- 25 percent reduction in the Sky Garden footprint
- 75 percent reduction in the height of the Sky Garden to 56 feet
- 15 percent reduction in the greenhouse footprint
- 60 percent reduction in the height of the greenhouse to 50 feet
- Increased the setbacks of both the Sky Garden and the greenhouse complex



# An Outdoor Classroom



## Between SELBY GARDENS and THE RINGLING MUSEUM

**H**ands-on experiential learning outside of a typical classroom setting can lead to eye-opening moments for teachers and students alike. With schools' emphasis on STEM (science, technology, engineering and math) as well as arts integration, museum settings and outdoor excursions represent ideal laboratories for science and art exploration. "Aha!" moments abound during field trips to a community's cultural attractions, but many schools and students are unable to afford these experiences. Teachers may also be unfamiliar or uncomfortable with teaching, leading, or planning a valuable art or science lesson in an outdoor setting. With these gaps in mind, Tracy Calla, Selby Gardens' Senior Manager of School & Family Programs, and Katie Nickel, The Ringling Museum of Art's School and Teacher Program Coordinator, hatched a plan to train teachers on the benefits of taking the classroom outdoors, the intersections of art and science in education, and adding outside-of-the box activities to standard curriculum.

"We introduced the interwoven history of science and art, and the importance of observation skills in both disciplines. The teachers participated in multi-sensory activities that hone observation skills, and could be applied to future interdisciplinary lesson plans, especially during visits to our sites," explains Calla.

Calla and Nickel invited local teachers for a 2-part professional development opportunity that could be applied to their required continuing education credentials. Ten teachers from across disciplines joined the training sessions which focused on

innovative activities integrating both arts and science in outdoor environments. These activities and observation techniques lend themselves to application at The Ringling Museum, Marie Selby Botanical Gardens, and even in the school yard.

The first session was held at The Ringling Museum, with a focus on the overlapping nature of art and science, and utilizing an art museum's collections to address both artistic concepts and scientific content. For the second session, Selby Gardens' exhibition, *Gauguin: Voyage to Paradise* provided a framework to illustrate nature as inspiration for art, and how to use art ultimately as a scientific tool. Within the Gardens, Calla and Nickel focused on capitalizing students' excitement and curiosity when teaching a class outdoors. While exploring the Tropical Conservatory, the Ann Goldstein Children's Rainforest Garden, and the Succulent Garden, the educators were introduced to visual, performing, and language arts activities that present access points to science content such as the scientific method, biodiverse ecosystems, and plant adaptations.

The project shared the importance of using our community's natural resources, cultural activities, and museums as resources to enliven classroom curricula with exciting and meaningful experiential learning that can engage and spark curiosity in students.

To arrange an outdoor exploration for your class at Selby Gardens, visit [www.selby.org](http://www.selby.org) or contact [schools@selby.org](mailto:schools@selby.org).

## MSBG Botanist Awarded Coveted *National Geographic* Grant

**D**r. Sally Chambers, a research botanist at Selby Gardens, recently received an Early Career Grant from *National Geographic*. Designed for professionals with less than five years of experience, these National Geographic Explorers (grantees) "share a common set of values that guide them as they pursue a better understanding of our planet and its critical interconnections. We expect our Explorers to wield their collective power to change the world, and we actively seek to help them network and connect more deeply with *National Geographic* and each other."

An excerpt from Dr. Chambers' application reads... "Islands, by definition, are isolated, and this isolation has been known to lead to the evolution of new species." Dr. Chambers' project seeks to examine fern diversity on the Lesser Antillean island of Dominica along different elevations, examining the distributions of both juvenile and mature ferns.



Juvenile ferns, known as gametophytes, exist as small nondescript figures making their identification quite complicated. Utilizing molecular tools, she will identify fern gametophytes to species, and will use a phylogenetic approach to understand how ferns assemble into communities across a particular elevation. This approach will also identify lineages and/or species that may be particularly vulnerable to the changing climate. She will share her results directly with local collaborators and government officials to draw attention to fern diversity on the island and the need to conserve them.

## A TOP 18 Garden Plant Shop



**T**he Selby Gardens' Shop was recently recognized as one of *Veranda Magazine's* 18 Best Local Flower Shops in the U.S.

As the Gardens rotate our own collection of plants, the shop in turn does the same and many of the most fascinating plants in the Garden can actually be found in the Shop. Plants for sale range from familiar to exotic, and include peculiar plants such as:

- *Aechmea Del mar*, a hybrid plant that is easy to grow in a landscape or indoors, with blue and hot pink blooms.

- *Dendrochilum glumaceum*, a unique orchid known for its profusion of flowers when in bloom, and is very rarely found in garden shops.
- *Selaginella uncinata*, a type of clubmoss known as "rainbow moss" for its changing iridescent blue-green and even orange leaves.

"When our guests leave the Shop we want them to feel like they have left with a piece of Selby Gardens. With a rotating display, we can showcase some fairly unique plants from our Gardens that are typically not available in your standard garden store," explains Judi Cox, Director of Visitor and Retail Services.

The Garden Shop also brings the outdoors in, with a collection of nature and floral inspired jewelry, bags, glassware, tea and other mementos.

The Garden Shop is open and accessible daily, 10 a.m. to 5 p.m. Therefore, if you are looking for the perfect orchid or even a hostess gift, the Shop may have just what your green thumb is searching for.



# GAUGUIN

## Voyage to Paradise

according to  
**FINANCIAL TIMES**



**Robin Lane Fox**, an English classicist, ancient historian and gardening writer, featured the *Gauguin: Voyage to Paradise* exhibition in his *Financial Times* column on March 1. Below is his article. (Reprinted courtesy of the *Financial Times*)

A garden is integral to the very idea of paradise. The artist most readily associated with paradise on earth is Paul Gauguin, famous for his paintings on Tahiti and the remote Marquesa islands. Until June 30, the Marie Selby Botanical Gardens in Sarasota, Florida, is running a show called *Gauguin: Voyage to Paradise*.

Florida is still billed as “paradise” in brochures and the Selby garden has the world’s biggest collection of epiphytic orchids, the type which grows on other plants. Partly with their help, its tropical greenhouse evokes the paradise which Gauguin sought in the Pacific Ocean. A small art exhibition shows images of Tahiti as it was in the 1890s when Gauguin arrived by boat. As French colonialism and Christian missions were already well advanced, paradise, he found, was elusive.

The show’s treasures are 10 of his woodcuts and lithographs. He was a genius of the genre but on the Pacific islands, he had to work with simple self-made tools. These images deteriorate if exposed to full daylight. They are much less often seen than his paintings.

Gauguin’s career still resonates with male financiers in early middle age. He became a broker on the Paris exchange but gave up, aged 35, after the crash of 1882. He spent a few years trying to sell tarpaulins to the Norwegians. He then went off to impoverished Brittany to pursue his obsession, painting. He visited the island of Martinique. Aged 42, he left his wife and five children in Paris and decamped to Tahiti.

Between 1885 and his death in 1903, his paintings included scenes of Polynesian girls, often topless or naked. Many of them wear flowers behind one ear and are set against lush nature. They have become a battleground for indignant feminists and anti-colonialists. Others, like me, continue to marvel at

their composition, their brilliant colours and their way of implying more than they make explicit. They often use flowers and trees as symbols.

In the Selby garden’s main greenhouse Mike McLaughlin, head of horticulture, and Angel Lara, maestro of orchids and tropical culture, have faced rather different problems. One has been how to conjure up a paradise for Gauguin when their collection already evokes it through tropical greenery and orchids.

Whereas many of Selby’s special orchids are epiphytic, Tahiti’s are terrestrial, growing at ground level. The gardeners have decided to use their collection’s strengths but to add features to evoke life on the Pacific islands. They have planted a circle of bromeliads with blazing red bracts to suggest the firepits Gauguin knew around Polynesian houses. On wires and tall bamboo sticks they have set Pacific coconuts, hollowed out to make homes for flowering orchids. Little canoes have been carved from single blocks of wood and filled with sub-tropical begonias and rich dendrobium orchids. There is also a musical setting. Gauguin admired the traditional Tahiti songs and in the 1960s a selection was performed and recorded. They accompany visitors through Selby’s indoor walk.

The most famous flowers in Gauguin’s paintings are hibiscus and scented tiare, the flower which is worn by girls on Tahiti. If they are single and unattached, they wear it behind their right ear; if not, behind their left. Tiare is *Gardenia tahitensis*, intensively cultivated on Pacific islands. In a tropical greenhouse, Lara realised, it would soon flag and attract mealy-bugs. Hibiscus is also unhappy indoors in heat, so both of Gauguin’s iconic flowers have been planted outdoors.

In one of them a grass hut has been recreated among white sand and palm-trees. and the sea

beyond the hut smiles at the Ringling causeway. “The sun returns; the lofty coconut trees lift up their plumes again,” Gauguin wrote in his journal, “man does likewise...the sea smiles.” In Sarasota, the sea smiles towards the Ringling causeway bridge, built by John Ringling, the master-impresario of the circus. Circus elephants helped to build its first version.

The audience at the show’s opening was addressed by Gauguin’s great-granddaughter, Mette Gauguin. Herself a printmaker and a keen gardener, she descends from Gauguin’s marriage to his Danish wife. He then married three other young “wives” in the Pacific islands. Girls there were married at the age of 14, just as they once were in classical Athens, the admired parent of western civilisation. When Mette visited the Marquesa islands, she asked to meet descendants of Gauguin. She was greeted by a crowd of girls, the results of many post-Gauguin marriages at very young ages since 1903. She invited them to look around their kinswoman’s boat. Their main interest, she recalls, was its minibar, whose contents they promptly cleaned out.

In notes written on Tahiti, Gauguin contrasted the “amorous passion of the Maori courtesan” with the “passivity of a Parisian cocotte”. There is a “fire”, he wrote, in the blood of Polynesian girls. Nonetheless, he considered they spoke with love, not just with material calculation.

In paintings and woodcuts, he related them to biblical, Christian and even classical imagery. In a woodcut in the show he presents pagan Europa being abducted by a bull, the Greek god Zeus in disguise, while a peacock looks down, the classical symbol of Zeus’s jealous wife Hera. Significantly, a Polynesian girl stands beside the bull’s front. Gauguin drew ideas from printed images which accompanied him in books. Poses from Buddhist sculptures in Java and even from the Parthenon

in Athens underlie poses adopted by his figures. Mette also stresses his interest in theosophy, the theory, fashionable in the 1880s, that all religions trace back to the same source. In the Pacific, Gauguin inter-related Christian angels, Buddhist poses and Polynesian figures.

Gauguin’s notes and journals do not endorse French colonialism or the superiority of western civilisation. He learnt Maori. He deplored Protestant “hypocrisy” and wrote a satirical magazine about French administrators. He credited Tahitians, though “savages”, with skills and understanding which westerners lacked. He struggled to survive on native food but he had to resort to French brandy. On flowers and gardens he also had a double range.

Long before he left for the Pacific, some of his earliest paintings had been of flowers, in an Impressionist style. On Tahiti he continued to paint flowers, aware that in Paris they were more likely to sell than puzzling Polynesian figures. When he learnt of the death of his daughter Aline, he commemorated her by painting a vase of Pacific flowers, not a scene of Polynesian myth. In October 1898, I have just found, he wrote to his close friend Daniel de Monfreid in Paris and asked for items for the “plantation” around his Polynesian house. He requested dahlias, nasturtiums and sunflowers, thinking they would survive the heat.

Was he a botanical imperialist, ignoring native flowers? Not really. He noticed that the islands had only a very few annuals. The flowers he requested were flowers beloved by artists in France, by Monet, Renoir and of course Van Gogh. They were also flowers he had painted memorably before leaving France. He told Monfreid: “I adore flowers.” How lucky for us. His flowers are not only flowers on Tahiti which seemed to point to paradise lost. They are also flowers which travelled in his mind, from gardens and images in his own early life.

**Celebrate Gauguin’s connection to France at this Alliance Française de Sarasota private event. See below on how to register.**



### JULY 14 BASTILLE DAY GALA

Sit down to a gourmet dinner at Michael’s on the Bay at Selby Gardens and enjoy Tangi Colombel and French cabaret Bal Musette.

Presented by: Alliance Française de Sarasota

**\$75 per person**  
For tickets or information call  
**Michelle at: 941-955-0700.**  
[www.afsarasota.org](http://www.afsarasota.org)





# Team Selby Gardens visits COSTA RICA

Photo by Berti Benbanaste on Unsplash

**T**his past March, a cross-section of Selby Gardens' staff ventured to Costa Rica for two weeks to forge deeper connections with colleagues in Costa Rica.

Costa Rica is a magnet for biologists due to its biodiversity, topography, established field stations, friendly people, and rich culture. Botanists at Selby Gardens worked extensively in Costa Rica in the 1990s, and occasionally since, conducting scientific studies and botanical inventories.

**The team established five goals for the March trip.**



**1. Visit the Monteverde Cloud Forest Reserve**, northern Puntarenas Province. At the invitation from the Friends of Monteverde, Bruce Holst, Vice President for Botany and Dr. Sally Chambers,

Research Botanist, met with the scientific staff at the Reserve to learn about their work examining the effects of climate change on epiphytic plants, to discuss the possibility of helping establish a botanical garden near Monteverde, and to conduct botanical inventories. Selby Gardens published the first guide to the epiphytes of Monteverde in 1993.



**2. Attend the Third Costa Rican Botanical Garden Conference** held at the Tropical Agricultural Research and Higher Education Center (CATIE), Turrialba Province. Bruce Holst was invited to give the keynote presentation on how bromeliads are used by botanical gardens for programs of conservation, display, research, and education. CATIE and Selby Gardens also discussed the idea of conducting a botanical inventory of their epiphytic flora, which is very rich in bromeliads.



**3. Visit the Los Cusingos Preserve**, San José Province. Bruce and Sally were joined by Angel Lara, Director for Glasshouse Collections, and Jeannie Perales, Vice President for Museum Exhibits, Learning & Engagement for a tour of the Preserve. The tour was led by Gabriel Barboza, former Selby Gardens Intern (1994) and miniature orchid expert. The property is the former home and grounds of Alexander Skutch, world-renowned ornithologist.



*Drymonia decora* "orange form"

**4. Visit the Boracayan Wildlife Refuge**, San José Province. The team visited the Refuge to examine plants and populations of two endemic species described by Selby Gardens' staff following a major Selby-led expedition in 2003. While no plants were seen in the wild, both species are under cultivation by horticulturists on nearby properties, who provided seed and cuttings for Selby Gardens. The staff hopes to return to the Refuge later this year to do a more thorough search of the property to relocate these species in the wild and potentially identify new populations.



**5. Visit Boruca.** Finally, the team traveled to the remote village of Boruca (Puntarenas Province), home to the artists who create the Borucan masks displayed annually in the *Rainforest Masks of Costa Rica* exhibition. They met with the Borucan mask artists and community leaders to discuss a botanical inventory of their indigenous lands, with a focus on epiphytes and medicinal plants. During the visit, the team worked with local school children to teach them about nature observation and the mask exhibition at Selby Gardens. As well, they offered a presentation about Selby Gardens to a cross-section of the community.

The trip left Selby Gardens staff feeling confident that there is much to do, and many avenues for contribution and mutual collaboration in Costa Rica. Follow up on each of the projects listed above is currently underway, and some of the staff anticipate returning to the country to begin work as early as November of this year.



# Program Excellence Award for Collaboration in Belize

Selby Gardens is a recipient of one of two Program Excellence Awards given by the American Public Gardens Association (APGA) for a four-year partnership entitled "Air Plants and Other Epiphytes of Belize: A Collaborative Project Between Two Botanical Gardens and a University."

A Selby Gardens representative will accept the award during the APGA Annual Conference in Washington D.C. June 17-21, 2019.

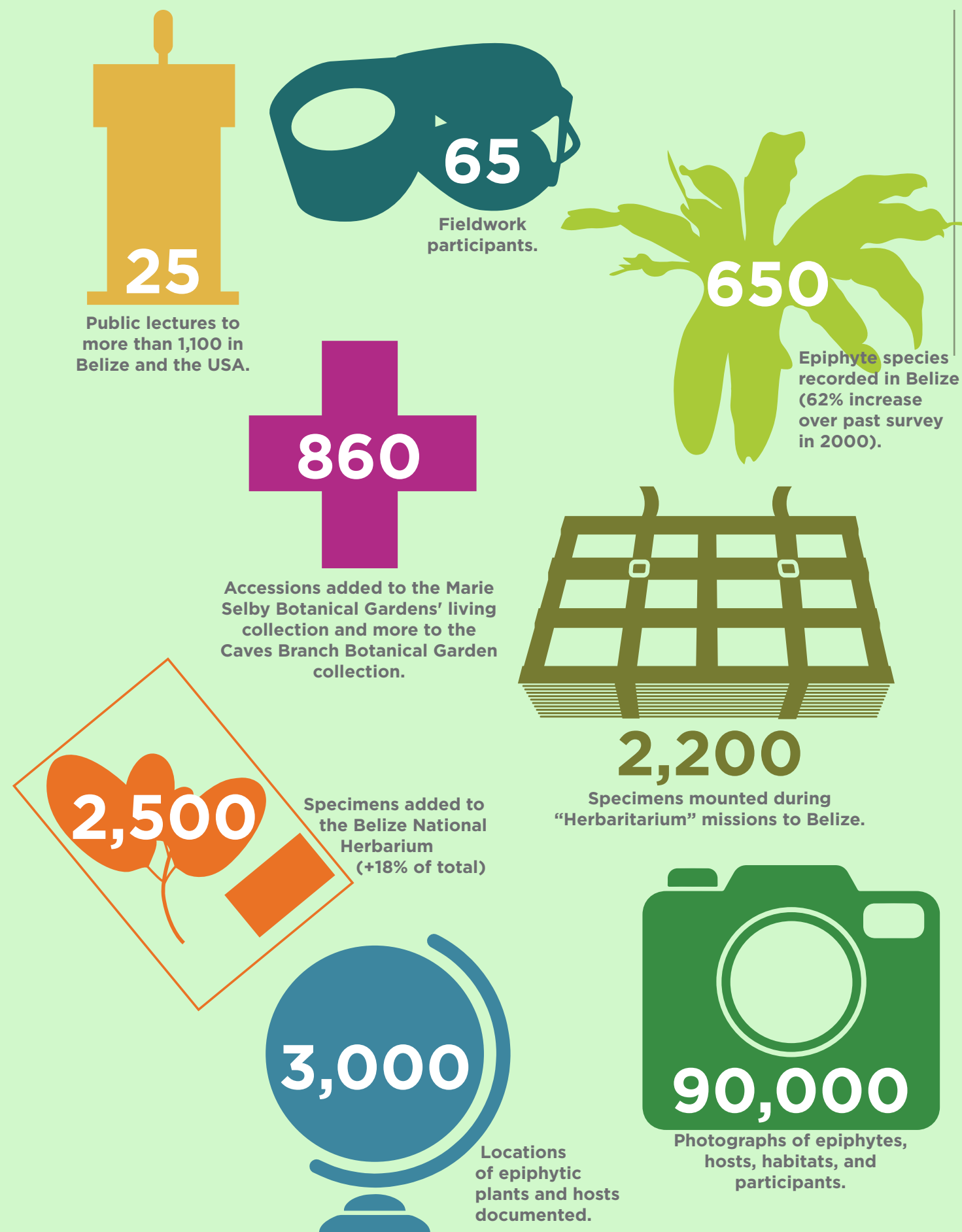
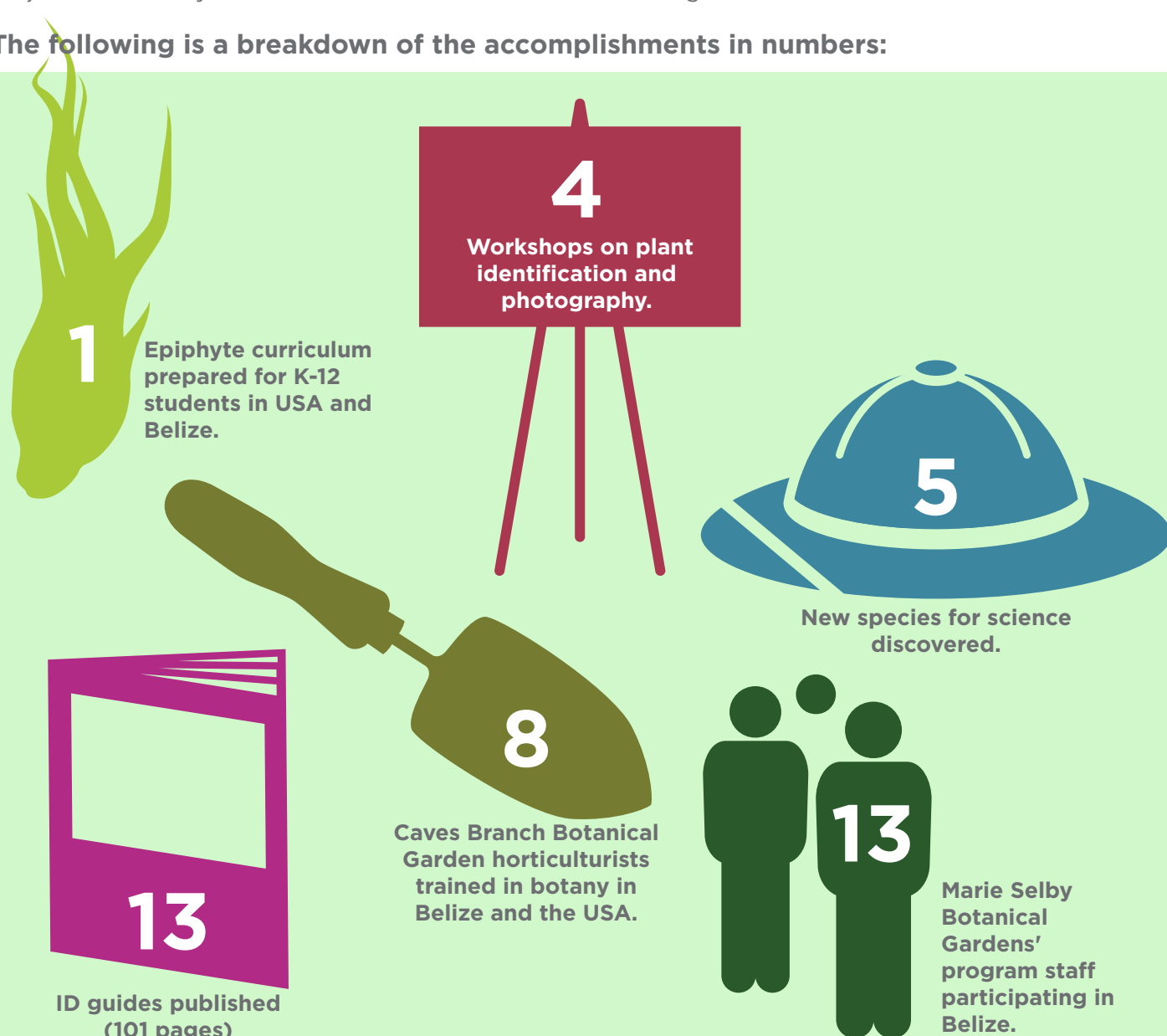
The four-year partnership with Ian Anderson's Caves Branch Botanical Garden and the University of Belize-Environmental Research Institute was the most integrated multi-year collections-based project the Botany team has undertaken at the



**American  
Public Gardens  
Association**

Gardens. Ninety percent of the funds, outside of salaries, were provided by donors and the benefits to our joint institutions are notable. While Botany took the lead, volunteers and various departments contributed significantly to the project including obtaining collections for our displays and herbarium, publishing education guides, and conducting botanical research.

The following is a breakdown of the accomplishments in numbers:



# Celebrate **SELBY!**

39TH ANNUAL JURIED PHOTOGRAPHIC EXHIBITION

SEPTEMBER 7-29, 2019

OPENING RECEPTION & AWARDS PRESENTATION FRIDAY, SEPTEMBER 6, 5:30 - 7:30 P.M.



2018 Best In Show winner, "Grace" by Matt Maier.

Show what Selby Gardens means to you by sharing your photography during our 39th annual juried photo exhibition. There are five categories to present your most thoughtful, fun and inspired photographs that depict the scenery of Selby Gardens. Cash prizes will be awarded in five categories, plus an overall "Best in Show" winner will be named.

Entry forms and full rules are available at [selby.org](http://selby.org). Contact Laura Avery, Manager of Classes & Exhibits, for questions at 941-366-5731 ext. 239 or [education@selby.org](mailto:education@selby.org).

## CATEGORIES:

- Favorite Selby Scene
- Plant Life at Selby
- Selby Gardens' Geometry
- Selby's Birds, Bugs & Critters
- Selby in Black & White

## SUBMISSIONS DUE BY:

By mail: August 28, 2019

Hand-delivered: August 28 & 29, 11 A.M. - 6 P.M.



## SAVE THE DATE: Orchid Show 2019 October 12 to November 26

Orchids are revered for many reasons. Their colors. Their taste (hello, vanilla). Their staggering variety. Even their once-believed health benefits. But mainly, it is the many forms that compose this most diverse plant family that first captured imaginations and continues to do so today.

Join us this fall as we celebrate orchids during the 2019 Orchid Show. Opening October 12 and running through November 26, this year's Orchid Show will once again amaze visitors with never-before-seen

displays of orchids that celebrate the plant family's diversity.

An accompanying exhibition in the Payne Mansion's Museum of Botany & the Arts will tell the tale of this family whose beauty and intrigue has instigated passionate hunts through remote terrains in search of another exotic bloom. Related classes, lectures and events will be announced late this summer at [www.selby.org](http://www.selby.org).

# 2019 In Dialogue with Nature: GLASS IN THE GARDENS

Museum of Botany  
and the Arts

JULY 13 - AUGUST 25

Opening Reception  
July 12

Selby Gardens and the Duncan McClellan Gallery (DMG) in St. Petersburg will be partnering again this year to present the second annual glass show in the Museum of Botany & The Arts and Gardens. The enthusiastic response to the first glass show collaboration last year has sparked the creativity of the DMG glass artists to make more botanically-themed work for the upcoming show. Each artist uses their own unique talents to create pieces that reflect the beauty of nature here at Selby Gardens.

The show will open with a reception on July 12, 5:30 to 7:30 p.m. Be sure to register at [selby.org](http://selby.org) as space is limited. The show will run through August 25 and the glass work will be available for purchase with a percentage of sales benefiting Selby Gardens. Lectures and tours will also be offered in conjunction with the show.

## SCHEDULED ARTISTS:

Duncan McClellan	Marie Bass
Claire Kelly	Mark Chatterly
Danyell Bauer	Ravens
Demetra Theofanous	Naoko Takenouchi
Eli Cecil	Nikolai Morse
Eric Claycomb	Peter Wright
Jen Violette	Pods
Josh Coccozza	Tommie Rush
Doug Merritt	Walter "Scottie" Wald
Lisabeth Sterling	Jaya Hart
	Vasile Loznianu

DUNCAN McCLELLAN



"Hibiscus Vessel" by Duncan McClellan



"Drawn to the Flame" by Duncan McClellan



"Sunflower" by Duncan McClellan





GARDEN MUSIC SERIES

AT SELBY GARDENS

Join us on the Great Lawn once-a-month from **1 to 3 P.M.** for eclectic Garden Music Series performances:

**MAY 9** Alexis Cole

**JUNE 16** Ari and the Alibis

**FREE** with general admission.

THE WESTIN  
SARASOTA



**SUNDAY, MAY 12**

**10:30 A.M. - 3 P.M.**

With sweeping views and an exquisite buffet at Michael's on the Bay at Selby Gardens, mothers are sure to have a delightful day.

**Members: \$70**

**Adult Guests: \$80**

**Children 4-11: \$30**

**Under 4: FREE**

Visit [selby.org](http://selby.org) for tickets and seating times.



**JULY 4 6-9:30 P.M.**

Celebrate the 4th of July at beautiful Selby Gardens. Listen to live music, savor All-American favorites, take part in a variety of family and children's activities, and enjoy the fireworks!

**General Admission: General**

**Public: \$35 / Members: \$25**

**12 years and younger: \$10,**

**0 - 3 years: FREE**

**SELBY EXPERIENCE** passes include valet parking, open bar, food and prime viewing for the fireworks from Michael's on the Bay at Selby Gardens. \$100

Visit [selby.org](http://selby.org) for tickets.



**SATURDAYS, JULY 6,**

**13, 20 and 27**

**10 A.M. to NOON**

Cool off with water activities, slides and games in the shade of the iconic Selby Gardens banyan trees.

**FREE to members. Included with regular admission. Under 3 free.**

MICHAEL'S  
ON EAST



# TRUSTED PARTNER FOR WEDDINGS & PRIVATE EVENTS

The award-winning Michael's On East organization is privileged to serve as the official culinary partner for Marie Selby Botanical Gardens, proudly operating the Selby House Café and catering all private events on the grounds.

Whether you envision an elaborate garden wedding, stunning backdrop for a business function, or a modern affair under the stars, the Gardens provide an ideal one-of-a-kind oasis for a variety of functions.

Whatever type of event you may be planning, Michael's Event Sales Director Amy Allen is ready to assist you in providing a tour of the Gardens venues and carefully preparing all the important details related to your event!

Learn more about hosting your own private event at Selby Gardens by contacting Amy Allen at Michael's On East: 941-366-0007, ext. 238 • [amy.allen@bestfood.com](mailto:amy.allen@bestfood.com)



Selby Gardens' Garden to Plate Wine Dinner celebrated on the Great Lawn on March 8, 2019.







20

# YEARS of SERVICE

*Celebrating 20 years at Selby Gardens, Lisa Wade, Horticulture Coordinator, reflects on her time here and how her horticulture career began.*

## How long have you worked at Selby Gardens?

I have worked at the Gardens since February 16, 1999 – a little over 20 years.

## Why do you like working at Selby Gardens?

Selby is an amazing work environment. The plants, people, and projects give me daily, (if not hourly); opportunities to learn new things.

## When did you first become interested in horticulture?

I became interested in horticulture at a young age helping my grandmother tend her garden of vegetables and flowers. I lost touch with gardening for many years after that, but then I became interested in it again in the late 90's after watching a gardening series on HGTV. One episode mentioned a master gardening program. I checked, and discovered that Sarasota County had a program, to which I then applied and was accepted in to. Not long after completing my training, one of my former classmates, who had recently been hired at Selby Gardens, called and mentioned there was a part-time gardening position at Selby. I applied, and the rest is history. :-)

## What other roles or positions have you been in at the Gardens?

I started off as a part-time gardener, moved into a full-time role, and then held supervisory positions, as both Gardens Supervisor and Gardens Manager. I stepped down from management, because I wanted to spend more time working with the plants. I managed the outside plant collections, nurseries, and was a Senior Gardener, assisting the Gardens Manager, and helping to maintain the irrigation system. Overall, I have cared for many of the outside garden spaces over the years.

Currently, I am the Horticulture Department Coordinator, which gives me the best of both worlds. I get to take care of the little details, everything from ordering supplies to responding

to horticulture questions from visitor emails. With my experience in the outside gardens, I am a resource for the horticulture staff, and I regularly assist out in the Gardens and answer questions about the irrigation systems and the many plants.

## Over the years of working here, has there been a standout memory or experience?

It's hard to say, I think one of my proudest moments was breaking ground in the summer of 2007 (literally, I operated the tractor and dug the first hole) for a much needed replacement of the irrigation system from the Selby House down to the south point. I spent quite a bit of time keeping the aging system operational up to that point, and I was so thrilled when the development department was finally able to secure the grants to fund it. I am equally excited about the current Master Plan and look forward to seeing the Gardens and our valuable collections, both living and nonliving, better secured.

## What was one of your favorite exhibits to work on at the Gardens?

There is a certain amount of excitement and challenge with the implementation of any new exhibit, whether it's permanent or temporary. The permanent exhibit that I most enjoyed working on was the renovation of the Koi pond area in 2008. I had the amazing opportunity to work with two of my favorite subjects, fish and plants. I oversaw the installation of a much needed upgrade to the pond filtration system and a major overhaul of the plant material in the area, along with the addition of new paved paths and the installation of the temple bell.

My favorite "temporary" exhibit was the 2016 Orchid show, 'Secret Garden', where I got to help transform parts of the Tropical Conservatory into "abandoned" victorian garden spaces. I assisted with the installation of two water features, the Garden pond, and a tiered fountain. I had fun "aging" the fountain with mosses and plants from the greenhouses.

# Nathalie McCulloch, 1920-2019

*Long time Selby Gardens volunteer and donor passes away.*



Selby Gardens lost its longest serving volunteer, as well as a benefactor and friend, on Jan. 30 when Nathalie ("Nat") W. McCulloch passed away.

Born in Winchester, MA, in 1920, Nat was educated at the Brimmer School in Boston (now Brimmer and May) and Erskine College in South Carolina. She married John McCulloch, a CPA. They lived first in Scarsdale, NY, where Nat began her long history of community service as chair of the Red Cross chapter and the Visiting Nurses Association and on the board of the Women's Exchange. They later moved to Short Hills, NJ, where she was president of New Eyes for the Needy and on the boards of Neighborhood House and the Community Fund.

In 1976 the McCullochs moved to the Sarasota area, living on Casey Key and Golden Gate Point. John passed away in 1990. Nat most recently lived in the Plymouth Harbor retirement community near downtown Sarasota.

A self-described "professional volunteer," Nat began volunteering at Selby Gardens in 1983 and continued her service in the Administration building until shortly before her death. As a volunteer receptionist every Friday, she was known for greeting staff and visitors alike with a smile. Earlier she served a term as president of Friends of the Gardens-Selby Associates.

A longtime donor and member of Selby Gardens'

Chairman's Circle, Nat made the first financial commitment to support the Gardens' Master Site Plan with a major gift to name the new library in the Plant Research Center.

"Nat McCulloch was well-known and loved throughout the community," said Jennifer O. Rominiecki, Selby Gardens President and CEO. "For Selby Gardens, Nat was a personal treasure as well as an important part of our history. We are deeply honored by her generous gift to our planned library, and we look forward to seeing her name at Selby Gardens for decades to come."

Nat's other civic and philanthropic activities in Sarasota include serving as president of the Golden Gate Point Neighborhood Association, and on the boards of Friends of the Selby Public Library and Friends of the Sarasota County History Center. She also chaired the Sarasota County Library Board. She made a major donation to fund The Center for Architecture, Sarasota, whose McCulloch Pavilion bears her name.



# COMMUNITY CLASSES

Marie Selby Botanical Gardens offers a wide variety of classes taught by experts in their field. Whether you want to brush up on your watercolor skills or create a scrapbook, get your hands dirty planting orchids or improve your photography, or even if you just want to start your day with relaxing yoga, there's a class for you.

## ART CLASSES



### Beginning Watercolor

**Session I: May 6, 13 & 20**

**Session II: June 3, 10 & 17**

**Session III: July 8, 15 & 22**

**Session IV: August 5, 12 & 19**

**10:30 a.m. – 2:30 p.m.**

Beginning with the basics, each of the three classes in the session focuses on demonstrations and a variety of watercolor techniques as students paint along with the instructor. See Materials List online.

*Instructor: Carolyn Merenda*

*Class Fee per Session: \$140 (Members \$125)*

### Intermediate Watercolor

**Session I: May 7, 14 & 21**

**Session II: June 4, 11 & 18**

**Session III: July 9, 16 & 23**

**Session IV: August 6, 13 & 20**

**10:00 a.m. – 2:00 p.m.**

Each three-class session focuses on demonstrations and a variety of watercolor techniques. Students with some previous experience will enjoy the freedom to experiment, create their own compositions, or paint along with the instructor. See Materials List online.

*Instructor: Carolyn Merenda*

*Class Fee per Session: \$140 (Members \$125)*

### Introduction to Sumi-e

**May 2**

**10:00 a.m. – 2:00 p.m.**

Enjoy capturing the natural emotions and vibrancy of the gardens as you learn the simple, spontaneous brush strokes of Sumi-e. Using black ink and splashes of color, traditionally create the beautiful lines and forms of bamboo, flowers, branches and koi. No experience required. All levels welcome. Bring water container and paper towels. Instructor will supply all necessary materials for a fee.

*Instructor: Marcy Chapman*

*Class Fee: \$65 (Members \$50)*

*Materials Fee: \$15 (pay instructor)*



### Hand Built Pottery – Make your Own Pot!

**May 3 & 10**

**10:00 a.m. – 12:00 p.m.**

You will learn to work with clay from start to finish using several pottery hand building techniques like pinch, coil, slab and sculpting. You also learn to make and fasten separate finishing pieces like lids, handles and knobs. The end result will be

your own clay creation. This will be a 2-part series: the first class will be creating your pieces and the second class will be glazing your pieces after it is fired in a kiln. You will then pick up your finished piece within a week after the 2nd class. Please wear old clothes. Instructor will provide materials.

*Instructor: JoAnn Mancuso*

*Class Fee: \$ 75 (Members \$65)*

*Materials Fee: \$20 (pay instructor)*



### Spritzing, Spattering, Sponging, French Rule & More Advanced Watercolor Techniques

**May 16**

**10:00 a.m. – 4:30 p.m.**

In this special workshop with Academy of Botanical Art Founder, Olivia Braida, learn various advanced watercolor skills that enhance your paintings. Stay true to the techniques of building colors through layering, but learn several methods for applying paint to achieve a three-dimensional effect and new methods that accomplish similar traditional effects while speeding up the process, building confidence, and creating your personal touch. Bring all your paints and brushes. Instructor will supply several special tools

and paper to help accomplish our goals. Please see supply list online.

*Instructor: Olivia Braida*

*Class Fee: \$160 (Members \$135)*

*Materials fee: \$35 (pay instructor)*

### Introduction to Ikebana

**May 17**

**10:00 a.m. – 2:00 p.m.**

Discover the pleasures of this ancient Zen art as you learn to create spontaneous, understated and decorative flower arrangements using branches, flowers and leaves easily found around your home and garden. No experience necessary. Instructor will furnish materials. Bring garden scissors, paper towels and a creative spirit.

*Instructor: Marcy Chapman*

*Class Fee: \$65 (Members \$50)*

*Materials Fee: \$35 (Pay instructor)*



### Art of the Quick Sketch in Watercolor or Oil

**May 22**

**1:00 – 4:00 p.m.**

Whether you are a beginner or more experienced painter, sketching in paint can be a valuable and productive exercise and sharpen one's ability to "see". This workshop will focus on how to capture the essence of your subject in paint. Composition, values, drawing with paint, and selection of essential elements will be addressed, as well as direct painting "alla prima" and color mixing. See Materials List online.

*Instructor: Joyce Ely Walker*

*Class Fee: \$65 (Members \$50)*

### Gelli Plate Printing a la Gauguin

**May 24**

**10:00 a.m. – 3:00 p.m.**

Experience the joy of mono-printing without a press thanks to the gelli plate, a product that looks and feels like gelatin and can be used again and again. In recognition of the Gauguin exhibit, special emphasis will be placed on printing leaves and flowers from Selby Gardens Botanical Paradise. We will create one of a kind prints using textures, stencils, household items and acrylic paint. Once you start you won't want to stop!

*Instructor: JoAnn Migliore Campisi*

*Class Fee: \$65 (Members \$50)*

*Materials Fee: \$5 (pay instructor)*

## HEALTH & DISCOVERY

### Yoga in the Gardens

**Session I: April 29 & May 6, 13, 20**

**Session II: June 3, 10, 17 & 24**

**Session III: July 8, 15, 22 & 29**

**Session IV: August 5, 12, 19 & 26**

### Yoga II in the Gardens

**Session I: May 1, 8, 15, & 22**

**Session II: June 5, 12, 19 & 26**

**Session III: July 10, 17, 24 & 31**

**Session IV: Aug. 7, 14, 21 & 28**

**10:00 – 11:00 a.m.**

Start your week off right by treating yourself to a peaceful mind/body Yoga experience in our beautiful Gardens. Focus is on alignment, breathing techniques and relaxation. For beginners as well as advanced students.

*Instructor: Michelle Roy*

*Class Fee per Session: \$75 (Members \$55)*



### Summer Yoga Pass

**Valid April 29 through August 28, 2019**

This is an eight session registration option for students who want the freedom to come for eight sessions, but may not be able to attend them all in consecutive months. The Summer Yoga Pass offers students flexibility to choose any eight of the scheduled yoga classes offered from May through August. Purchase Pass before April 29 online; after April 29, purchase in Welcome Center.

*Instructor: Michelle Roy*

*Pass Fee: \$150 (Members \$110)*

### Introduction to Nature Writing Retreat

**May 8**

**10:00 a.m. – 3:00 p.m.**

Can a bromeliad be a narrator? Why not? This class is designed for new and experienced writers to learn the basic techniques of nature writers and to create a writing project. You will be guided with techniques to observe and "see" nature in a new way, experiment with finding the "voice" of nature and discover the power of your own words. This class will include spending time in the Gardens for

inspiration. Learn the steps writers practice to create ideas, produce story outlines, and immerse into character development culminating in a finished writing project. Whether your genre is memoir, journaling, poetry, fiction or non-fiction, the techniques presented will enrich and enliven your work. Join journalist/meditation instructor Gail Condrick for this special event. No prior writing experience is necessary. Bring a journal and a pen.

*Instructor: Gail Condrick*

*Class fee: \$65 (Members \$55)*

## HORTICULTURE



### Hydrosols – The Next Aromatherapy – Precious Tools for Wellbeing

**May 15**

**10:00 a.m. – 12:30 p.m.**

Discover the multilayer use of the distillates of aromatic plants, including the aromatic waters of Rose Damascena, Neroli – the Orange flower, Greek Sage, Frankincense, Rose Geranium and Lavender Angustifolia. These gentle and delightful aromatic waters have therapeutic properties and are considerably safer than the concentrated essential oil that comes from the same process. As water is essential to the human body, hydrosols (hydro-water, sol - solution) are well recognized by the body. These aromatic waters can also be found as a delicious flavoring in deserts, complimenting their simultaneous therapeutic value. Taste, smell, and experience food and drinks from these lovely waters and blend some to take home with you!

*Instructor: Patricia Ann Star*

*Class Fee per Session: \$65 (Members \$50) each*

*Materials fee per session: \$5 (pay instructor)*

## CLASS REGISTRATION POLICIES

• **REGISTRATION PROCEDURES (1)** Register online at [www.selby.org](http://www.selby.org) or **(2)** in person at our Welcome Center.

• In the event that a class is cancelled by Selby Gardens, students will receive a full refund. Student cancellations made less than 72 hours prior to class time are not entitled to a refund nor class credit.

• Material lists are available online and can be emailed or mailed upon request.

• Please visit our website for updates and additional information.

• Class sizes are limited - please register early.

• **Pre-Registration is required.** Tuition is due with registration. Pay online or use charge, check or cash in our Welcome Center.

• Registration fees are not prorated. If you do not attend any portion of class, your registration fee is forfeited.

• There are no make-up classes for students who miss a regular class session.

• Proceeds from classes support the Gardens.





### Kokedamo – A Different Bonsai

**May 22**  
**10:00 a.m. – 12:00 p.m.**  
 Kokedama is a style of bonsai in Japanese culture. In this class you will take a fresh plant (epiphyte) and wrap it in a peat-based soil recipe that is designed to hold its spherical shape; then you will fasten moss around it to make a gorgeous little green orb. You will make two of these plants to take home and display. This is a great project that combines nature and art for which the Japanese culture is famous. Instructor will provide all materials.

*Instructor: JoAnn Mancuso*  
*Class Fee: \$50 (Members \$35)*  
*Materials Fee: \$15 (pay instructor)*



### PHOTOGRAPHY

#### Movie Magic – Learn the Basics

**May 1**  
**10:00 a.m. – 1:00 p.m.**  
 The world is telling their stories with video - tell your story! Create simple, well-shot videos for keepsakes and to share on social media for friends and family. Choose documentaries, biographies, stories, vacations or fun skits. You will learn to take advantage of the video features of your camera and simple editing software and ways of sharing your content. Included are basic video shooting, perspective, simple script & planning, camera features, lighting, sound, composition, editing.

*Instructor: Daniel R. Perales*  
*Class Fee: \$75 (Members \$60)*

### Tripod Tuesdays

**May 14, June 11**  
**9:00 – 10:00 a.m.**  
 Selby is offering special access to our Tropical Conservatory before hours. Photographers who register in advance for this special opportunity will be allowed to use tripods to capture images of thousands of orchid and other lush tropical plants during the **Gauguin: Voyage to Paradise** exhibition. Register early as space is limited.  
*Fee per day: \$20 (Members \$15)*



### NEW! Snapseed Editing on Your Mobile Phone

**May 15**  
**1:30 – 3:00 p.m.**  
 Snapseed is a free Google app for both Android and iOS with powerful photo-editing filters you can use on your smartphone or tablet. Learn how to fine tune and enhance your mobile photographs to create beautiful works of art from HDR to dreamy ethereal. Once you learn how to use it, it is addictive!  
*Instructor: Olivia St. Claire*  
*Class Fee per session: \$65 (Members \$50)*



### Creative Camera Techniques

**May 9**  
**10:00 a.m. – 1:00 p.m.**  
 This workshop adapted specifically for Selby Gardens will explore creative composition techniques done in-camera that will give the “wow” factor to your photos no matter what kind of camera you use. We’ll discuss techniques for DSLR cameras, point and shoot and mobile devices. Techniques include using bokeh to

your advantage, angles of light, reflections, pinhole photography, lens techniques including long lenses and fisheye, backgrounds, natural and artificial lighting and more. Lecture will cover techniques and examples and we’ll then visit the gardens for an hour of practice. Come play and learn some new techniques to add variety to your favorite subjects no matter what they are.

*Instructor: Perry Johnson*  
*Class Fee: \$75 (Members \$60)*



### Still Life & Flat Lay Photography

**May 23**  
**10:00 a.m. – 1:00 p.m.**  
 Flat lay photography has become a popular creative trend. Learn how to get into a flow and photograph “top down” from above. Create vignettes, explore props to use, minimalist styles, what to use for backgrounds and how to create backgrounds. Hands on play and photographing. Focus on mobile photography but all cameras welcome. This is primarily a creative class not a technical class. Basic camera settings will be explained. Open to all levels.

*Instructor: Olivia St. Claire*  
*Class Fee: \$75 (Members \$60)*  
*Materials Fee: \$5 (pay instructor)*

## DID YOU KNOW?

The Master Plan is one of 20 Gardens, and the only Florida garden, featured in *Celebrating New American Gardens* at the United States Botanic Garden in Washington, D.C., on view now through October 15, 2019.

## Selby House Renovations and Closures



Renovations to the Selby House will begin this summer. Starting in early July through October, the Selby House Café and the Kids Corner will be closed while we undergo necessary renovations to bring the historic building up to wind codes. The bathrooms were renovated in late 2018 and will remain open. The preservation of the Selby House, and the Payne Mansion, are key components of the Master Plan transformation at Selby Gardens. The Selby House renovations are funded by a generous grant from the **William G. and Marie Selby Foundation**.

A food truck will be on site providing food options to visitors.

Renovations to the Carriage House will also take place, and classes will be relocated to other areas on-site where possible.

## corporate PARTNERSHIPS

Investments made in Selby Gardens by corporate partners help us accomplish our mission of conservation, botanical research, education and beautiful display of the

Gardens’ world-class collection of living and preserved plants.

To become involved, or for more information, contact Ann Logan at [alogan@selby.org](mailto:alogan@selby.org)

## THANK YOU

to our corporate partners.





CHAIRMAN'S CIRCLE

(As of January 2019 )

Sponsor

Mrs. Gerri Aaron\*  
Amicus Foundation  
Aretê Foundation  
Maryann and James Armour  
Bank of America Client Foundation  
Charles and Margery Barancik Foundation  
Mr. and Mrs. Robert G. Bartner  
Better-Gro  
BMO Private Bank  
Community Foundation of Sarasota County  
Mrs. Joyce S. Cooper  
Mr. and Mrs. Howard R. Curd  
Dart Foundation  
Mr. and Mrs. Norbert P. Donelly  
Drs. Andrew and Judith Economos  
Mr. and Mrs. Douglas C. Elder  
Mrs. Jean Weidner-Goldstein  
Gulf Coast Community Foundation  
Mr. and Mrs. Michael H. Klein  
Mr. and Mrs. William L. Knapp  
Mrs. Beverly L. Koski  
Koski Family Foundation  
Mr. Ernest R. Kretzmer  
Rita B. Lamere Memorial Foundation Trust  
Dr. and Mrs. Carlyle A. Luer  
Elaine Nicpon Marieb Charitable Foundation  
Mr. and Mrs. Frank A. Martucci  
Cornelia and J. Richard Matson  
Mr. and Mrs. William L. McComb  
Mrs. Nathalie W. McCulloch\*  
Michael's On East  
Carol L. Miller  
Virginia A. Miller  
Edward D and Anna Mitchell Family Foundation  
Mr. and Mrs. Keith D. Monda  
Drs. Joel and Gail Morrison  
Morganroth  
Northern Trust  
Dr. and Mrs. Thomas J. Russell  
Mr. David J. Sales  
Mr. Joseph A. Strosnik  
Ms. Pauline Wamsler  
Williams, Parker, Harrison, Dietz & Getzen

Co-Sponsor

Allegiant Private Advisors  
Mr. and Mrs. Robert G. Arthur  
Bank of America  
Mr. and Mrs. Robert A. Bernhard  
The Honorable and Mrs. Vernon G. Buchanan  
Mr. and Mrs. Warren J. Coville  
The Doris M. Carter Family Foundation  
The Exchange  
Mr. and Mrs. William Gill  
Ms. Teri A Hansen  
\*Deceased

Mr. and Mrs. Franz J. Hummert  
Mr. and Mrs. Wallace Hyde  
Mr. Dale S. Kammerlohr  
Mr. and Mrs. William L. Knapp  
Kutya Major Foundation  
Mr. and Mrs. F. John LaCivita  
Ms. Marietta F. Lee  
Mr. and Mrs. Thomas E. McInerney  
MISH New York  
Jeff and Vicki Moore  
Mr. and Mrs. Gregory T. Mutz  
PNC Wealth Management  
Mr. and Mrs. George Quester  
Mr. and Mrs. Wayne F. Seidl  
Mr. David E. Sessions  
Mr. and Mrs. Zuheir Sofia  
Mr. and Mrs. Hobart K. Swan  
Mr. and Mrs. Thomas H. Watson

Patron

Ms. Peggy C. Allen and Mr. Steve Dixon  
Anonymous  
Mrs. Libby Besse  
Mr. and Mrs. Gerald Biller  
Mr. and Mrs. Travis Brown  
The Chrisman Foundation  
Ms. Jeanne L. Coleman and Mr. Stephen R. Leinhart  
Ms. Carole Crosby and Mr. Larry Wickless  
Mr. and Mrs. Robert N. Davies  
Mr. and Mrs. Thomas J. Degnan  
Mr. and Mrs. Robert Essner  
Ace & Lillian Fessenden Family Foundation  
Ms. Donna L. Fisher  
Mrs. Shirley Foss  
The Jewish Federation of Sarasota-Manatee  
Ms. Carolyn Keystone and Mr. James Meekison  
Mr. Marvin Kocian  
Ms. Cathy L. Layton and Mr. Pete Russell  
Dr. and Mrs. Bart H. Levenson  
D. R. Long Foundation  
Mrs. Evelyn S. Mink  
Mr. and Mrs. James M. Oates  
Mr. and Mrs. Roy H. Park  
Charlotte and Charles Perret  
Mrs. Alice W. Rau  
Mrs. Florence L. Roberts  
Schloss Family Foundation  
Mrs. Ina L. Schnell  
Harry Sudakoff Foundation  
The Swart Family Foundation  
Ms. Marcia Jean Taub and Mr. Peter Swain  
Mr. and Mrs. William D. Tompkins  
Triad Foundation, Inc.  
Dr. and Mrs. Frederick Wurlitzer  
Judith Zuckerberg Family Foundation

**Benefactor**  
Anonymous  
Ms. J. Allison Archbold, Esq and

Mr. Hugh J. Bettendorf  
Michael R. and Donna J. Baker  
Mrs. Sylvia S. Barber  
Ms. Isabel Becker  
Bob and Willa Bernhard  
Anne and Walter Bladstrom  
Ms. Sherran Blair  
Rose Marie Bowles  
Ms. Barbara Brizdle  
Susan and Jim Buck  
Mr. and Mrs. Robert E. Carter  
Mr. and Mrs. Christopher D. Cianfaglion  
Mr. and Mrs. Ron Ciaravella  
Mrs. Pattie B. Clendenin  
Mr. and Mrs. Christopher Cogan  
Dr. Deborah E. Cohen and Mrs. Maxine Spitzer  
Mr. and Mrs. C. Martin Cooper  
Tom & Katie Cornell  
Mrs. Bette Jo Creighton  
Cumberland Advisors  
Mr. John F. Cuneo Jr.  
Mr. and Mrs. Peter J. Daley  
Mrs. Bernice M. Davis  
Mr. and Mrs. Neil P. DeFeo  
Mrs. Kay DeLaney and Mr. Murray Bring  
Mr. Dan Denton  
Mr. and Mrs. David Denton  
Designing Women Boutique  
Mr. and Mrs. James Dewey  
Mr. and Mrs. Charles A. Eckert  
Leon and Marge Ellin  
Mr. and Mrs. Chris Elser  
Mr. and Mrs. John E. Evans  
Mr. and Mrs. Martin W. Faust  
Bill and Joyce Fletcher  
Mr. and Mrs. William T. Forrester  
Frederick Derr & Company  
Marce Fuller and Lee DeOvies  
Gold Coast Eagle Distributing  
Mr. and Mrs. Robert C. Goree  
Mr. and Mrs. Scott M. Greer  
Mr. David A. Hagelstein and Mr. Stephen Heffron  
Ms. Katherine Harris and Mr. Richard Ware  
Dr. Martha M. Harrison and Peter B. Miller  
Peter and Katie Hayes  
Henson Personal Cardiology and Internal Medicine  
Dr. and Mrs. Alfred D. Hernandez  
Ideal Foundation  
Carolyn and Bob Johnson  
Mrs. Larry S. Kabinoff  
Ms. Amy Jo Katz  
Mr. and Mrs. Thomas L. Koski  
Dr. and Mrs. William J. Lahners  
Mr. Harry Leopold and Ms. Audrey Robbins  
Mr. and Mrs. Thomas B. Luzier  
Mr. Kenneth McKinnon and Ms. Erin McKinnon  
Francis and Barbara Misantone  
Dr. and Mrs. Richard A. Moskovitz

Mrs. Gloria Moss  
Dr. and Mrs. Philip K. Nelson  
Northern Trust Bank  
Mrs. Isabel S. Norton and Ms. Leslie Norton  
Mr. and Mrs. David T. Peirce  
Mr. and Mrs. Peter S. Powers  
Mr. Sandy Rederer  
Ms. Rosemary A. Reinhardt and Mr. David P. Welle  
Sally & Jon Riitters  
Mr. and Mrs. Skip Sack  
Sarasota Magazine  
Mrs. Nancy R. Sheridan  
So Staged Events & Rentals  
Mr. and Mrs. Bayne Stevenson  
Mrs. Betty A. Stewart  
Dr. Laurey M. Stryker and Dr. Charles Stryker  
Mrs. Lois Stulberg  
Ms. Jessica Swift  
Mrs. Sylvia M. Thompson  
Total Wine & More  
In memory of Paul van Antwerpen  
Dr. Richard and Monica Van Buskirk  
Ms. Emily A. Walsh  
Mrs. Elisabeth Waters  
Marianne and Doug Weiss  
John and Myrna Welch  
Ms. Michael Ann Wells and Mr. Dave E. Soltis  
Mr. and Mrs. Daniel A. West  
Ms. Janet Wettlaufer and Mr. Donald Miller  
Robert and Barbara Wetzel  
Mrs. Margaret P. Wise  
Mr. and Mrs. Arthur M. Wood  
Ms. Jane Y. Woods

INDIVIDUAL AND CORPORATE DONORS

(Recognizing gifts given between October 2018 and January 2019)  
AbbVie Employee Engagement Fund  
Dr. Gabriel G. Almeida and Dr. Jana Lynn Almeida  
Amica Companies Foundation  
Amicus Foundation  
Mr. and Mrs. Adam J. Antoszewski  
Mr. and Mrs. John Arch  
Mr. and Mrs. Philip L. Bachman  
Mr. and Mrs. James E. Baker  
Ms. Lesley Baker  
Ms. Maureen A. Ballinger  
Bank of America Charitable Foundation  
Bank of America Charitable Gift Fund  
Mr. and Mrs. Ira P. Barsky  
Mr. and Mrs. Robert G. Bartner  
Mr. and Mrs. Walton Beacham  
Dr. David H. Benzing and Ms. Linda Grashoff  
Mr. and Mrs. O. Gene Bicknell  
Mr. and Mrs. Jerry Birnbaum

Dr. and Mrs. Robert A. Bitterman  
BMO Harris Bank  
Mr. and Mrs. Robert Bobrow  
Mr. Gilbert Bosse  
Mrs. Katheryne K. Bosse  
Ms. Elsie S. Bracken  
Mr. and Mrs. Charles D. Broll  
Mr. and Mrs. Douglas J. Brooks  
Ms. E. Ann Brownell  
Ms. Linda T. Bruemmer  
Mr. and Mrs. Michael Budin  
Mr. Ken Bumgarner  
Bunge North America Foundation  
Mr. John Buonassisi  
Mr. and Mrs. David S. Burton  
Mr. and Mrs. Clyde E. Butcher  
Mrs. Niki J. Butcher  
Mr. and Mrs. Louis W. Cabot  
Ms. Linda Cahill  
Mr. Luis Carrazana  
Mr. Adams Carroll  
Mr. John F. Carson III and Ms. Agnes M. Schipper  
Ms. Dorothy M. Cascio  
Mrs. Liz Cavedo  
Mr. and Mrs. Nicholas G. Cazana  
Ms. Laurie Chandler  
Mr. Charles H. S. Chapman  
Mr. and Mrs. Michael Charles  
Chevron Matching Employee Funds  
Mr. and Mrs. Edward K. Christian  
Mr. Ross M. Cibella  
Mrs. Pattie B. Clendenin  
Mr. Robert H. Cole and Mrs. Eva Marie McKee  
Community Foundation of Sarasota County, Inc.  
Mr. and Mrs. W. Thomas Cook  
Mrs. Trudy Cooke Hall and Mr. Edward R. Hall  
Mr. Robert E. Copeland  
Mr. and Mrs. Michael V. Corrigan  
Mrs. Patricia L. Cote  
Mr. and Mrs. Andrew Crawford  
Dr. and Mrs. David C. Cuthell  
Ms. Shirley Dabringhaus  
Mrs. Jane R. Daganhardt  
Mr. and Mrs. Alfred D'Alessio  
Mr. William Danforth  
Ms. Susan Dangelmaier  
Ms. Ariane M. Dart  
Dr. and Mrs. Carlo R. De Rosa  
Mr. James H. Dean  
Deborah M. Cooley Charitable Trust  
Ms. Virginia deBuys  
Ms. Barbara Delaney  
Mr. and Mrs. Leroy Devol  
Mrs. Nancy Devol  
Mr. and Mrs. Richard L. Diamond  
Mr. and Mrs. Norbert P. Donelly  
Mr. and Mrs. Michael L. Dow  
Ms. Charis C. Downey  
Mr. and Mrs. Murray Duffin  
Mr. and Mrs. Joel E. Dyckes  
Drs. Andrew and Judith Economos  
Dr. and Ms. Lee E. Edstrom  
Edward D. and Anna Mitchell Family Foundation  
Mr. Charles Efflandt

Mr. and Mrs. Douglas C. Elder  
Ms. Jean W. Emery  
Mrs. Marie P. Enander  
Ms. Alison Engel  
Fidelity Charitable Gift Fund  
First Watch Restaurants Inc.  
Mr. Ronald M. Fletcher  
Mr. and Mrs. Jerry Fox  
Mr. and Mrs. John M. Frantz, Jr.  
Mr. Darol E. Fry  
Mr. and Mrs. John P. Gallagher  
Dr. Arthur Gardikes  
Gardikes Family Foundation  
Mrs. Flora Garsten  
Mr. and Mrs. John Gartner  
Mr. and Mrs. Jeffrey Gelfon  
Mrs. Jacqueline Gensemer and Mrs. Michelle Bryan  
Gerald A. and Karen A. Kolschowsky Foundation, Inc.  
Mr. and Mrs. Frederick A. Gewirtz  
Dr. and Mrs. William Gill  
Mr. and Mrs. Anthony Girese, Jr.  
Mrs. Eugenia K. Glasser  
Ms. Isabel H. Goff  
Mr. Peter F. Goldbecker  
Mr. and Mrs. John T. Golitz  
Mr. Samuel P. Gotoff  
Mrs. Carolyn Greber  
Mr. Edward T. Green  
Mr. and Mrs. Jon Griffee  
Mr. and Mrs. Douglas Griffin  
Mrs. Letitia Griffin  
Mr. and Mrs. Stephen Grossman  
Mr. and Mrs. Andrew Grossman  
Ms. LaVerne Gucker  
Gulf Coast Community Foundation  
Mr. and Mrs. Edward R. Hall  
Mr. and Mrs. Andrew Hall  
Mr. and Mrs. James P. Halstead  
Mr. William Hamilton  
Mr. and Mrs. Charles H. Hamilton  
Hamilton Foundation  
Mr. Stuart A. Hammer  
Mr. and Mrs. Philip N. Hammersley  
Mrs. Beverly A. Harms  
Mrs. Liz Harper  
Ms. Christa M. Pfeiffer and Ms. Adele Harris  
Mr. and Mrs. Mike Hays  
Mr. and Mrs. Gary Heard  
Mr. and Mrs. George G. Hicks  
Mr. and Mrs. Michael L. Hicks  
Mr. Robert Ripley and Mrs. Laurin Hill  
Mr. Paul Hoffman and Dr. Lisa Hoffman  
Mr. Richard Hord  
Mr. and Mrs. Everett I. Howell  
Hudson Bayou Neighborhood Assoc, Inc.  
Mr. and Mrs. John M. Huneke  
Ms. Adina Husak and Mr. Jiri Svada  
IBM Corporation Matching Grants Program  
Mr. and Mrs. Paul H. Jacobs  
Mr. and Mrs. Carl R. Johnson  
Mrs. Kathryn G. Johnson  
Mrs. Patricia A. Johnson  
Mr. and Mrs. Poindexter M. Johnson

Johnson Family Trust  
Mrs. Joan Jones  
Mrs. Marie P. Jones  
Mrs. Mary-McLean Jones  
Ms. Hilary P. Jones  
Joseph Richard Matson Trust  
Mr. and Mrs. Michael M. Jowett  
JP Morgan Charitable Giving Fund  
Mr. Dale S. Kammerlohr  
Mr. and Mrs. Alan Kasow  
Ms. Jeanne A. Katzenstein  
Ms. Karen Kaufman  
Mrs. Marilyn Kay  
Kayla Mitchell Foundation  
Mr. Patrick Keeling  
Mr. and Mrs. Jonathan B. Kellogg  
Mr. and Mrs. Donald G. Kelly  
Ms. Barbara Kelly  
Mr. and Mrs. Bruce Keltz  
Mr. Richard Kemmler and Mr. Nicolas Curpluk  
Ms. Anne Kenney  
Mr. and Mrs. Patrick W. Kenny  
Ms. Mary Kenzie  
Mr. Peter Kilmartin and Mrs. Kristine Kilmartin  
Rev. Naomi King  
Mr. and Mrs. Michael H. Klein  
Mr. and Mrs. Bruce M. Kleinberg  
Dr. and Mrs. Matthew Klima  
Mr. Ed Kobee and Mr. Al Usack  
Mrs. Nancy S. Kojima  
Mr. and Mrs. Gerald A. Kolschowsky  
Mrs. Beverly L. Koski  
Ms. Ashley D. Kozel  
Mr. Ernest R. Kretzmer  
Dr. Doug A. Kuperman and Dr. Maureen Maguire  
Mr. and Mrs. Richard Kuster  
Kutya Major Foundation  
Dr. Diana Lager  
Mr. and Mrs. E. Anthony Lamb  
Mr. and Mrs. William G. Lambrecht  
Mr. George M. Lavigne and Ms. Jeannette Ruggiano  
Mr. and Mrs. Edgar Lawrence  
Mr. and Mrs. John Leeming  
Mrs. Patricia J. Lenke  
Mr. Howard W. Lentz, Jr.  
Mr. and Mrs. Don Liebentritt  
Linnie E. Dalbeck Memorial Foundation Trust  
Mrs. Phyllis S. Loewengart  
Mr. and Mrs. James M. Lombard  
Mrs. Kathleen B. Loper  
Ms. Hazel Lue  
Dr. and Mrs. Carlyle A. Luer  
Mr. and Mrs. Vytas Maceikonis  
Ms. LaVerne Mahloch  
Mrs. Jean E. Maier  
Mrs. Flora Major  
Mr. and Mrs. Neil Malamud  
Mrs. Sandra Malamud  
Malco Charitable Foundation  
Mr. and Mrs. Gregory R. Mansfield  
Marcia S. and Michael H. Klein Foundation  
Mr. and Mrs. Julius L. Marcus  
Mr. James Marsey and Rev. Ellen P. Marsey

Mr. and Rev. James Marsey, Sr.  
Mr. and Mrs. Joseph Marsh  
Mr. David A. Martin and Mr. Chester C. Creutzburg  
Mr. and Mrs. Frank A. Martucci  
Mary L Kenzie Foundation  
Mr. and Mrs. Allan Mason  
Mr. and Mrs. Bruce E. Massoth  
Mr. and Mrs. J. R. Matson  
Dr. and Mrs. Martin H. Max  
Dr. Matthew McCall  
Mr. and Mrs. Robert E. McCarthy  
Ms. Ellyn A. McColgan  
Mr. and Mrs. William L. McComb  
McComb Family Foundation  
Mr. Robert L. McCracken and Mrs. Paula D. Mcmillin  
Mrs. Nathalie W. McCulloch  
Mr. and Mrs. James H. McGuire  
Mr. and Mrs. Jay M. McHargue  
Mr. Thomas J. McHugh and Dr. Nansie A. McHugh  
Mrs. Eva Marie McKee and Mr. Robert H. Cole  
Mrs. Kathleen F McKown  
Mr. and Mrs. James W. McLane  
Mr. Mike McLaughlin  
Mr. and Mrs. Craig R. McLeod  
Mrs. Paula D. Mcmillin and Mr. Robert L. McCracken  
Mr. Robert C. Menson and Ms. Margo Waite  
Mrs. Margrit Messenheimer  
Mr. and Mrs. Arthur N. Meyers  
Michael and Kathleen Roberts Foundation  
Ms. Carol L. Miller  
Ms. Sally P. Miller  
Ms. Virginia A. Miller  
Mr. and Mrs. William L. Milligan  
MISH New York  
Mr. and Mrs. Jonathan E. Mitchell  
Mr. and Mrs. Rodney G. Monasmith  
Mr. and Mrs. Keith D. Monda  
Mrs. Ilse Moon  
Dr. and Mrs. John E. Moran, Jr.  
Morgan Stanley Global Impact Funding Trust  
Drs. Joel and Gail Morrison  
Morganroth  
Mr. and Mrs. Michael L. Morris  
Mr. and Mrs. Gerald Morrow  
Mr. Henry A. Mosler  
Mr. and Mrs. David K. Moulthrop  
MSC Foundation Inc.  
Mr. and Mrs. Charles G. Mueller  
Mr. and Mrs. James G. Murphy  
Mr. and Mrs. Richard M. Murray  
Mr. Marc A. Myers  
National Science Foundation  
Ms. Anna M. Nekoranec and Mr. Bengt Niebuhr  
Network for Good  
Mr. and Mrs. Steven R. Newman  
Ms. Nicole C. Nicholas  
Mr. Eric Nichols and Ms. Sheila K. Nichols  
Mrs. Teresa E. Noble  
Mrs. Charmian Noel  
Mr. James W. Norris  
Mr. and Mrs. Kevin A. North  
Mr. and Mrs. James M. Oates



Ms. Dorothy A. O'Brien and Mr. Richard L. Antoine  
Mrs. Fanchon A. Oleson  
Ms. Susanne Olin  
Olin Family Foundation Inc  
Mrs. Barbara Osmon  
Mrs. Janet L. Osterholt  
Mr. and Mrs. Matthew Ostoyich  
Ms. Stephanie Pangia  
Ms. Mary Parker Breshears  
Peterson-Lager Education Fund  
Mr. and Mrs. Arthur C. Pickett  
Ms. Andrea Pilch  
Ms. Gillette A. Piper  
PNC Wealth Management  
Mr. and Mrs. Jon S. Pohl  
Mr. and Mrs. Alan D. Port  
Publix Super Markets Charities, Inc.  
Mr. C. Louis Putallaz  
Mr. and Mrs. Robin Rapaport  
Mrs. Alice W. Rau  
Dr. Paul M. Ressler  
Mr. Steven D. Reynolds  
Mr. and Mrs. Thomas J. Rice III  
Mrs. Linda B. Rice  
Mr. Robert A. Richard and Mr. Thomas G. Devouton  
Ms. India Riggs  
Ms. Sheryl Riley  
Rita B. Lamere Memorial Foundation Trust  
Mr. Dennis Rivero  
Mr. and Mrs. William J. Roberts  
Rev. Judith S. Roberts and Mrs. Sarah R. Barton  
Mr. and Mrs. Michael D. Roberts  
Mrs. Sally Robinson  
Ms. Ursula Robinson  
Ms. Louise D. Roe  
Mr. and Mrs. Burt Romanoff  
Dr. and Mrs. Ira E. Ross  
Mrs. Dorothy D. Roth  
Ms. Marsha C. Roth  
Dr. and Mrs. James E. Ruckle  
Mr. and Mrs. George Ruhl  
Mrs. Donna V. Russell  
Mr. Gary Marple and Ms. Meredith Rutter  
Mr. and Mrs. Alan Sachs  
Mr. and Mrs. Vincente J. Salaverri  
Mr. David J. Sales  
Mr. and Mrs. Joe Sander  
Sarasota Government  
Sarasota Orchid Society, Inc.  
Ms. Jacqueline Schafer  
Mr. John F. Carson III and Ms. Agnes M. Schipper  
Mr. Robert Schmitz  
Ms. Marion N. Schmollinger  
Mrs. Theresa Schoener  
Mr. and Mrs. William Schoener  
Ms. Sharon Schreiber  
Mr. and Mrs. Eugene W. Schunk  
Schwab Fund for Charitable Giving  
Mrs. Barbara Schwallie  
Mr. and Mrs. Rich Scissors  
Mr. and Mrs. Wayne F. Seidl  
Mrs. Charleen Sessions  
Mr. and Mrs. William C. Sexton  
Dr. and Mrs. William E. Woods

Sheboygan Progressive Care Center  
Ms. Irene W. Sherk  
Mr. and Mrs. Jay S. Shivers  
Ms. Debbie L. Shoss and Ms. Libbie A. Sherman  
Dr. Alan M. Shuman  
Mr. and Mrs. Noel D. Siegel  
Mr. and Mrs. Donald W. Simmons  
Dr. and Mrs. Warren Simonds  
Mr. and Mrs. Joey Sites  
Dr. Ronald Slember  
Mr. and Mrs. Hudson Smith  
Mr. and Mrs. John L. Snow II  
Mr. and Mrs. Zuheir Sofia  
Mr. and Mrs. Scott Sommer  
Ms. Lucinda Spaney  
Mrs. Joan Spear  
Mr. Max B. Spiegel  
Ms. Barbara Stallings  
Stanley Smith Horticultural Trust  
Stone Foundation  
Mr. Richard L. Street  
Mr. and Mrs. Wolfgang H. Strehlow  
Ms. Wanda Strickland  
Mr. Joseph A. Strosnik and Ms. Judy Wing  
Ms. Maurie SuDock  
Mr. and Mrs. Hobart K. Swan  
Mrs. Mary L. Swanton and Mr. Michael Kozubek  
Ms. Jessica Swift  
Mr. and Mrs. Peter A. Szabo, Jr.  
Mr. and Mrs. Frederick B. Talbot  
Mr. and Mrs. Jack S. Tate  
Ms. Mary Younglove and Mr. Leonard Tavormina  
Mr. Howard Tevlowitz, Executive Director  
The Benevity Community Impact Fund  
The Doris M. Carter Family Foundation  
The Harry Sudakoff Foundation  
The Jewish Federation of Sarasota-Manatee  
The Signatry  
The Sommer Family Foundation  
Dr. Marie Tiemann  
Mr. and Mrs. Robert V. Toale  
Mr. and Mrs. William D. Tompkins  
Mrs. Heather Tweed  
Mr. Mish Workowski and Mr. Joseph Singer  
United Way of Greater Philadelphia and Southern Jew Jersey  
Dr. and Mrs. Dean F. Uphoff  
Mr. and Mrs. James R. Urell  
Mr. Al Usack and Mr. Ed Kobee  
Mrs. Margarete K. van Antwerpen  
Ms. Linda Vanden Heuvel  
Mr. and Mrs. Peter Vandermark  
Mr. Stanley Vickers  
Ms. Mary F. Vielhauer  
Mr. and Mrs. Michael Vlaming  
Mrs. Ann M. Vozzolo  
Ms. Anne Wagner  
Ms. Margo Waite and Mr. Robert C. Menson  
Mrs. Jenny L. Walder

Dr. Doris Wall and Dr. Fred Gustavson  
Ms. Pauline Wamsler and Mr. David Sales  
Ms. Joyce D. Waterbury and Mr. Ron Conners  
Ms. Joanne J. Webster  
Ms. Karen A. Wehner and Mr. James Jurick  
Ms. Kathy Weil  
Mr. and Mrs. Leigh R. Weiner  
Dr. and Mrs. Norman Weinstein  
Mr. and Mrs. Harold Wellings  
Ms. Iris Wenglin-Bergas  
Mr. and Mrs. Edward T. Wenzke  
Mrs. Kathryn Wheeler and Ms. Philippa Le  
Mr. and Mrs. Frederick White  
Mr. and Mrs. Robert Williams  
Mr. H. A. Williams and Mr. Tom Williams  
Mr. and Mrs. Robert W. Wilson  
Mr. and Mrs. Joel Wilson  
Mr. and Mrs. Wendell Wolka  
Dr. and Mrs. Earl Woods  
Mr. and Mrs. William C. Zoller  
Ms. Gulnar Zolotukhina  
Mr. and Mrs. Milt Zussman

### GIFTS IN KIND

(Recognizing gifts given between October 2018 and January 2019)  
Mr. and Mrs. James A. Armour  
bbj Linen Rental  
Beatriz A. Inc.  
Bullis Bromeliads  
Mrs. Joyce S. Cooper  
Ms. Margaret T. D'Albert  
Dr. Eric Eisenberg  
Mr. Mark Goldin  
Mr. and Mrs. Rod Hollingsworth  
Ms. Jacinta Kavanaugh  
Dr. and Mrs. Carlyle A. Luer  
Ms. Jeane McCarthy  
Mrs. Nathalie W. McCulloch  
Mr. David A. Muolo  
Myakka Aquatics  
Nashville Wraps  
Now That's A Wrap  
Mr. and Mrs. Benjamin Ponte  
Ms. Rosemary A. Reinhardt and Mr. David P. Welle  
Rock on Design  
Mr. Earl Roloff  
Mr. and Mrs. Mark J. Serbin  
Serbin Printing  
Siesta Key Chamber of Commerce  
Ms. Judith E. Sullivan  
Sun Bulb Company, Inc.  
The Observer Group  
University of South Florida - Tampa  
Ms. Emily A. Walsh  
Williams, Parker, Harrison, Dietz & Getzen  
Mr. and Mrs. Michael J. Wilson  
Ms. Karen Stewart and Mr. Doug Zartman

### TRIBUTES

(Recognizing gifts given between October 2018 and January 2019)

### Memorial Bench Contributions

*In Memory of Mr. Michael C. Corbino*  
Mrs. Sharon C. Black  
Mrs. Nancy L. Blackburn  
Pamela Hughes & Co. Inc.  
Mr. and Mrs. Jeffrey B. Sedacca  
Mrs. Margaret P. Wise  
*In Memory of Susan Alison Gregory*  
Mr. and Mrs. James M. Gregory  
Mrs. Barbara G. Pittenger  
Ms. Kathryn Rowan

### Memorial Contributions

Ms. Janice Buchholtz  
Ms. Linda Oxman  
*in memory of Bryan Cromartie*  
Mrs. Irene Cromartie  
*in memory of Mr. Thomas Beurskens*  
Ms. Dana Lampert  
*in memory of Richard and Virginia Crossley*  
Mr. and Mrs. Richard D. Scott  
*in memory of Mrs. Theda B. Donovan*  
Ms. Vivian Davidson  
Mrs. Cristina Fockler  
Mr. and Mrs. Richard J. Grant  
Mr. Steve Hillman  
Mrs. Janelle Lear  
Ms. Janet B. Marticke  
Ms. Martha B. Moeller  
Mr. Robert J. Quinn  
Mr. Tedd Swormstedt  
Ms. Betsy W. Wilson  
*in memory of Andrew Cody Eldredge*  
Mrs. Joyce S. Cooper  
*in memory of Ms. Leanore R. Elliott*  
Mrs. Helena Lindhe Permander  
*in memory of Irene Cromartie*  
Mrs. Irene Cromartie  
*in memory of Dr. Joseph R. Kelly*  
Dr. Sarah E. Kelly  
*in memory of Ms. Eleonor Kodman*  
Mr. and Mrs. Wayne Phillips  
*in memory of Mrs. Melissa B. McDowell*  
Ms. Jane Shandoff  
*in memory of Ms. Patricia L. McGarry*  
Mr. and Mrs. Peter J. Daley  
*in memory of Mrs. Ann T. Peek*  
Mrs. Gay H. Boylston  
Ms. Diana L. Paver  
*in memory of Linda Petrilla*  
Mrs. Sally Lockwood  
*in memory of Mr. Samuel C. Planck*  
Ms. Laura Wood  
*in memory of Mr. Barry A. Rider*

Mr. and Mrs. Michael H. Klein  
*in memory of Ms. Nancy Rosenblum*  
Mrs. Cheryl J. Aiudi-Washenko  
Mr. Jonathan Blalock  
Mrs. Elisa Brennan  
Mrs. Christine Chapman  
Ms. Esther Davis  
Mr. and Mrs. Gary L. Evans  
Ms. Sally B. Johnson  
Mrs. Carol Linden  
Ms. Barbara Lockhart  
Mrs. Tonya MacCoy  
Mrs. Lisa Meline  
Mrs. Jeane Moore  
Ms. and Mr. Margaret M. Murtha  
Mr. and Mrs. Jack B. Needles  
Mr. and Mrs. Wayne M. Osmond  
Mr. and Mrs. Geoff Post  
Dr. Amy Robinson  
Mr. Chris Robinson  
Mrs. Sally Robinson  
Ms. Pam Rogacki  
Mrs. Joan Rogers  
Mr. Peter L. Sawchuk  
Ms. Susan Wilson  
Mr. David L. York  
Ms. Danna Zoltner  
*in memory of Gay Fariel Snyder*  
Ms. Penny Mondani  
*in memory of Denyse A. Stemmermann*  
Mr. and Mrs. Robert Larsen  
Mr. Thomas Meyers  
Mr. and Mrs. Randy Morgan  
Mr. and Mrs. John R. Wittig  
*in memory of Mr. Jim Weiner*  
Mr. and Mrs. Michael H. Klein  
*in memory of Nicola Wex*  
Mr. and Mrs. Marc L. Bazilian  
*in memory of Lyn Ford Youngberg*  
Mrs. Ruth Mendelevitz

### Honorarium Contributions

*in honor of Mrs. Eileen Bradbury*  
Mrs. Sharon Altman  
*in honor of Diane and Vinny Celeste*  
Ms. Elizabeth Conrad  
*in honor of Mrs. Darlene Furst*  
Mr. and Mrs. Charlie Bown  
*in honor of Bruce K. Holst*  
Dr. Paul M. Ressler  
*in honor of Dr. Manny Kaplan*  
Ms. Judith A. Nathenson  
*in honor of Tara and James Knicos*  
Dr. Lisa Knicos  
*in honor of Mr. William Lauderdale*  
Mr. Marshall Alexander  
Ms. Maribel Duarte  
Ms. Naila Maroon  
*in honor of Skip Metheny*  
Judge Caryl Privett  
*in honor of Elizabeth H. Ogletree*

Ms. Carolyn Evans  
*in honor of Jane Paulishak*  
Ms. Elisabeth Carter  
*in honor of Terry and Sam Roth*  
Mr. and Mrs. Marc L. Bazilian  
*in honor of Mrs. Lisa Evans Schanz*  
Mr. and Mrs. David Barendsfeld  
*in honor of Mrs. Margaret P. Wise*  
Arthur S. Karp Family Foundation  
Mr. and Mrs. Charles Barancik  
Mr. and Mrs. Robert G. Bartner  
Mrs. Sharon C. Black  
Mrs. Nancy L. Blackburn  
Mr. and Mrs. James J. Buck  
Mr. Chris Buckley  
Mrs. Ann J. Charters  
Mr. and Mrs. Christopher Cogan  
Mrs. B.J. Creighton  
Mr. and Mrs. Howard R. Curd  
Designing Women Boutique  
Drs. Andrew and Judith Economos  
Mr. Dean H. Eisner  
Ms. Teri A Hansen  
Mr. William T. Harrison Jr.  
Ms. Pamela S. Hughes  
Mr. and Mrs. Larry S. Kabinoff  
Dr. Ronald S. Kendall and Mr. Harold L. Kendall  
Mr. and Mrs. David L. Koffman  
Ms. Cheryl Loeffler  
Mrs. Flora Major  
Mr. and Mrs. Neil Malamud  
Mr. and Mrs. J. R. Matson  
Ms. Anna M. Nekoranec and Mr. Bengt Niebuhr  
Mr. and Mrs. Michael Ogilvie  
Dr. and Mrs. Scott Permesly  
Mrs. Florence L. Roberts  
Mr. and Mrs. Robert Roskamp  
Mrs. Molly A. Schechter  
Mr. and Mrs. Jeffrey B. Sedacca  
Mrs. Marcia Jean Taub and Mr. Peter Swain  
Mr. and Mrs. Thomas E. Trimble  
Mrs. Carol L. Vengroff  
Mr. and Mrs. David Verinder  
Dr. Christine H. Voelker and Dr. Kirk Voelker  
Mr. and Mrs. Steve Walter  
Ms. Pauline Wamsler  
Mr. and Mrs. Arthur M. Wood, Jr.

### Butterfly Garden Walkway Bricks

*In Memoriam*  
*in memory of Bryan Cromartie*  
Mrs. Irene Cromartie  
*in memory of Brewster*  
Ms. J. Allison Archbold and Mr. Hugh J. Bettendorf  
*in memory of Gloria Burdett*  
Mr. and Mrs. Steve Goatley  
*in memory of Irene Cromartie*

Mrs. Irene Cromartie  
*in memory of Priscilla Ireland*  
Ms. Marian Woerner  
*in memory of Bill and Jean Radogna*  
the Estate of Jean Radogna  
*in memory of Gerda Schobben*  
Mr. and Mrs. Paul Schobben  
*in memory of Mark Alan Seese*  
Mr. Kirk Seese  
*in memory of Jack and Vena Williford*  
Ms. Linda Nelson

*In Honor*  
*in honor of Deborah Buchanan*  
Mrs. Reva Scalione  
*in honor of George Reid and Nancy Park-Reid*  
Mr. Daniel Reid  
*in honor of Barbara Shaver and Sara Little*  
Ms. Jeanne Shaver  
*in honor of Gary E. Stevens*  
Mrs. Solange M. Humphreys  
*in honor of the Scott R. Wheaton Foundation*  
Mr. and Mrs. Steven F. Wheaton

### CONTRIBUTING MEMBERS

(Recognizing gifts given between October 2018 and January 2019)

### Stewards of the Earth

Mr. John W. Bean and Mrs. Alexandra Jupin-Bean  
Mr. and Mrs. Thomas J. Degnan  
Mr. and Mrs. Don Friedrich  
Mr. and Mrs. John Gartner  
Mr. and Mrs. Charles H. Hamilton  
Mr. and Mrs. Julian R. Hansen  
Ms. Amy Jo J. Katz  
Dr. Diana Lager  
Mr. and Mrs. Richard H. Nimtz  
Ms. Marjorie L. Pflaum  
Dr. Dennis A. Revicki and Ms. MaryLou Poe  
Mr. and Mrs. John Robenalt  
Jennifer and Robert Rominiecki  
Mr. and Mrs. Michael Scharf  
Mr. and Mrs. Roger E. Thibault  
Mr. and Mrs. James I. Uihlein

### New Benefactor Members

Mr. and Mrs. Scott M. Greer

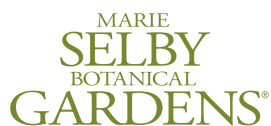
### New Patron Members

Mr. Richard Abdullah  
Mr. Daniel Cook  
Mr. and Mrs. Mitchell Epstein  
Dr. Werner Gundersheimer  
Mrs. Sarah S. Karon  
Mr. Michael Sanchez and Ms. Nancy A. Sanchez

### New Family Members

Mr. and Mrs. Robert Beckenhauer  
Mrs. Ashley Benefield  
Mr. and Mrs. Larry Bennison  
Mr. and Mrs. Mario Bocardo  
Ms. Janette Boone  
Dr. and Mrs. Chris Bretz  
Mr. and Mrs. Lawrence Bushey  
Mrs. Vanessa T. Caberon  
Mrs. Jodi Caldarea  
Mr. and Mrs. Orlando Cano  
Mr. John D. Carvey  
Mr. and Mrs. Steve Cohen  
Mr. and Mrs. Wayne Deming  
Mr. and Mrs. Ross Fitzpatrick  
Mr. and Mrs. Robert Gidel  
Mrs. Stephanie Goodrid Lawson  
Mr. and Mrs. Chad Groves  
Mrs. Kerstin Halsall  
Mr. Michael Herzig and Dr. Rachelle Gandica  
Mr. and Mrs. Greg Hill  
Ms. Wendy Hopkins  
Mr. and Mrs. Dawson Hughes  
Mr. and Mr. Franz J. Hummert  
Mr. and Mrs. Kevin Kallstrom  
Mrs. Maryna Korsykova and Mr. Oleksandr Korsykov  
Mr. and Mrs. Jerry Leete  
Ms. Carey Leichter  
Mr. and Mrs. Justin Leins  
Mr. and Mrs. Rudolph Lucek  
Mr. and Mrs. Stephen Marks  
Dr. Janet Matthews  
Mrs. Kerry McCarthy and Mr. Shaikh Rasool  
Mrs. Megan E. Metcalf  
Dr. Scott A. Middleton and Mrs. Jessica Walsh-Middleton  
Mr. and Mrs. Daniel Molineaux  
Ms. Cheryl Mueller  
Mr. and Mrs. Dane E. Peterson  
Mr. Robert Pozen and Ms. Elizabeth Pozen  
Mr. and Mrs. Christian Sams  
Mr. and Mrs. Daniel Sapuppo  
Mr. and Mrs. Jeff Saunders  
Mr. and Mrs. David Schiffman  
Mrs. Janet Schlanger  
Mr. and Mrs. Michael Seery  
Mr. Sean Sellers  
Ms. Lynette Sorensen  
Mr. and Mrs. John Stevens  
Ms. Jessica Sullivan  
Mr. and Ms. Josh Taylor  
Dr. and Mrs. Lawrence Tsen  
Dr. Juan Carlos Vigil  
Ms. Ruth K. Wade  
Mrs. Megan Wallin-Brockway  
Mr. and Mrs. Tim Wenzel  
Mr. and Mrs. Brian Winzeler  
Mrs. Marianne Woolley  
Ms. Deborah Zacharko  
Mr. and Mrs. John P. Zalick





811 SOUTH PALM AVENUE  
SARASOTA, FLORIDA 34236  
[www.selby.org](http://www.selby.org)

JEAN & ALFRED GOLDSTEIN EXHIBITION SERIES

# GAUGUIN

*Voyage to Paradise*  
AT SELBY GARDENS

THROUGH JUNE 30

#### LEAD SPONSORS



GULF COAST  
COMMUNITY FOUNDATION

#### MAJOR SPONSORS

Gerri Aaron; Maryann and James Armour; Better-Gro; BMO Private Bank; Ed and Betsy Cohen/Arête Foundation; Gold Coast Eagle Distributing; Ernest Kretzmer; Flora Major for the Kutya Major Foundation; Keith and Linda Monda; Northern Trust; So Staged; Total Wine & More; Williams Parker Harrison Dietz & Getzen

#### SUPPORTING SPONSORS

Bank of America; Beverly and Bob Bartner; Doris M. Carter Family Foundation; Community Foundation of Sarasota County; Linnie E. Dalbeck Memorial Foundation; Dart Foundation; Drs. Andrew and Judith Economos; The Jewish Federation of Sarasota-Manatee; Marcy and Michael Klein; Katherine and Frank Martucci; Harry Sudakoff Foundation; The Woman's Exchange

#### ADDITIONAL SPONSOR SUPPORT

Alliance Française de Sarasota; Florida Humanities Council; Teri A Hansen; Maria and Allen Heise; Charlotte and Charles Perret; Jennifer and Robert Rominiecki; State of Florida, Department of State, Division of Cultural Affairs; Florida Council on Arts and Culture



Experience the exhibition and grounds using all five senses with Gauguin Nights. A variety of cultural performances will add to the sensory experience throughout the exhibition. Each evening performance will include full access to the Gardens, hors d'oeuvres, and cocktails. Tickets available at [selby.org](http://selby.org).

**MAY 8** • Florida Studio Theatre performing selections from South Pacific

**JUNE 12** • Sarasota Music Festival – a program of Sarasota Orchestra

#### SPONSORED BY:



SPONSORED BY:  
Flora Major for the Kutya Major Foundation

**MAY 11, JUNE 15**

Calling all kids (and kids at heart)! Enjoy art and nature as part of the Paul Gauguin experience at Selby Gardens. Held monthly through June, Family Saturdays in Paradise will offer artistic children's activities in the great outdoors. During the morning hours from 10 a.m. to noon, kids will have the opportunity to create their own paradise-inspired art with tempera paint, crayons, colored pencils, markers, colored paper, and other materials.

*Free for members and with general admission.*