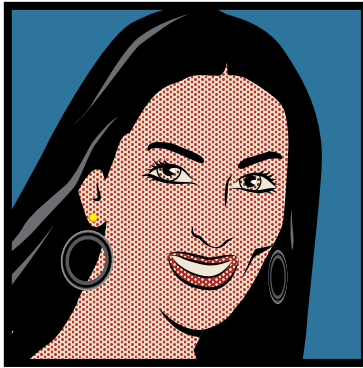
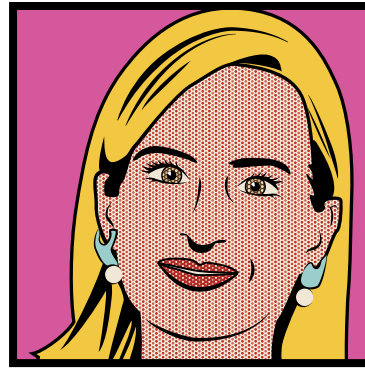


MARIE SELBY  
BOTANICAL  
GARDENS  
DOWNTOWN SARASOTA



## DEAR FRIENDS,

Join us on Friday, April 16, 2021 at 7:00 p.m. for a sensational and safe “Orchid Experience” under the stars throughout the grounds of Selby Gardens’ Downtown Sarasota campus. The Gardens will be illuminated for an **open-air, dazzling light show for this one-night-only Pop Art phenomenon celebrating the exhibition *Roy Lichtenstein: Monet’s Garden Goes Pop!*** Proceeds support Selby Gardens’ community education programs, international research, conservation, and beautiful world-class horticulture displays, while enabling thousands of underserved children and their families to connect with our bayfront sanctuaries. Safety protocols for COVID-19 will be observed.

Sponsorship benefits are enclosed. If you are unable to attend, please consider making a tax-deductible contribution. For more information, please visit [selby.org](https://selby.org), call Selby Gardens’ Events Department at 941-248-3086 or email [orchidexperience@selby.org](mailto:orchidexperience@selby.org).

We hope you will join us for the event of the Sarasota season. Thank you for your consideration and support.

**CHAIRS   LIEBE GAMBLE • KATIE HOLLINGSWORTH  
ASHLEY KOZEL • RETTA WAGNER**

# FRIDAY, APRIL 16, 2021

MARIE SELBY BOTANICAL GARDENS  
DOWNTOWN SARASOTA CAMPUS

1534 Mound Street, Sarasota, FL 34236

7 P.M. COCKTAIL RECEPTION

7:30 P.M. DINNER

POP ART COCKTAIL ATTIRE

## SPONSORSHIP LEVELS

- \$40,000 Lead Sponsorship
- \$20,000 Associate Lead Sponsorship
- \$15,000 Partner Sponsorship
- \$12,500 Associate Partner Sponsorship
- \$10,000 Supporter Sponsorship
- \$6,500 Associate Supporter Sponsorship

## TICKET LEVELS

- \$2,500 Benefactor
- \$500 Individual Ticket (Available after December 15, 2020)

Please contact [orchidexperience@selby.org](mailto:orchidexperience@selby.org) or 941-248-3086  
for more information.

RAIN DATE: SUNDAY, APRIL 18



## \$40,000 LEAD SPONSORSHIP

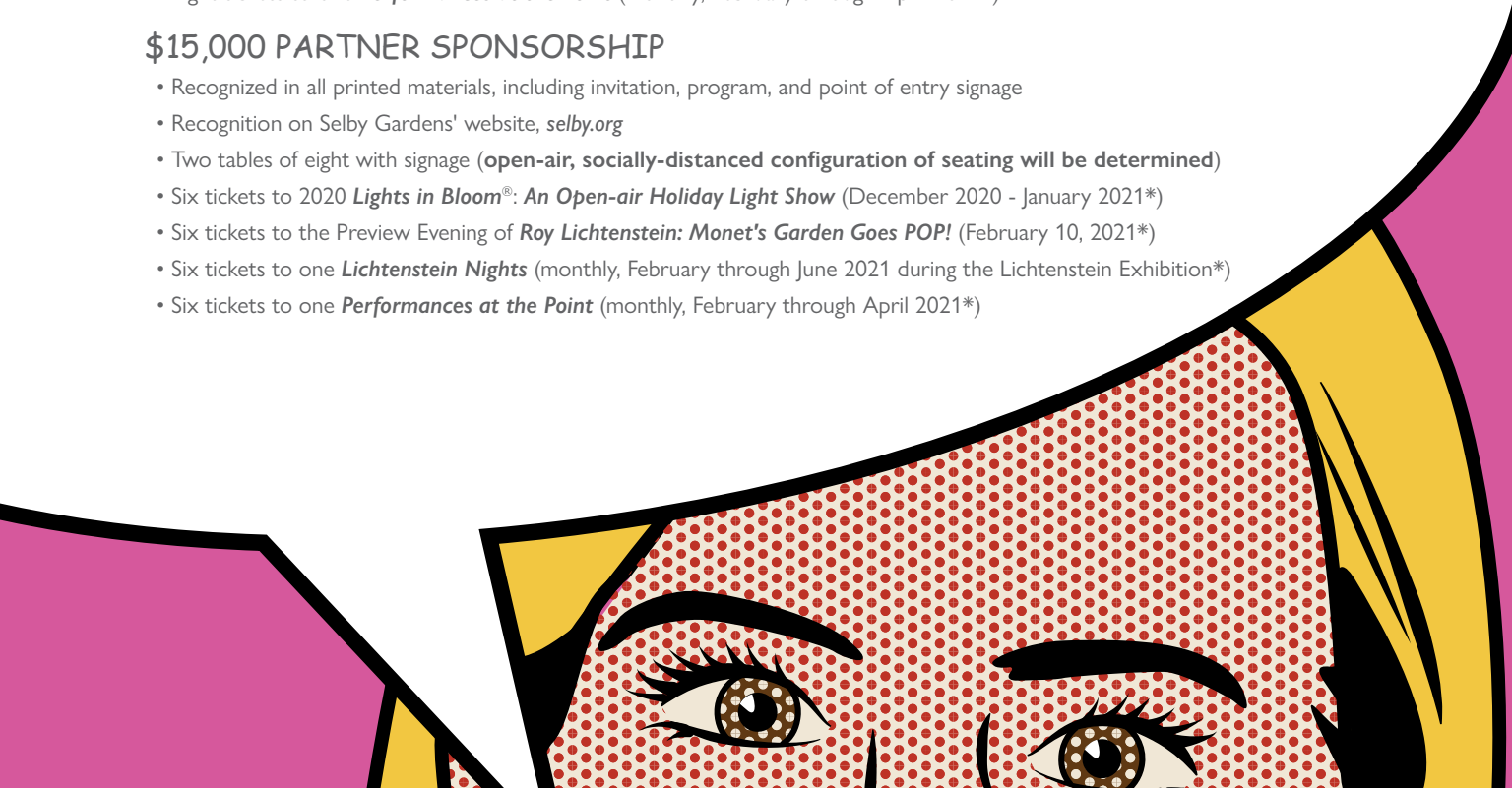
- Recognized as a Lead Sponsor in all print materials, including invitation, program, and point of entry signage
- Opportunity to address guests the evening of the event
- Recognition on Selby Gardens' website, [selby.org](http://selby.org)
- Two tables of ten with signage (**open-air, socially-distanced configuration of seating will be determined**)
- Ten tickets to 2020 *Lights in Bloom*®: *An Open-air Holiday Light Show* (December 2020 - January 2021\*)
- Ten tickets to the Preview Evening of *Roy Lichtenstein: Monet's Garden Goes POP!* (February 10, 2021\*)
- Ten tickets to one *Lichtenstein Nights* (monthly, February through June 2021 during the Lichtenstein Exhibition\*)
- Ten tickets to one *Performances at the Point* (monthly, February through April 2021\*)

## \$20,000 ASSOCIATE LEAD SPONSORSHIP

- Recognized as an Associate Lead Sponsor in all printed materials, including invitation, program, and point of entry signage
- Recognition on Selby Gardens' website, [selby.org](http://selby.org)
- Two tables of eight with signage (**open-air, socially-distanced configuration of seating will be determined**)
- Eight tickets to 2020 *Lights in Bloom*®: *An Open-air Holiday Light Show* (December 2020 - January 2021\*)
- Eight tickets to the Preview Evening of *Roy Lichtenstein: Monet's Garden Goes POP!* (February 10, 2021\*)
- Eight tickets to one *Lichtenstein Nights* (monthly, February through June 2021 during the Lichtenstein Exhibition\*)
- Eight tickets to one *Performances at the Point* (monthly, February through April 2021\*)

## \$15,000 PARTNER SPONSORSHIP

- Recognized in all printed materials, including invitation, program, and point of entry signage
- Recognition on Selby Gardens' website, [selby.org](http://selby.org)
- Two tables of eight with signage (**open-air, socially-distanced configuration of seating will be determined**)
- Six tickets to 2020 *Lights in Bloom*®: *An Open-air Holiday Light Show* (December 2020 - January 2021\*)
- Six tickets to the Preview Evening of *Roy Lichtenstein: Monet's Garden Goes POP!* (February 10, 2021\*)
- Six tickets to one *Lichtenstein Nights* (monthly, February through June 2021 during the Lichtenstein Exhibition\*)
- Six tickets to one *Performances at the Point* (monthly, February through April 2021\*)



## \$12,500 ASSOCIATE PARTNER SPONSORSHIP

- Recognized in all printed materials, including invitation, program, and point of entry signage
- Recognition on Selby Gardens' website, [selby.org](http://selby.org)
- One table of eight with signage (**open-air, socially-distanced configuration of seating will be determined**)
- Six tickets to 2020 *Lights in Bloom*®: *An Open-air Holiday Light Show* (December 2020 - January 2021\*)
- Six tickets to the Preview Evening of *Roy Lichtenstein: Monet's Garden Goes POP!* (February 10, 2021\*)
- Six tickets to one *Lichtenstein Nights* (monthly, February through June 2021 during the Lichtenstein Exhibition\*)
- Six tickets to one *Performances at the Point* (monthly, February through April 2021\*)

## \$10,000 SUPPORTER SPONSORSHIP

- Recognized in all printed materials, including invitation, program, and point of entry signage
- Recognition on Selby Gardens' website, [selby.org](http://selby.org)
- One table of eight with signage (**open-air, socially-distanced configuration of seating will be determined**)
- Four tickets to 2020 *Lights in Bloom*®: *An Open-air Holiday Light Show* (December 2020 - January 2021\*)
- Four tickets to the Preview Evening of *Roy Lichtenstein: Monet's Garden Goes POP!* (February 10, 2021\*)
- Four tickets to one *Lichtenstein Nights* (monthly, February through June 2021 during the Lichtenstein Exhibition\*)
- Four tickets to one *Performances at the Point* (monthly, February through April 2021\*)

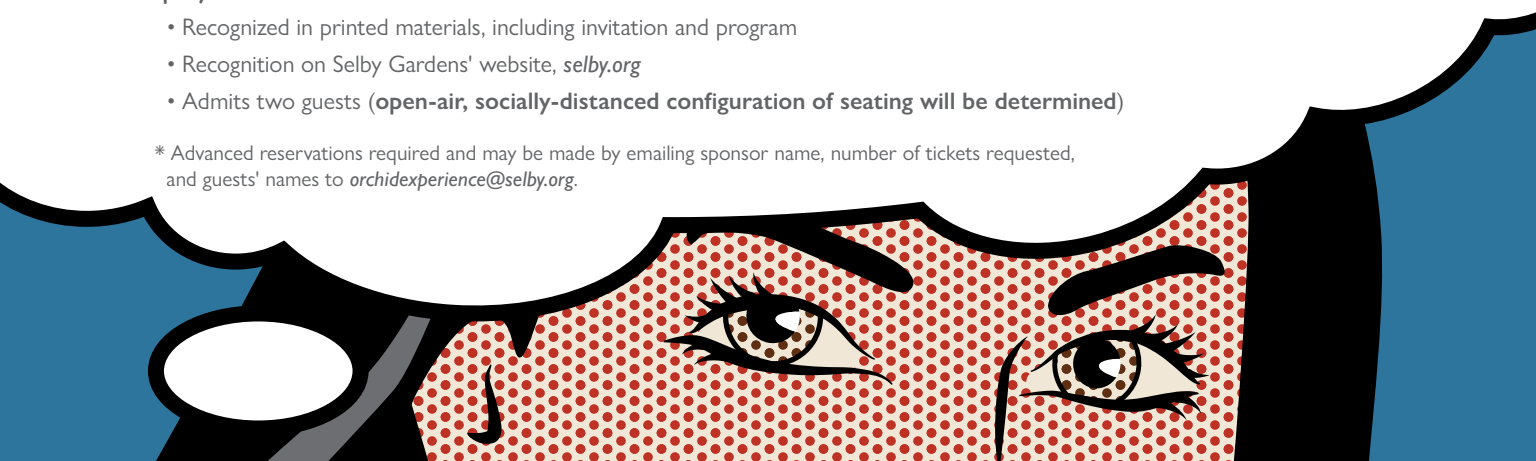
## \$6,500 ASSOCIATE SUPPORTER SPONSORSHIP

- Recognized in all printed materials, including invitation, program, and point of entry signage
- Recognition on Selby Gardens' website, [selby.org](http://selby.org)
- One table of eight with signage (**open-air, socially-distanced configuration of seating will be determined**)
- Two tickets to 2020 *Lights in Bloom*®: *An Open-air Holiday Light Show* (December 2020 - January 2021\*)
- Two tickets to the Preview Evening of *Roy Lichtenstein: Monet's Garden Goes POP!* (February 10, 2021\*)
- Two tickets to one *Lichtenstein Nights* (monthly, February through June 2021 during the Lichtenstein Exhibition\*)
- Two tickets to one *Performances at the Point* (monthly, February through April 2021\*)

## \$2,500 BENEFACTOR

- Recognized in printed materials, including invitation and program
- Recognition on Selby Gardens' website, [selby.org](http://selby.org)
- Admits two guests (**open-air, socially-distanced configuration of seating will be determined**)

\* Advanced reservations required and may be made by emailing sponsor name, number of tickets requested, and guests' names to [orchidexperience@selby.org](mailto:orchidexperience@selby.org).



EXPERIENCE

☐ YES I/we wish to take advantage of the Selby Gardens' 2021 Orchid ~~EX~~ sponsorship opportunity. Enclosed you will find a contribution for the following:

- ☐ \$40,000 Lead Sponsorship   ☐ \$20,000 Associate Lead Sponsorship   ☐ \$15,000 Partner Sponsorship  
☐ \$12,500 Associate Partner Sponsorship   ☐ \$10,000 Supporter Sponsorship   ☐ \$6,500 Associate Supporter Sponsorship  
☐ \$2,500 Benefactor

## PAYMENT METHOD

Name (As I/We wish to be recognized in all printed materials)

Contact Person

Address

Phone

Email

CHECK: I have enclosed Check# \_\_\_\_\_,  
payable to Marie Selby Botanical Gardens

CREDIT CARD: ☐ Visa   ☐ Master Card   ☐ Amex   ☐ Discover

Name on card

Card #

Exp. date

CSC#

Signature

Date

TO PAY FOR THE CHARITABLE PORTION OF YOUR SPONSORSHIP USING A DONOR ADVISED FUND, please complete the information below as well as method of payment for noncharitable portion above.

NAME OF INSTITUTION MAKING CHARITABLE GRANT: \_\_\_\_\_

☐ Please charge my credit card for non-charitable sponsorship amount.   ☐ I have enclosed a check for non-charitable sponsorship amount.

SPONSORSHIP LEVEL	CHARITABLE AMOUNT	NON-CHARITABLE PORTION
\$40,000 Lead	\$35,750	\$4,250
\$20,000 Associate Lead	\$16,600	\$3,400
\$15,000 Partner	\$11,650	\$3,350
\$12,500 Associate Partner	\$10,750	\$1,750
\$10,000 Supporter	\$8,300	\$1,700
\$6,500 Associate Supporter	\$4,850	\$1,650
\$2,500 Benefactor	\$2,100	\$400

PLEASE MAIL PAYMENT TO: Marie Selby Botanical Gardens  
Attn: Orchid Experience 2021  
1534 Mound Street, Sarasota, FL 34236

Marie Selby Botanical Gardens is designated tax-exempt from Federal income tax under Code Section 501(c)(3) of the Internal Revenue Service Code. Your donation is tax deductible for the amount over and above the goods and services provided in conjunction with your sponsorship. If you have questions regarding charitable deductibility, please email [orchidexperience@selby.org](mailto:orchidexperience@selby.org). Please retain a copy of this letter for your tax records.

